

1 Hole Lug



FEATURES

Provides an efficient bolting surface for grounding and power applications

Electrolytic grade copper

For use with nVent ERICO Cadweld type LA connections only

SPECIFICATIONS

Material: Copper

Type: NEMA®

Finish: Tinned

Table 1/1

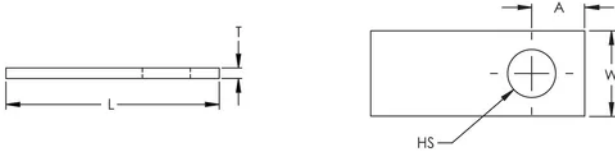
Catalog Number	Length (L)	Width (W)	Thickness (T)	A	Hole Size (HS)	Equivalent Conductor Size
B101AA	1 1/4"	1/2"	0.06"	0.31"	0.28"	39.46kcmil
B101CE	1.94"	1"	0.12"	1/2"	0.44"	159.12kcmil
B101CE002	1.94"	1"	0.12"	3/4"	0.69"	159.12kcmil
B101QQ	1.94"	1"	0.12"	0.47"	0.41"	159kcmil
B101DE	1.94"	1"	0.19"	0.56"	0.56"	238.69kcmil

CatalogNumber	Length (L)	Width (W)	Thickness (T)	A	Hole Size (HS)	Equivalent Conductor Size
B101EE	2.19"	1"	1/4"	0.62"	0.56"	318.25kcmil
B101EG	2 1/2"	1 1/2"	1/4"	3/4"	0.69"	477.38kcmil
PBB101EG	2 1/2"	1 1/2"	1/4"	3/4"	0.69"	477.38kcmil
B101GG	2 3/4"	1 1/2"	0.38"	3/4"	0.69"	716.06kcmil
B101GH	3.38"	2"	0.38"	1"	0.69"	954.75kcmil
PBB101GH	3.38"	2"	0.38"	1"	0.69"	954.75kcmil
B101JH	3.38"	2"	1/2"	1"	0.56"	1273kcmil
B103JH001	3"	2"	1/2"	1 1/4"	0.69"	1273kcmil
B103JH010	4"	2"	1/2"	1.38"	0.62"	1273kcmil

ADDITIONAL PRODUCT DETAILS

For sizes not listed, contact us.

DIAGRAMS



WARNING

nVent products shall be installed and used only as indicated in nVent's product instruction sheets and training materials. Instruction sheets are available at www.nvent.com and from your nVent customer service representative. Improper installation, misuse, misapplication or other failure to completely follow nVent's instructions and warnings may cause product malfunction, property damage, serious bodily injury and death and/or void your warranty.

North America

+1.800.753.9221

Option 1 – Customer Care

Option 2 – Technical

Support

Europe

Netherlands:

+31 800-0200135

France:

+33 800 901 793

Europe

Germany:

800 1890272

Other Countries:

+31 13 5835404

APAC

Shanghai:

+ 86 21 2412 1618/19

Sydney:

+61 2 9751 8500



Our powerful portfolio of brands:

CADDY

ERICO

HOFFMAN

ILSCO

SCHROFF

TRACHTE