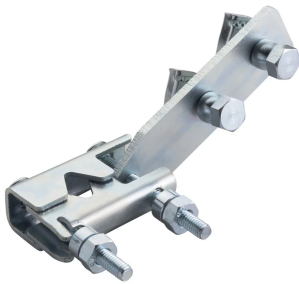


Trapeze Sway Brace, Strut

Data Solutions



CERTIFICATIONS



FEATURES

Seismically braces trapeze hangers

Retrofit ability allows for the brace to be installed after the trapeze assembly is installed

One wrench size fits all required hardware, eliminating the need to change tools

Shear-off head helps ensure correct torque and simplifies inspection

FM® Specification Tested

SPECIFICATIONS

Table 1/2

Catalog Number	Material	Finish	Rod Size (RS)	Width (W)	Thickness (T)	A
CSBR2	Steel	Electrogalvanized	0.375in, 0.5in, 0.625in, 0.75in	3.2in	0.14in	5.25in

Table 2/2

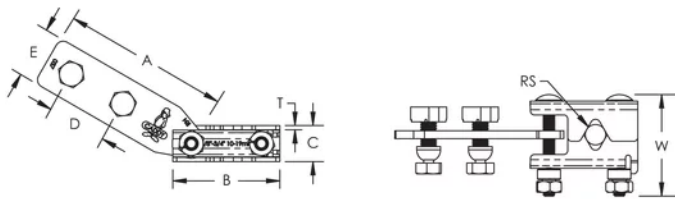
Catalog Number	B	C	D	E
CSBR2	3.4in	1.13in	1.88in	1.62in

ADDITIONAL PRODUCT DETAILS

Cut length for strut member is +/- 1" (25 mm) of measured length.

Part Number	Brace Member	FM Loads			
		Horizontal Capacity per Installation Angle from Vertical			
		30° - 44°	45° - 59°	60° - 74°	75° - 90°
CSBR2	12 GA Strut Channel	1,031 lb	1,812 lb	2,000 lb	2,231 lb

DIAGRAMS



WARNING

nVent products shall be installed and used only as indicated in nVent's product instruction sheets and training materials. Instruction sheets are available at www.nvent.com and from your nVent customer service representative. Improper installation, misuse, misapplication or other failure to completely follow nVent's instructions and warnings may cause product malfunction, property damage, serious bodily injury and death and/or void your warranty.



Our powerful portfolio of brands:

CADDY ERICO HOFFMAN ILSCO SCHROFF TRACHTE