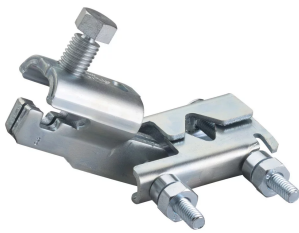


# Trapeze Sway Brace, Pipe

## Data Solutions



### CERTIFICATIONS



### FEATURES

Seismically braces trapeze hangers

Retrofit ability allows for the brace to be installed after the trapeze assembly is installed

Works with brace members of schedule 40 pipe, EMT conduit, and rigid conduit

One wrench size fits all required hardware, eliminating the need to change tools

Shear-off head helps ensure correct torque and simplifies inspection

FM Specification Tested with the following brace members: 1-2 in Sch40 Pipe, 1 in EMT Conduit, and 1 in Rigid Conduit

### SPECIFICATIONS

Table 1/2

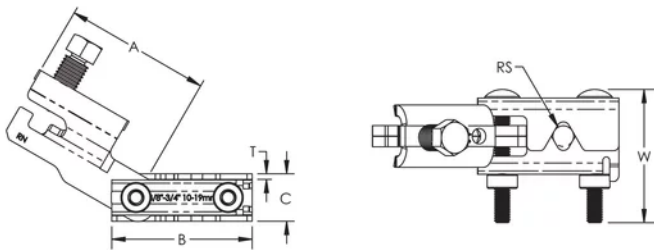
Catalog Number	Material	Finish	Rod Size (RS)	Width (W)	Thickness (T)	A
CSBR1	Steel	Electrogalvanized	0.375in, 0.5in, 0.625in, 0.75in	3.2in	0.14in	3.5in

Table 2/2

Catalog Number	B	C
CSBR1	3.4in	1.14in

FM Specification Testing					
Part Number	Brace Member	Horizontal Capacity per Installation Angle from Vertical			
		30° - 44°	45° - 59°	60° - 74°	75° - 90°
CSBR1	1", 1-1/4", 1-1/2" or 2" NPS Sch 40	755 lb	1,109 lb	1,681 lb	1,875 lb
	1" EMT Conduit Steel as defined in ANSI C80.3	623 lb	876 lb	1,055 lb	1,176 lb
	1" Rigid Metallic Conduit Steel as defined in ANSI C80.1	623 lb	876 lb	1,055 lb	1,176 lb

## DIAGRAMS



## WARNING

nVent products shall be installed and used only as indicated in nVent's product instruction sheets and training materials. Instruction sheets are available at [www.nvent.com](http://www.nvent.com) and from your nVent customer service representative. Improper installation, misuse, misapplication or other failure to completely follow nVent's instructions and warnings may cause product malfunction, property damage, serious bodily injury and death and/or void your warranty.



Our powerful portfolio of brands:

**CADDY   ERICO   HOFFMAN   ILSCO   SCHROFF   TRACHTE**