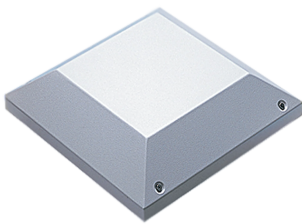


# ProLine High-Performance Pagoda Exhaust Vent

## Data Solutions



Vents fit on standard ProLine top with vent cutout or can be field-installed on any ProLine solid top. The Pagoda Vent features an integral centrifugal blower mounted in a housing that includes a drip-proof removable hood, wire mesh finger guard, perimeter gasket and terminal block. Electromagnetic-compatible (EMC) Pagoda Vents include a conductive screen, conductive gasket, line filter and 6-ft. power cord with stripped leads.

### FEATURES

Integral centrifugal blower mounted in a protective housing

Can be installed on any ProLine or ProLine G2 solid top

Drip-protected, raised cover is removable from the inside of the enclosure

Housing includes a drip-proof removable hood, wire mesh finger guard and perimeter gasket

Lead wire or power cord options

115V or 230V versions

Rated UL Type 1; installing this component on an enclosure brings the enclosure rating to UL Type 1

Installation hardware included

### SPECIFICATIONS

Table 1/2

Catalog Number	Article Number	Material	Voltage AC	Full Load	Color	Color Code
PPTHP1C	11096	Mild Steel	115V	1.7A	Light Gray	RAL 7035

Table 2/2

Catalog Number	Article Number	Finish	Thickness
----------------	----------------	--------	-----------

PPTHP1C	11096	Powder Coated	16ga
---------	-------	---------------	------

**WARNING**

nVent products shall be installed and used only as indicated in nVent's product instruction sheets and training materials. Instruction sheets are available at [www.nvent.com](http://www.nvent.com) and from your nVent customer service representative. Improper installation, misuse, misapplication or other failure to completely follow nVent's instructions and warnings may cause product malfunction, property damage, serious bodily injury and death and/or void your warranty.



Our powerful portfolio of brands:

CADDY   ERICO   HOFFMAN   ILSCO   SCHROFF   TRACHTE