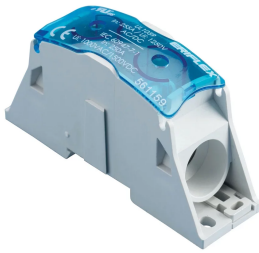


Power Block

Data Solutions



nVent ERIFLEX Power Blocks are the main DIN mounted output/input devices for connection between primary and secondary switchboard, or main input/output connection for machine or industrial equipment (such as inverter, air conditioning machines, etc.). The high short circuit rated large cross section blocks offer time savings and reliability in every panel configuration. The complete Power Blocks range offers multiple connection types with up to four cables, nVent ERIFLEX Flexibar Advanced, or IBSB Advanced power braids.

CERTIFICATIONS



FEATURES

Can be connected with round cross section cable or flat connection system like nVent ERIFLEX Flexibar Advanced or IBSB Advanced Insulated Braided Conductor

Compact power block with high short circuit current rating

Tinned copper or aluminum block allows for copper or aluminum conductor direct connections, or using ferrule

Screw retaining cover is hinged and removable

Design allows for visual inspection of conductor and confirmation of connection

Modular snap-together blocks for building multi-pole power blocks

Easily clips onto DIN rail or mounts to panel with screws

Voltage detection and measurement connection

95% fill ratio

RoHS compliant

Conforms to EN 45545 obtaining an HL3 classification for chapter R23 and HL2 classification for chapter R22

SPECIFICATIONS

Finish: Tinned

Table 1/2

Catalog Number	Article Number	Type	Typical Application Current Rating, UL	Material	Line Side Max Conductor Size, UL	Load Side Max Conductor Size, UL
SB125AL	561161	Cable-Cable	150A	Aluminum, Thermoplastic	1/0 AWG	1/0 AWG
SB80	561150	Cable-Cable	85A	Copper, Thermoplastic	#4	#4
SB80AL	561160	Cable-Cable	85A	Aluminum, Thermoplastic	#4	#4
SB125	561158	Cable-Cable	150A	Copper, Thermoplastic	1/0 AWG	1/0 AWG
SB160AL	561162	Cable-Cable	200A	Aluminum, Thermoplastic	3/0 AWG	3/0 AWG
SB250AL	561163	Cable-Cable	255A	Aluminum, Thermoplastic	250 kcmil	250 kcmil
SB160	561151	Cable-Cable	200A	Copper, Thermoplastic	3/0 AWG	3/0 AWG
SB400AL	561164	Cable-Cable	335A	Aluminum, Thermoplastic	400 kcmil	400 kcmil
SBF250	561171	Flexibar-Cable	255A	Copper, Thermoplastic	70 mm ²	250 kcmil
SBF400AL	561165	Flexibar-Cable	335A	Aluminum, Thermoplastic	100 mm ²	400 kcmil
SB250	561159	Cable-Cable	255A	Copper, Thermoplastic	250 kcmil	250 kcmil
SB2C400AL	561166	Cable-2 Cables	335A	Aluminum, Thermoplastic	400 kcmil	(2) 250 kcmil
SBF2C400AL	561167	Flexibar-2 Cables	335A	Aluminum, Thermoplastic	100 mm ²	(2) 250 kcmil
SB2C250	561170	Cable-2 Cables	255A	Copper, Thermoplastic	250 kcmil	(2) 250 kcmil

CatalogNumber	Article Number	Type	Typical Application Current Rating, UL	Material	Line Side Max ConductorSize, UL	Load Side Max ConductorSize, UL
SBF2C250	561172	Flexibar-2 Cables	255A	Copper, Thermoplastic	70 mm ²	(2) 250 kcmil
SB400	561152	Cable-Cable	335A	Copper, Thermoplastic	400 kcmil	400 kcmil
SBF400	561153	Flexibar-Cable	335A	Copper, Thermoplastic	100 mm ²	400 kcmil
SB630AL	561168	Cable-Cable	545A	Aluminum, Thermoplastic	1,000 kcmil	1,000 kcmil
SBF630AL	561169	Flexibar-Cable	545A	Aluminum, Thermoplastic	240 mm ²	1,000 kcmil
SBF2C630AL	561173	Flexibar-2 Cables	760A	Aluminum, Thermoplastic	240 mm ²	500 kcmil
SB2C2C1000AL	561175	2 Cables-2 Cables	840A	Aluminum, Thermoplastic	(2) 600 kcmil	(2) 600 kcmil
SB2C400	561154	Cable-2 Cables	335A	Copper, Thermoplastic	400 kcmil	(2) 250 kcmil
SB2C1000AL	561174	Cable-2 Cables	545A	Aluminum, Thermoplastic	1,000 kcmil	(2) 600 kcmil
SBF2C400	561155	Flexibar-2 Cables	335A	Copper, Thermoplastic	100 mm ²	(2) 250 kcmil
SBF3C1000AL	561176	Flexibar-3 Cables	1260A	Aluminum, Thermoplastic	500 mm ²	(3) 600 kcmil
SB630	561156	Cable-Cable	545A	Copper, Thermoplastic	1,000 kcmil	1,000 kcmil
SBF4C1600AL	561177	Flexibar-4 Cables	1680A	Aluminum, Thermoplastic	800 mm ²	(4) 600 kcmil
SBF630	561157	Flexibar-Cable	545A	Copper, Thermoplastic	240 mm ²	1,000 kcmil

Table 2/2

Catalog Number	Article Number	Short Term Withstand Current (Icw) 1s	Certifications
SB125AL	561161	6kA	UR, RoHS, CE, ERIFLEX SB, cUR
SB80	561150	3kA	RoHS, UR, CE, ERIFLEX SB

Catalog Number	Article Number	Short Term Withstand Current (Icw) 1s	Certifications
SB80AL	561160	3kA	RoHS, UR, cUR, CE, ERIFLEX SB
SB125	561158	6kA	CE, ERIFLEX SB, UR, RoHS
SB160AL	561162	14.4kA	UR, cUR, RoHS, CE, ERIFLEX SB
SB250AL	561163	14.4kA	cUR, UR, RoHS, CE, ERIFLEX SB
SB160	561151	14.4kA	RoHS, CE, ERIFLEX SB, UR
SB400AL	561164	28.8kA	UR, CE, ERIFLEX SB, cUR, RoHS
SBF250	561171	14.4kA	UL, UR, cUL, QPQS7.E497276, CE, ERIFLEX SB, RoHS
SBF400AL	561165	28.8kA	RoHS, CE, ERIFLEX SB, UR, cUR
SB250	561159	14.4kA	UR, RoHS, CE, ERIFLEX SB
SB2C400AL	561166	28.8kA	cUR, RoHS, UR, CE, ERIFLEX SB
SBF2C400AL	561167	28.8kA	cUR, UR, RoHS, CE, ERIFLEX SB
SB2C250	561170	14.4kA	RoHS, CE, ERIFLEX SB, UL, cUL, QPQS7.E497276
SBF2C250	561172	14.4kA	RoHS, UL, cUL, QPQS7.E497276, CE, ERIFLEX SB
SB400	561152	28.8kA	RoHS, UR, CE, ERIFLEX SB
SBF400	561153	28.8kA	RoHS, CE, ERIFLEX SB, UR
SB630AL	561168	60kA	RoHS, UR, CE, ERIFLEX SB, cUR
SBF630AL	561169	60kA	CE, ERIFLEX SB, cUR, UR, RoHS
SBF2C630AL	561173	60kA	UL, cUL, QPQS7.E497276, RoHS, CE, ERIFLEX SB

Catalog Number	Article Number	Short Term Withstand Current (Icw) 1s	Certifications
SB2C2C1000AL	561175	72kA	UL, cUL, QPQS7.E497276, RoHS, CE, ERIFLEX SB
SB2C400	561154	28.8kA	RoHS, UR, CE, ERIFLEX SB
SB2C1000AL	561174	72kA	UL, cUL, QPQS7.E497276, RoHS, CE, ERIFLEX SB
SBF2C400	561155	28.8kA	RoHS, CE, ERIFLEX SB, UR
SBF3C1000AL	561176	72kA	CE, ERIFLEX SB, UL, cUL, QPQS7.E497276, RoHS
SB630	561156	60kA	RoHS, UR, CE, ERIFLEX SB
SBF4C1600AL	561177	96kA	UL, cUL, QPQS7.E497276, RoHS, CE, ERIFLEX SB
SBF630	561157	60kA	RoHS, CE, ERIFLEX SB, UR

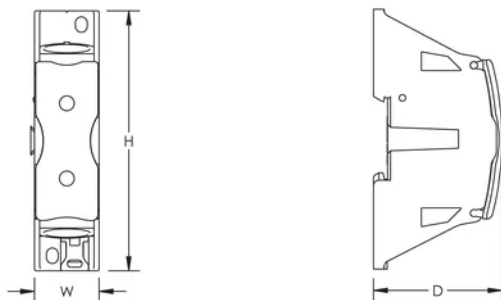
ADDITIONAL PRODUCT DETAILS

SBF250 is UL® 1953 Listed when used with SB250SPCR. Max Working Voltage for UL 1953 applications is 1250 VAC/DC.

Blue protection cover is less than 7% of the overall product weight.

Design Guideline for Distribution Blocks, Power Blocks and Power Terminals										
Derating according to Ambient* Temperature (°F) to maintain working temperature of 185°F										
Ambient Temperature (°F)	86°	95°	104°	113°	122°	131°	140°	149°	158°	167°
Derating Coefficient (d)	1	1	1	0.94	0.88	0.82	0.75	0.67	0.58	0.47
*environment around the terminal blocks inside the enclosure										

DIAGRAMS



WARNING

nVent products shall be installed and used only as indicated in nVent's product instruction sheets and training materials. Instruction sheets are available at www.nvent.com and from your nVent customer service representative. Improper installation, misuse, misapplication or other failure to completely follow nVent's instructions and warnings may cause product malfunction, property damage, serious bodily injury and death and/or void your warranty.



Our powerful portfolio of brands:

CADDY ERICO HOFFMAN ILSCO SCHROFF TRACHTE