

# nVent ERIFLEX Flexbus HCBC Plate with PE Connection

## Data Solutions



### CERTIFICATIONS



### FEATURES

Rigid tinned copper part provides strong electrical contact to maintain braid expansion during compression

HCBC Plate allows Flexbus Conductor insulation to overlap the connection palm

HCBC Plate with PE connection allows conductor to be added to interconnect neutral and ground/earth

Tinned copper allows for copper or aluminum conductor connections

Installs quickly and easily

RoHS compliant

### SPECIFICATIONS

**Material:** Copper

**Finish:** Tinned

Table 1/2

Catalog Number	Article Number	A	B	C	D	E
FLEXPLATE100 PE	508183	4.53in	3.94in	1.77in	2.01in	2.76in
FLEXPLATE50P E	508182	2.56in	3.94in	1.77in	1.61in	2.76in

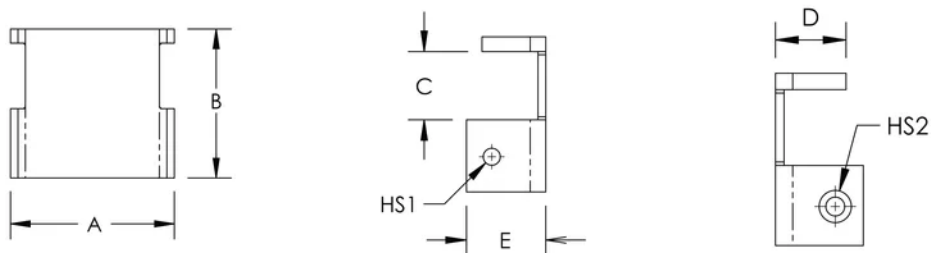
Table 2/2

Catalog Number	Article Number	Hole Size 1 (HS1)	Hole Size 2 (HS2)	Thickness (T)	Conductor Size	Unit Weight
FLEXPLATE100 PE	508183	0.49in	0.73in	0.2in	960 mm <sup>2</sup> , 1280 mm <sup>2</sup> , 1810 mm <sup>2</sup>	1.57lb
FLEXPLATE50P E	508182	0.41in	0.57in	0.2in	220 mm <sup>2</sup> , 360 mm <sup>2</sup> , 545 mm <sup>2</sup> , 640 mm <sup>2</sup>	1.08lb

## ADDITIONAL PRODUCT DETAILS

It is mandatory to use the HCBC Clamp associated with the HCBC Plate for proper Flexbus Conductor connection.

## DIAGRAMS



## WARNING

nVent products shall be installed and used only as indicated in nVent's product instruction sheets and training materials. Instruction sheets are available at [www.nvent.com](http://www.nvent.com) and from your nVent customer service representative. Improper installation, misuse, misapplication or other failure to completely follow nVent's instructions and warnings may cause product malfunction, property damage, serious bodily injury and death and/or void your warranty.



Our powerful portfolio of brands:

**CADDY   ERICO   HOFFMAN   ILSCO   SCHROFF   TRACHTE**