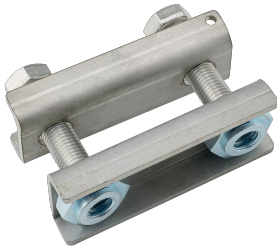


nVent ERIFLEX Flexbus HCBC Clamp

Data Solutions



CERTIFICATIONS



FEATURES

Rigid design assures even contact pressure

Installs quickly and easily

Ideal for on-site modifications

Made with non-magnetic material stainless steel for high-current connections to prevent the formation of magnetic fields

Contains crimped self-locking nut for vibration resistance and easy installation

No drilling needed to fix the Flexbus Conductor on the transformer/power supply palm

Includes voltage detection connecting point

RoHS compliant

SPECIFICATIONS

Material: Stainless Steel 304 (EN 1.4301)

Table 1/2

Catalog Number	Article Number	A	B	C	D	Thickness (T)
FLEXCLAMP100	508192	3.94in	6.3in	0.79in	1.69in	0.16in
FLEXCLAMP120	508193	4.72in	7.09in	0.79in	1.69in	0.16in
FLEXCLAMP160	508194	6.3in	8.66in	0.79in	1.69in	0.16in
FLEXCLAMP63	508190	2.48in	4.84in	0.79in	1.69in	0.16in
FLEXCLAMP80	508191	3.15in	5.51in	0.79in	1.69in	0.16in

Table 2/2

Catalog Number	Article Number	Hole Size (HS)	Torque (TQ)	Unit Weight	Conductor Width
FLEXCLAMP100	508192	0.22in	73.76ft·lbf	2.03lb	3.54 – 3.94in
FLEXCLAMP120	508193	0.22in	73.76ft·lbf	2.2lb	4.33 – 4.72in
FLEXCLAMP160	508194	0.22in	73.76ft·lbf	2.91lb	5.12 – 6.3in
FLEXCLAMP63	508190	0.22in	73.76ft·lbf	1.17lb	1.18 – 2.48in
FLEXCLAMP80	508191	0.22in	73.76ft·lbf	1.85lb	2.76 – 3.15in

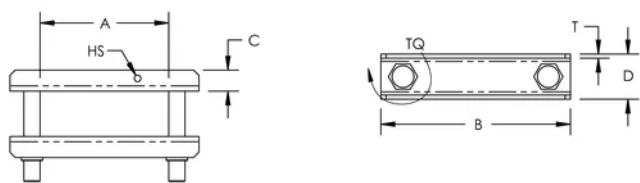
ADDITIONAL PRODUCT DETAILS

It is mandatory to use the HCBC Clamp associated with the HCBC Plate for proper Flexbus Conductor connection.

The minimum clearance distance is 14mm according to IEC 61439-1 with air pollution degree 3. If this distance cannot be respected, insulation material should be added between the metallic LV cover and the HCBC clamp. Flexbus IP2x Boots is also a solution.

If the Flexbus Conductors have a horizontal entry, an extender needs to be added between the power supply palm and HCBC Clamp and Plate.

DIAGRAMS



WARNING

nVent products shall be installed and used only as indicated in nVent's product instruction sheets and training materials. Instruction sheets are available at www.nvent.com and from your nVent customer service representative. Improper installation, misuse, misapplication or other failure to completely follow nVent's instructions and warnings may cause product malfunction, property damage, serious bodily injury and death and/or void your warranty.



Our powerful portfolio of brands:

CADDY ERICO HOFFMAN ILSCO SCHROFF TRACHTE