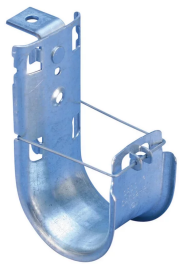
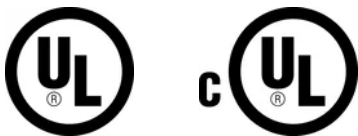


# nVent CADDY Cat HP J-Hook with Angle Bracket

## Data Solutions



### CERTIFICATIONS



### FEATURES

Ideal for attaching to concrete, steel or wood surfaces

Provides optimal support for high-performance data cable, up to and including Cat 5e, Cat 6, Cat 6A, Cat 7 and fibre optic

Provides superior fill capacity and load rating over most other non-continuous cable support alternatives

Rounded edges on J-Hooks provide proper bend radius support for high performance data cables

Cost effective alternative to expensive cable tray

Complies with EN 50174-2

Meets ISO®/IEC 14763-2, ANSI®/TIA 568 and ANSI®/TIA 569

### SPECIFICATIONS

**Finish:** Pregalvanized

**Material:** Steel

Table 1/2

Catalog Number	Diameter (Ø)	Area	Cable Capacity, Cat 5e	Cable Capacity, Cat 6	Cable Capacity, Cat 6A	Hole Size (HS)
CAT16HPAB	1in	1.07in <sup>2</sup>	20	15	10	0.25in
CAT21HPAB	1.3125in	2.29in <sup>2</sup>	50	40	25	0.25in
CAT32HPAB	2in	3.97in <sup>2</sup>	90	60	35	0.25in
CAT48HPAB	3in	9.26in <sup>2</sup>	200	150	80	0.25in
CAT64HPAB	4in	15.48in <sup>2</sup>	330	220	140	0.25in

Table 2/2

Catalog Number	Static Load (F)
CAT16HPAB	60lb
CAT21HPAB	60lb
CAT32HPAB	60lb
CAT48HPAB	60lb
CAT64HPAB	60lb

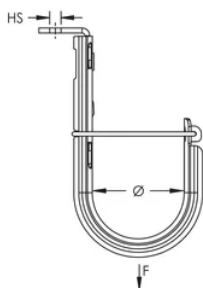
## ADDITIONAL PRODUCT DETAILS

Non-continuous supports may not exceed spacing of 5' (1.5 m) per TIA 569-C.9.7 and EN 50174-2.

Cable capacity is calculated based on a 70% fill rate.

## DIAGRAMS

---



## WARNING

---

nVent products shall be installed and used only as indicated in nVent's product instruction sheets and training materials. Instruction sheets are available at [www.nvent.com](http://www.nvent.com) and from your nVent customer service representative. Improper installation, misuse, misapplication or other failure to completely follow nVent's instructions and warnings may cause product malfunction, property damage, serious bodily injury and death and/or void your warranty.



Our powerful portfolio of brands:

**CADDY   ERICO   HOFFMAN   ILSCO   SCHROFF   TRACHTE**