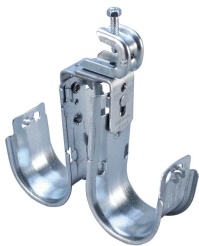


# nVent CADDY Cat HP Double J-Hook with BC200 Beam Clamp, Swivel

## Data Solutions



### FEATURES

Low-profile configuration providing double J-Hook capacity

Easy installation to beam flanges

Rotates 360 degrees to support various directional runs of cable

Provides optimal support for high-performance data cable, up to and including Cat 5e, Cat 6, Cat 6A, Cat 7 and fibre optic

Provides superior fill capacity and load rating over most other non-continuous cable support alternatives

Rounded edges on J-Hooks provide proper bend radius support for high performance data cables

Cost effective alternative to expensive cable tray

Complies with EN 50174-2

Meets ISO®/IEC 14763-2, ANSI®/TIA 568 and ANSI®/TIA 569

### SPECIFICATIONS

**Finish:** Pregalvanized; Electrogalvanized

**Material:** Steel

Table 1/1

Catalog Number	Diameter (Ø)	Flange Thickness (FT)	Width (W)	A	Static Load (F)
----------------	--------------	-----------------------	-----------	---	-----------------

CAT21HPD1BC2	1.3125in	0.5in max	5.125in	4.875in	100lb
CAT32HPD1BC2	2in	0.5in max	6.5in	5.125in	100lb
CAT48HPD1BC2	3in	0.5in max	8.5in	6.75in	100lb
CAT64HPD1BC2	4in	0.5in max	10.5in	7.75in	100lb

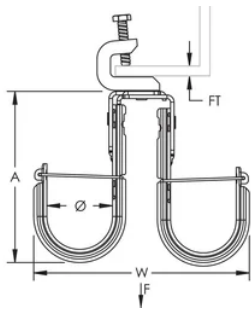
## ADDITIONAL PRODUCT DETAILS

Static load limit of each J-Hook is 60 lb (270 N).

Setscrew must be tightened and torqued onto the sloped side of the I-beam.

Non-continuous supports may not exceed spacing of 5' (1.5 m) per TIA 569-C.9.7 and EN 50174-2.

## DIAGRAMS



## WARNING

nVent products shall be installed and used only as indicated in nVent's product instruction sheets and training materials. Instruction sheets are available at [www.nvent.com](http://www.nvent.com) and from your nVent customer service representative. Improper installation, misuse, misapplication or other failure to completely follow nVent's instructions and warnings may cause product malfunction, property damage, serious bodily injury and death and/or void your warranty.



Our powerful portfolio of brands:

**CADDY   ERICO   HOFFMAN   ILSCO   SCHROFF   TRACHTE**