

IBS/IBSB Advanced Insulated Braided Conductor, Halogen Free

Data Solutions

IBS/IBSB Advanced Insulated Braided Conductor, Halogen Free is the ideal ready-to-install flexible wire replacement solution that is specifically designed for connections to all molded case circuit breakers, including the most compact breakers on the market. IBS/IBSB Advanced connects to the front access terminals of the breakers without any additional accessories, such as angular connectors, spreaders, ring terminal connectors or extenders. IBS/IBSB Advanced is available in cross sections of 25 to 240 mm² (49.34 to 273.65 kcmil), lengths from 230 to 1,030 mm (9.06" to 40.55"), and 80 to 700 A.

Manufactured in an ISO 9001 2015 certified automated facility, IBS/IBSB Advanced is formed by weaving high-quality electrolytic copper wire to form a durable low voltage connector with maximum flexibility which allows for more compact power connections to circuit breakers. The IBS/IBSB Advanced allows users to reduce the total size and weight of the installation, improving both design flexibility and assembly aesthetics.

The unique manufacturing process of integral pre-punched palms make IBS/IBSB Advanced ready to connect out of the box. There are no lugs to purchase or install, making connections simpler and faster and eliminates faulty connections due to vibration or fatigue.

IBS/IBSB Advanced is compatible with all major brand molded case circuit breakers.

The advanced technology insulation is a high-resistance low smoke, halogen-free and flame retardant thermoplastic.

IBS/IBSB Advanced does not generate corrosive gases and produces a relatively low smoke opacity in accordance with IEC 61034-2 and UL 2885. The low smoke characteristic improves visibility conditions for people to be able to easily locate the emergency exit and also allows rescue workers to better assess an emergency situation. IBS/IBSB Advanced means greater safety for individuals, less damage for your electrical equipment and less environmental impact.



The halogen-free feature enables a reduction in the quantity of toxic smoke. IBS/IBSB Advanced does not contain any halogens, according to IEC 60754-1 and UL 2885, minimizing toxicity and making it the ideal product for use in enclosed spaces such as data centers, rail, and public facilities such as hospitals and schools. This also facilitates the use of IBS/IBSB Advanced in specific applications such as submarines, switchboards and other enclosed environments that require a low emissions solution.

In addition to the above features, IBS/IBSB Advanced is compliant with the UL 94-V0 testing standard and glow wire test 960 °C. The flame retardant portion of the test illustrates the self-extinguish feature. This superior feature of IBS/IBSB Advanced is also shown by the Limiting Oxygen Index (LOI) at 30%. In case of fire, IBS/IBSB Advanced generates a limited quantity of smoke that is less damaging to your electrical equipment.

CERTIFICATIONS



FEATURES

- Suitable for all main molded case circuit breakers
- Resistant to vibration, improving reliability and performance
- Insulated by high-resistance, halogen free, flame retardant and low smoke material
- Tinned copper provides superior corrosion resistance
- Improves assembly flexibility and aesthetics
- Quick and easy installation
- No additional cutting, stripping, crimping and punching needed
- Integral palm without lugs or terminals reduces material and assembly weight
- Conforms to NF EN 45545 obtaining an HL3 classification for chapters R22 and R23
- DNV GL® and Bureau Veritas certified for marine and offshore applications
- Small wire diameter provides maximum flexibility
- Dramatically smaller and more flexible than comparable cable based on ampacity
- Better power density than cable with lower skin effect ratio
- Reduces total installation cost
- RoHS compliant

Tinned copper allows for copper or aluminum conductor connections

On request, can be manufactured with other colors (typically with Orange sleeve for battery connection)

SPECIFICATIONS

Wire Diameter:	0.01in
Insulation Thickness:	0.07in
Dielectric Strength:	20
Insulation Elongation:	500%
Max Working Voltage, UL 67:	600
Max Working Voltage, IEC/UL 758:	1000; 1500
Max Working Voltage, EN 50264-3-1:	6000V
Material:	Copper; Thermoplastic Elastomer
Complies With:	IEC® 60439.1; IEC® 60695-2-11 (Glow Wire Test 960 °C); IEC® 61439.1; IEC® 61439.1 Class II
Halogen Free Rating:	UL® 2885; IEC® 60754-1; IEC® 62821-1
Low Smoke Rating:	IEC® 61034-2; ISO 5659-2; UL® 2885
UV Resistance Rating:	UL® 2556; UL® 854
Certification Details:	UL® 67; UL® 758
Flammability Rating:	UL® 94V-0
Working Temperature:	-58 to 239°F

Table 1/3

Catalog Number	Article Number	Typical Application Current Rating	Peak Short Circuit Current (Ipk)	Finish	Cross Section	Conductor Width
IBSADV25-1030	534506	160A	14kA	Tinned	49.34kcmil	0.79in
IBSADV25-230	534500	160A	14kA	Tinned	49.34kcmil	0.79in
IBSADV25-330	534501	160A	14kA	Tinned	49.34kcmil	0.79in
IBSADV25-430	534502	160A	14kA	Tinned	49.34kcmil	0.79in
IBSADV25-530	534503	160A	14kA	Tinned	49.34kcmil	0.79in
IBSADV25-630	534504	160A	14kA	Tinned	49.34kcmil	0.79in
IBSADV25-830	534505	160A	14kA	Tinned	49.34kcmil	0.79in

CatalogNumber	Article Number	Typical Application Current Rating	Peak Short Circuit Current (I _{pk})	Finish	Cross Section	Conductor Width
IBSADV50-1030	534513	250A	30kA	Tinned	98.68kcmil	0.79in
IBSADV50-230	534507	250A	30kA	Tinned	98.68kcmil	0.79in
IBSADV50-330	534508	250A	30kA	Tinned	98.68kcmil	0.79in
IBSADV50-430	534509	250A	30kA	Tinned	98.68kcmil	0.79in
IBSADV50-530	534510	250A	30kA	Tinned	98.68kcmil	0.79in
IBSADV50-630	534511	250A	30kA	Tinned	98.68kcmil	0.79in
IBSADV50-830	534512	250A	30kA	Tinned	98.68kcmil	0.79in
IBSBADV100-1030	534427	350A	70kA	Tinned	197.35kcmil	0.94in
IBSBADV100-230	534421	350A	70kA	Tinned	197.35kcmil	0.94in
IBSBADV100-330	534422	350A	70kA	Tinned	197.35kcmil	0.94in
IBSBADV100-430	534423	350A	70kA	Tinned	197.35kcmil	0.94in
IBSBADV100-530	534424	350A	70kA	Tinned	197.35kcmil	0.94in
IBSBADV100-630	534425	350A	70kA	Tinned	197.35kcmil	0.94in
IBSBADV100-830	534426	350A	70kA	Tinned	197.35kcmil	0.94in
IBSBADV120-1030	534434	400A	70kA	Tinned	236.82kcmil	1.26in

CatalogNumber	Article Number	Typical Application Current Rating	Peak Short Circuit Current (I _{pk})	Finish	Cross Section	Conductor Width
IBSBADV120-230	534428	400A	70kA	Tinned	236.82kcmil	1.26in
IBSBADV120-330	534429	400A	70kA	Tinned	236.82kcmil	1.26in
IBSBADV120-430	534430	400A	70kA	Tinned	236.82kcmil	1.26in
IBSBADV120-530	534431	400A	70kA	Tinned	236.82kcmil	1.26in
IBSBADV120-630	534432	400A	70kA	Tinned	236.82kcmil	1.26in
IBSBADV120-830	534433	400A	70kA	Tinned	236.82kcmil	1.26in
IBSBADV185-1030	534440	500A	70kA	Tinned	365.1kcmil	1.26in
IBSBADV185-330	534435	500A	70kA	Tinned	365.1kcmil	1.26in
IBSBADV185-430	534436	500A	70kA	Tinned	365.1kcmil	1.26in
IBSBADV185-530	534437	500A	70kA	Tinned	365.1kcmil	1.26in
IBSBADV185-630	534438	500A	70kA	Tinned	365.1kcmil	1.26in
IBSBADV185-830	534439	500A	70kA	Tinned	365.1kcmil	1.26in
IBSBADV240-1030	534446	630A	80kA	Bare, Tinned	473.65kcmil	1.26in

CatalogNumber	Article Number	Typical Application Current Rating	Peak Short Circuit Current (Ipk)	Finish	Cross Section	Conductor Width
IBSBADV240-330	534441	630A	80kA	Bare, Tinned	473.65kcmil	1.26in
IBSBADV240-430	534442	630A	80kA	Bare, Tinned	473.65kcmil	1.26in
IBSBADV240-530	534443	630A	80kA	Bare, Tinned	473.65kcmil	1.26in
IBSBADV240-630	534444	630A	80kA	Bare, Tinned	473.65kcmil	1.26in
IBSBADV240-830	534445	630A	80kA	Bare, Tinned	473.65kcmil	1.26in
IBSBADV25-1030	534406	160A	14kA	Tinned	49.34kcmil	0.47in
IBSBADV25-230	534400	160A	14kA	Tinned	49.34kcmil	0.47in
IBSBADV25-330	534401	160A	14kA	Tinned	49.34kcmil	0.47in
IBSBADV25-430	534402	160A	14kA	Tinned	49.34kcmil	0.47in
IBSBADV25-530	534403	160A	14kA	Tinned	49.34kcmil	0.47in
IBSBADV25-630	534404	160A	14kA	Tinned	49.34kcmil	0.47in
IBSBADV25-830	534405	160A	14kA	Tinned	49.34kcmil	0.47in
IBSBADV50-1030	534413	250A	30kA	Tinned	98.68kcmil	0.79in
IBSBADV50-230	534407	250A	30kA	Tinned	98.68kcmil	0.79in
IBSBADV50-330	534408	250A	30kA	Tinned	98.68kcmil	0.79in

CatalogNumber	Article Number	Typical Application Current Rating	Peak Short Circuit Current (I _{pk})	Finish	Cross Section	Conductor Width
IBSBADV50-430	534409	250A	30kA	Tinned	98.68kcmil	0.79in
IBSBADV50-530	534410	250A	30kA	Tinned	98.68kcmil	0.79in
IBSBADV50-630	534411	250A	30kA	Tinned	98.68kcmil	0.79in
IBSBADV50-830	534412	250A	30kA	Tinned	98.68kcmil	0.79in
IBSBADV70-1030	534420	300A	30kA	Tinned	138.15kcmil	0.79in
IBSBADV70-230	534414	300A	30kA	Tinned	138.15kcmil	0.79in
IBSBADV70-330	534415	300A	30kA	Tinned	138.15kcmil	0.79in
IBSBADV70-430	534416	300A	30kA	Tinned	138.15kcmil	0.79in
IBSBADV70-530	534417	300A	30kA	Tinned	138.15kcmil	0.79in
IBSBADV70-630	534418	300A	30kA	Tinned	138.15kcmil	0.79in
IBSBADV70-830	534419	300A	30kA	Tinned	138.15kcmil	0.79in

Table 2/3

Catalog Number	Article Number	Conductor Thickness	Length (L)	A	B	C
IBSADV25-1030	534506	0.07in	40.55in	0.39in	0.47in	0.98in
IBSADV25-230	534500	0.07in	9.06in	0.39in	0.47in	0.98in
IBSADV25-330	534501	0.07in	12.99in	0.39in	0.47in	0.98in
IBSADV25-430	534502	0.07in	16.93in	0.39in	0.47in	0.98in
IBSADV25-530	534503	0.07in	20.87in	0.39in	0.47in	0.98in

CatalogNumber	Article Number	Conductor Thickness	Length (L)	A	B	C
IBSADV25-630	534504	0.07in	24.8in	0.39in	0.47in	0.98in
IBSADV25-830	534505	0.07in	32.68in	0.39in	0.47in	0.98in
IBSADV50-1030	534513	0.11in	40.55in	0.47in	0.47in	1.06in
IBSADV50-230	534507	0.11in	9.06in	0.47in	0.47in	1.06in
IBSADV50-330	534508	0.11in	12.99in	0.47in	0.47in	1.06in
IBSADV50-430	534509	0.11in	16.93in	0.47in	0.47in	1.06in
IBSADV50-530	534510	0.11in	20.87in	0.47in	0.47in	1.06in
IBSADV50-630	534511	0.11in	24.8in	0.47in	0.47in	1.06in
IBSADV50-830	534512	0.11in	32.68in	0.47in	0.47in	1.06in
IBSBADV100-1030	534427	0.2in	40.55in	0.35in	0.43in	1.22in
IBSBADV100-230	534421	0.2in	9.06in	0.35in	0.43in	1.22in
IBSBADV100-330	534422	0.2in	12.99in	0.35in	0.43in	1.22in
IBSBADV100-430	534423	0.2in	16.93in	0.35in	0.43in	1.22in
IBSBADV100-530	534424	0.2in	20.87in	0.35in	0.43in	1.22in
IBSBADV100-630	534425	0.2in	24.8in	0.35in	0.43in	1.22in
IBSBADV100-830	534426	0.2in	32.68in	0.35in	0.43in	1.22in

CatalogNumber	Article Number	Conductor Thickness	Length (L)	A	B	C
IBSBADV120-1030	534434	0.17in	40.55in	0.43in	0.43in	1.54in
IBSBADV120-230	534428	0.17in	9.06in	0.43in	0.43in	1.54in
IBSBADV120-330	534429	0.17in	12.99in	0.43in	0.43in	1.54in
IBSBADV120-430	534430	0.17in	16.93in	0.43in	0.43in	1.54in
IBSBADV120-530	534431	0.17in	20.87in	0.43in	0.43in	1.54in
IBSBADV120-630	534432	0.17in	24.8in	0.43in	0.43in	1.54in
IBSBADV120-830	534433	0.17in	32.68in	0.43in	0.43in	1.54in
IBSBADV185-1030	534440	0.28in	40.55in	0.47in	0.55in	1.54in
IBSBADV185-330	534435	0.28in	12.99in	0.47in	0.55in	1.54in
IBSBADV185-430	534436	0.28in	16.93in	0.47in	0.55in	1.54in
IBSBADV185-530	534437	0.28in	20.87in	0.47in	0.55in	1.54in
IBSBADV185-630	534438	0.28in	24.8in	0.47in	0.55in	1.54in
IBSBADV185-830	534439	0.28in	32.68in	0.47in	0.55in	1.54in

CatalogNumber	Article Number	Conductor Thickness	Length (L)	A	B	C
IBSBADV240-1030	534446	0.36in	40.55in	0.47in	0.55in	1.54in
IBSBADV240-330	534441	0.36in	12.99in	0.47in	0.55in	1.54in
IBSBADV240-430	534442	0.36in	16.93in	0.47in	0.55in	1.54in
IBSBADV240-530	534443	0.36in	20.87in	0.47in	0.55in	1.54in
IBSBADV240-630	534444	0.36in	24.8in	0.47in	0.55in	1.54in
IBSBADV240-830	534445	0.36in	32.68in	0.47in	0.55in	1.54in
IBSBADV25-1030	534406	0.11in	40.55in	0.26in	0.26in	0.71in
IBSBADV25-230	534400	0.11in	9.06in	0.26in	0.26in	0.71in
IBSBADV25-330	534401	0.11in	12.99in	0.26in	0.26in	0.71in
IBSBADV25-430	534402	0.11in	16.93in	0.26in	0.26in	0.71in
IBSBADV25-530	534403	0.11in	20.87in	0.26in	0.26in	0.71in
IBSBADV25-630	534404	0.11in	24.8in	0.26in	0.26in	0.71in
IBSBADV25-830	534405	0.11in	32.68in	0.26in	0.26in	0.71in
IBSBADV50-1030	534413	0.11in	40.55in	0.35in	0.43in	1.06in
IBSBADV50-230	534407	0.11in	9.06in	0.35in	0.43in	1.06in

CatalogNumber	Article Number	Conductor Thickness	Length (L)	A	B	C
IBSBADV50-330	534408	0.11in	12.99in	0.35in	0.43in	1.06in
IBSBADV50-430	534409	0.11in	16.93in	0.35in	0.43in	1.06in
IBSBADV50-530	534410	0.11in	20.87in	0.35in	0.43in	1.06in
IBSBADV50-630	534411	0.11in	24.8in	0.35in	0.43in	1.06in
IBSBADV50-830	534412	0.11in	32.68in	0.35in	0.43in	1.06in
IBSBADV70-1030	534420	0.17in	40.55in	0.35in	0.43in	1.06in
IBSBADV70-230	534414	0.17in	9.06in	0.35in	0.43in	1.06in
IBSBADV70-330	534415	0.17in	12.99in	0.35in	0.43in	1.06in
IBSBADV70-430	534416	0.17in	16.93in	0.35in	0.43in	1.06in
IBSBADV70-530	534417	0.17in	20.87in	0.35in	0.43in	1.06in
IBSBADV70-630	534418	0.17in	24.8in	0.35in	0.43in	1.06in
IBSBADV70-830	534419	0.17in	32.68in	0.35in	0.43in	1.06in

Table 3/3

Catalog Number	Article Number	D	Hole Size 1 (HS1)	Hole Size 2 (HS2)	Unit Weight
IBSADV25-1030	534506	0.24in	0.33in	0.41in	0.9lb
IBSADV25-230	534500	0.24in	0.33in	0.41in	2.09lb
IBSADV25-330	534501	0.24in	0.33in	0.41in	0.31lb
IBSADV25-430	534502	0.24in	0.33in	0.41in	0.37lb

Catalog Number	Article Number	D	Hole Size 1 (HS1)	Hole Size 2 (HS2)	Unit Weight
IBSADV25-530	534503	0.24in	0.33in	0.41in	0.46lb
IBSADV25-630	534504	0.24in	0.33in	0.41in	0.55lb
IBSADV25-830	534505	0.24in	0.33in	0.41in	0.73lb
IBSADV50-1030	534513	0.32in	0.41in	0.41in	1.43lb
IBSADV50-230	534507	0.32in	0.41in	0.41in	0.35lb
IBSADV50-330	534508	0.32in	0.41in	0.41in	0.49lb
IBSADV50-430	534509	0.32in	0.41in	0.41in	0.64lb
IBSADV50-530	534510	0.32in	0.41in	0.41in	0.78lb
IBSADV50-630	534511	0.32in	0.41in	0.41in	0.9lb
IBSADV50-830	534512	0.32in	0.41in	0.41in	1.17lb
IBSBADV100-1030	534427	0.51in	0.33in	0.41in	2.62lb
IBSBADV100-230	534421	0.51in	0.33in	0.41in	0.6lb
IBSBADV100-330	534422	0.51in	0.33in	0.41in	0.86lb
IBSBADV100-430	534423	0.51in	0.33in	0.41in	1.1lb
IBSBADV100-530	534424	0.51in	0.33in	0.41in	1.37lb
IBSBADV100-630	534425	0.51in	0.33in	0.41in	1.61lb
IBSBADV100-830	534426	0.51in	0.33in	0.41in	2.12lb
IBSBADV120-1030	534434	0.47in	0.41in	0.41in	3.15lb

Catalog Number	Article Number	D	Hole Size 1 (HS1)	Hole Size 2 (HS2)	Unit Weight
IBSBADV120-230	534428	0.47in	0.41in	0.41in	0.73lb
IBSBADV120-330	534429	0.47in	0.41in	0.41in	1.04lb
IBSBADV120-430	534430	0.47in	0.41in	0.41in	1.32lb
IBSBADV120-530	534431	0.47in	0.41in	0.41in	1.63lb
IBSBADV120-630	534432	0.47in	0.41in	0.41in	1.94lb
IBSBADV120-830	534433	0.47in	0.41in	0.41in	2.54lb
IBSBADV185-1030	534440	0.63in	0.41in	0.49in	4.63lb
IBSBADV185-330	534435	0.63in	0.41in	0.49in	1.54lb
IBSBADV185-430	534436	0.63in	0.41in	0.49in	1.98lb
IBSBADV185-530	534437	0.63in	0.41in	0.49in	2.43lb
IBSBADV185-630	534438	0.63in	0.41in	0.49in	2.87lb
IBSBADV185-830	534439	0.63in	0.41in	0.49in	3.75lb
IBSBADV240-1030	534446	0.73in	0.41in	0.49in	5.89lb
IBSBADV240-330	534441	0.73in	0.41in	0.49in	1.96lb
IBSBADV240-430	534442	0.73in	0.41in	0.49in	2.51lb
IBSBADV240-530	534443	0.73in	0.41in	0.49in	3.09lb
IBSBADV240-630	534444	0.73in	0.41in	0.49in	3.64lb
IBSBADV240-830	534445	0.73in	0.41in	0.49in	4.76lb

Catalog Number	Article Number	D	Hole Size 1 (HS1)	Hole Size 2 (HS2)	Unit Weight
IBSBADV25-1030	534406	0.35in	0.26in	0.26in	0.77lb
IBSBADV25-230	534400	0.35in	0.26in	0.26in	0.18lb
IBSBADV25-330	534401	0.35in	0.26in	0.26in	0.24lb
IBSBADV25-430	534402	0.35in	0.26in	0.26in	0.33lb
IBSBADV25-530	534403	0.35in	0.26in	0.26in	0.4lb
IBSBADV25-630	534404	0.35in	0.26in	0.26in	0.49lb
IBSBADV25-830	534405	0.35in	0.26in	0.26in	0.62lb
IBSBADV50-1030	534413	0.32in	0.33in	0.41in	1.41lb
IBSBADV50-230	534407	0.32in	0.33in	0.41in	0.33lb
IBSBADV50-330	534408	0.32in	0.33in	0.41in	0.46lb
IBSBADV50-430	534409	0.32in	0.33in	0.41in	0.6lb
IBSBADV50-530	534410	0.32in	0.33in	0.41in	0.73lb
IBSBADV50-630	534411	0.32in	0.33in	0.41in	0.86lb
IBSBADV50-830	534412	0.32in	0.33in	0.41in	1.15lb
IBSBADV70-1030	534420	0.43in	0.33in	0.41in	1.9lb
IBSBADV70-230	534414	0.43in	0.33in	0.41in	0.44lb
IBSBADV70-330	534415	0.43in	0.33in	0.41in	0.62lb
IBSBADV70-430	534416	0.43in	0.33in	0.41in	0.79lb

Catalog Number	Article Number	D	Hole Size 1 (HS1)	Hole Size 2 (HS2)	Unit Weight
IBSBADV70-530	534417	0.43in	0.33in	0.41in	0.97lb
IBSBADV70-630	534418	0.43in	0.33in	0.41in	1.17lb
IBSBADV70-830	534419	0.43in	0.33in	0.41in	1.54lb

ADDITIONAL PRODUCT DETAILS

ΔT = Temperature of conductors – Internal temperature of panel.

This table indicates the temperature rise produced by chosen current in the given section. This calculation does not take into account the heat dissipation from the switch gear.

IBSB Advanced Insulated Braided Conductor with a cross section of 240 mm² (473.65 kcmil) is constructed of red copper strands with tinned palms.

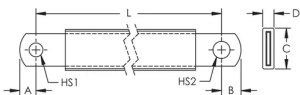
Distance between supports must not exceed 630 mm (17.8") according to IEC 61439-1.

Maximum Ampacity Ratings									
Cross Section (mm ² /kcmil)	ΔT 30° C (A)	ΔT 40° C (A)	ΔT 45° C (A)	ΔT 50° C (A)	ΔT 55° C (A)	ΔT 60° C (A)	ΔT 70° C (A)	2 Bar Current Coefficient	3 Bar Current Coefficient
25/49.34	116	134	142	150	157	164	177	1.6	2
50/98.68	213	246	260	274	288	301	325	1.6	2
70/138.15	226	261	277	291	306	319	345	1.6	2
100/197.35	298	344	365	385	404	422	456	1.6	2
120/236.82	363	419	444	468	491	513	554	1.6	2
185/365.1	416	480	509	537	563	588	635	1.6	2
240/473.65	556	642	681	718	753	786	849	1.6	2

Maximum Ampacity Ratings									
Cross Section (mm ² /kcmil)	ΔT 30° C (A)	ΔT 40° C (A)	ΔT 45° C (A)	ΔT 50° C (A)	ΔT 55° C (A)	ΔT 60° C (A)	ΔT 70° C (A)	2 Bar Current Coefficient	3 Bar Current Coefficient
25/49.34 (IBSB)	116	134	142	150	157	164	177	1.6	2
25/49.34 (IBS)	137	158	167	177	185	193	209	1.6	2
50/98.68	213	246	260	274	288	301	325	1.6	2
70/138.15	226	261	277	291	306	319	345	1.6	2
100/197.35	298	344	365	385	404	422	456	1.6	2
120/236.82	363	419	444	468	491	513	554	1.6	2
185/365.1	416	480	509	537	563	588	635	1.6	2
240/473.65	556	642	681	718	753	786	849	1.6	2

Circuit Breaker Compatibility									
Circuit Breaker Current Rating	125/160 A		250 A		300 A	350 A	400 A	500 A	630 A
Part Number	IBSBADV25x	IBSADV25x	IBSBADV50x	IBSADV50x	IBSBADV70x	IBSBADV100x	IBSBADV120x	IBSBADV185x	IBSBADV240x
Schneider Electric® Compact® (IEC)	NSA NG 125	NSX 100 NSX 160	NSX 250	NSX 250	NSX 400	NSX 400	NSX 400	NSX 630	NSX 630
Square D® PowerPact® (UL)	H-Frame	J-Frame	J-Frame	J-Frame	L-Frame	L-Frame	L-Frame	-	-
ABB® Tmax® (IEC)	T1 T2 XT1 XT2	-	T3 XT3 XT4	T3 XT3 XT4	T4	T4	T5	T5	T5
ABB® Tmax® (UL)	T1 T2 XT1 XT2	T3	T4 XT3 XT4	T4	T5	T5	T5	-	-
GE® Record Plus® (IEC/UL)	FD 160	FD 160	FE 250	FE 250	FG 400	FG 400	FG 400	FG 630	FG 630
Siemens® Sentron® (IEC/UL)	VL160X 3VL1 VL160 3VL2	-	VL250 3VL3	VL250 3VL3	VL400 3VL4	VL400 3VL4	VL400 3VL4	-	-
Moeller® xEnergy® (IEC)	NZM1	-	NZM2	NZM2	NZM3	NZM3	NZM3	NZM3	NZM3
Cutler Hammer® Series G (UL)	EG Frame	JG Frame	JG Frame	JG Frame	LG Frame	LG Frame	LG Frame	LG Frame	LG Frame
Legrand® (IEC)	DPX 160 DPX3 160	-	DPX 250 DPX3 250	DPX 250 DPX3 250	DPX 630	DPX 630	DPX 630	DPX 630	DPX 630
Hager® (IEC)	h3 160	-	h3 250	h3 250	h3 630	h3 630	-	-	-
Rockwell/Allen Bradley (UL)	G-Frame H- Frame	-	I-Frame J- Frame	I-Frame J- Frame	I-Frame J- Frame	-	K-Frame	K-Frame	-
Mitsubishi Electric (IEC)	-	NF125 NF160 DSN125 DSN160	NF250 DSN250	NF250 DSN250	-	NF400 DSN400	-	-	-
OEZ (IEC)	BC160N	-	BD250N BD250S	-	BH630B BH630S	BH630B BH630S	BH630B BH630S	BH630B BH630S	BH630B BH630S

DIAGRAMS



WARNING

nVent products shall be installed and used only as indicated in nVent's product instruction sheets and training materials. Instruction sheets are available at www.nvent.com and from your nVent customer service representative. Improper

installation, misuse, misapplication or other failure to completely follow nVent's instructions and warnings may cause product malfunction, property damage, serious bodily injury and death and/or void your warranty.



Our powerful portfolio of brands:

CADDY ERICO HOFFMAN ILSCO SCHROFF TRACHTE