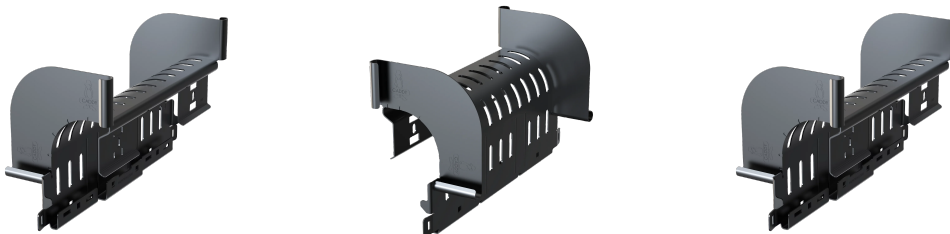


WBT Performance Cable Tray Waterfall



The nVent CADDY WBT Performance Cable Tray Waterfall is a versatile, easy-to-install cable management solution for wire basket trays. Featuring innovative over-sidewall technology, installers can eliminate stress and pressure points on cable while removing the need to cut tray—saving valuable time on the job. Its flexible design and tool-free installation caters to both over-wall and flush-mount applications.

The Waterfall provides robust support and protection for large, high-density cable bundles and is ideal for managing copper, fiber optic, PoE and DAS cables. Available in both 12" and 20" options with a 120-degree bend radius, the sidewalls help funnel cables to an installer's desired location, creating a continuous pathway solution while maintaining a seamless and visually appealing finished result.

When necessary, the Waterfall has designated tie-off areas for grounding and bonding.

FEATURES

Equipped with tie-down openings to facilitate bundled cable options

Powder coating protects against scratches or cable damage

Maintains a 120-degree bend, adhering to TIA-approved radius standards for all cable types

Standard finishes include black powder and electro-galvanized (zinc) coatings, with customization options for other colors upon request

Provides optimal support for high-performance data cable, up to and including fiber optic, Cat 5e, Cat 6, Cat 6A, and Cat 7

SPECIFICATIONS

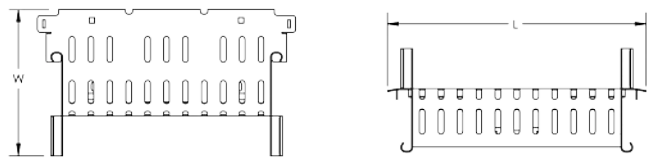
Material: Steel

Table 1/1

Catalog Number	Color	Finish	Length (L)	Height (H)	Width (W)	Unit Weight
WBTWTRFALL1 2EG	Gray	Electrogalvanized	13.66"	5.47"	7.72"	2.64 lb

CatalogNumber	Color	Finish	Length (L)	Height (H)	Width (W)	Unit Weight
WBTWTRFALL1 2BA	Black	Powder Coated	13.66"	5.47"	7.72"	2.64 lb
WBTWTRFALL2 0EG	Gray	Electrogalvaniz ed	21 1/2"	5.47"	7.72"	3.85 lb
WBTWTRFALL2 0BA	Black	Electrogalvaniz ed	21 1/2"	5.47"	7.72"	3.85 lb

DIAGRAMS



WARNING

nVent products shall be installed and used only as indicated in nVent's product instruction sheets and training materials. Instruction sheets are available at www.nvent.com and from your nVent customer service representative. Improper installation, misuse, misapplication or other failure to completely follow nVent's instructions and warnings may cause product malfunction, property damage, serious bodily injury and death and/or void your warranty.

North America

+1.800.753.9221
Option 1 – Customer Care
Option 2 – Technical
Support

Europe

Netherlands:
+31 800-0200135
France:
+33 800 901 793

Europe

Germany:
800 1890272
Other Countries:
+31 13 5835404

APAC

Shanghai:
+ 86 21 2412 1618/19
Sydney:
+61 2 9751 8500



Our powerful portfolio of brands:

CADDY ERICO HOFFMAN ILSCO SCHROFF TRACHTE

