

Universal Restraint Clip



CERTIFICATIONS



FEATURES

Attaches cable brace to structure

Meets CEN/TS 17551:2021 requirements for Seismic Sway Bracing

SPECIFICATIONS

Table 1/2

Catalog Number	Material	Finish	Brace Size	Hole Size (HS)	Thickness (T)	UL Listed Load
CSBURC12	Steel	Electrogalvanized	#12, #18, #36	9/16"	0.17"	771lb
CSBURC12SS	Stainless Steel 316 (EN 1.4401)		#12, #18, #36	9/16"	0.17"	618lb
CSBURC38	Steel	Electrogalvanized	#12, #18, #36	7/16"	0.17"	771lb
CSBURC38SS	Stainless Steel 316 (EN 1.4401)		#12, #18, #36	7/16"	0.17"	618lb

CatalogNumber	Material	Finish	Brace Size	Hole Size (HS)	Thickness (T)	UL Listed Load
CSBURC58	Steel	Electrogalvaniz ed	#12, #18, #36	11/16"	0.17"	771lb
CSBURC58SS	Stainless Steel 316 (EN 1.4401)		#12, #18, #36	11/16"	0.17"	618lb

Table 2/2

Catalog Number	Certifications
CSBURC12	cUL, ICC-ES (Seismic Cable Bracing), UL, ICC-ES, OSHPD/HCAI
CSBURC12SS	
CSBURC38	cUL, ICC-ES, ICC-ES (Seismic Cable Bracing), UL, OSHPD/HCAI
CSBURC38SS	
CSBURC58	OSHPD/HCAI, ICC-ES (Seismic Cable Bracing), cUL, ICC-ES, UL
CSBURC58SS	

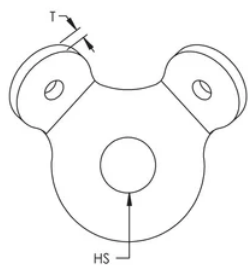
ADDITIONAL PRODUCT DETAILS

Brace member is not included.

Mount to the structure using the center hole. Loop cable through the holes in the bent tabs and swage in place.

UL Loads		
Part Number	Brace Member	Load Rating
CSBURC38	CSB12CBL	418 lb
	CSB18CBL	772 lb
	CSB36CBL	1909 lb
CSBURC12	CSB12CBL	418 lb
	CSB18CBL	772 lb
	CSB36CBL	1909 lb
CSBURC58	CSB12CBL	418 lb
	CSB18CBL	772 lb
	CSB36CBL	1909 lb

DIAGRAMS



WARNING

nVent products shall be installed and used only as indicated in nVent's product instruction sheets and training materials. Instruction sheets are available at www.nvent.com and from your nVent customer service representative. Improper installation, misuse, misapplication or other failure to completely follow nVent's instructions and warnings may cause product malfunction, property damage, serious bodily injury and death and/or void your warranty.

North America

+1.800.753.9221
Option 1 – Customer Care
Option 2 – Technical
Support

Europe

Netherlands:
+31 800-0200135
France:
+33 800 901 793

Europe

Germany:
800 1890272
Other Countries:
+31 13 5835404

APAC

Shanghai:
+ 86 21 2412 1618/19
Sydney:
+61 2 9751 8500



Our powerful portfolio of brands:

CADDY ERICO HOFFMAN ILSCO SCHROFF TRACHTE

