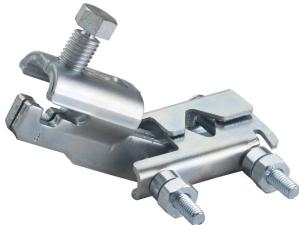


Trapeze Sway Brace, Pipe



CERTIFICATIONS



FEATURES

Seismically braces trapeze hangers

Retrofit ability allows for the brace to be installed after the trapeze assembly is installed

Works with brace members of schedule 40 pipe, EMT conduit, and rigid conduit

One wrench size fits all required hardware, eliminating the need to change tools

Shear-off head helps ensure correct torque and simplifies inspection

FM Specification Tested with the following brace members: 1-2 in Sch40 Pipe, 1 in EMT Conduit, and 1 in Rigid Conduit

SPECIFICATIONS

Table 1/2

Catalog Number	Material	Finish	Rod Size (RS)	Width (W)	Thickness (T)	A
CSBR1	Steel	Electrogalvanized	3/8", 1/2", 5/8", 3/4"	3.2"	0.14"	3 1/2"

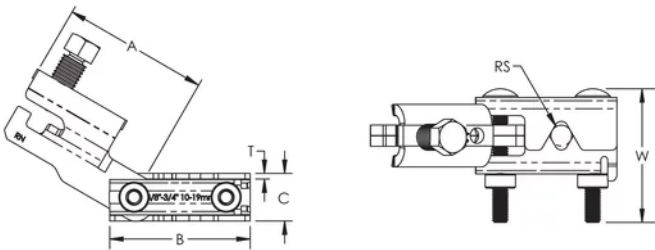
Table 2/2

Catalog Number	B	C
----------------	---	---

CSBR1	3.4"	1.14"
-------	------	-------

FM Specification Testing					
Part Number	Brace Member	Horizontal Capacity per Installation Angle from Vertical			
		30°- 44°	45°- 59°	60°- 74°	75°- 90°
CSBR1	1", 1-1/4", 1-1/2" or 2" NPS Sch 40	755 lb	1,109 lb	1,681 lb	1,875 lb
	1" EMT Conduit Steel as defined in ANSI C80.3	623 lb	876 lb	1,055 lb	1,176 lb
	1" Rigid Metallic Conduit Steel as defined in ANSI C80.1	623 lb	876 lb	1,055 lb	1,176 lb

DIAGRAMS



WARNING

nVent products shall be installed and used only as indicated in nVent's product instruction sheets and training materials. Instruction sheets are available at www.nvent.com and from your nVent customer service representative. Improper installation, misuse, misapplication or other failure to completely follow nVent's instructions and warnings may cause product malfunction, property damage, serious bodily injury and death and/or void your warranty.

North America

+1.800.753.9221
Option 1 – Customer Care
Option 2 – Technical
Support

Europe

Netherlands:
+31 800-0200135
France:
+33 800 901 793

Europe

Germany:
800 1890272
Other Countries:
+31 13 5835404

APAC

Shanghai:
+ 86 21 2412 1618/19
Sydney:
+61 2 9751 8500



Our powerful portfolio of brands:

CADDY ERICO HOFFMAN ILSCO SCHROFF TRACHTE

