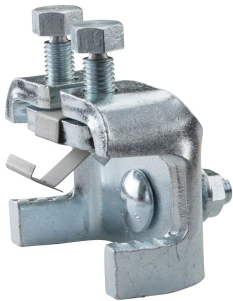


Steel Flange Adapter



This code-compliant Structural Attachment is part of the nVent CADDY line of innovative rigid bracing system, designed to provide superior performance and meet the highest seismic load requirements. Its innovative design allows quick and easy installation onto both top or bottom flange of a wide range of steel I-Beams. Its snap-off bolts make inspection of seismic sway braces simple.

CERTIFICATIONS



FEATURES

Installs on top or bottom flange of I-beams or bar joists

Low profile easily fits between metal deck and steel structure

Thumb spring retainer allows for ease of positioning

Available pre-assembled to the Universal Structural Bracket, eliminating field assembly

Snap-off bolt head helps enable easy installation and inspection of seismic sway braces

Meets NFPA® 13 as pre-qualified for seismic applications

FM® Specification Tested

SPECIFICATIONS

Finish: Electrogalvanized

Material: Steel

Table 1/2

Catalog Number	Flange Thickness (FT)	Rod Size (RS)	A	B	C
CSBS1	1/4" - 3/4"	1/2"	13/16"	7/8"	3 5/8"
CSBS2	3/4" - 1 1/4"	1/2"	7/8"	7/8"	3 5/8"

Table 2/2

Catalog Number	D	Certifications
CSBS1	2 5/8"	FM Approved, Seismic, OSHPD, UL, Korea Fire Institute, Rigid Seismic, KOR, cUL
CSBS2	3 1/8"	OSHPD, UL, cUL, FM Approved, Seismic

ADDITIONAL PRODUCT DETAILS

Structure Attachment and Brace Member are not included.

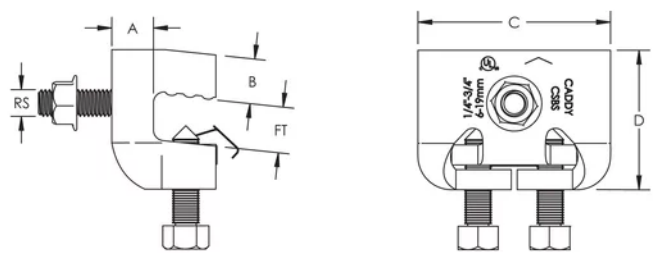
UL Loads

Part Number	Structure Attachment Fitting	Flange Thickness	Brace Member	Load Rating
CSBS1xxx	CSBU1xxx	1/4" - 3/8"	1" - 2" Sch. 40 NPS	1500 lb
		3/8" - 3/4"		1700 lb
	CSBURC12	1/4" - 3/4"	CSB12CBL	418 lb
			CSB18CBL	772 lb
			CSB36CBL	1100 lb
CSBS2xxx	CSBU1xxx	3/4" - 1-1/4"	1" - 2" Sch. 40 NPS	1700 lb
	CSBURC12	3/4" - 1-1/4"	CSB12CBL	418 lb
			CSB18CBL	772 lb
			CSB36CBL	1100 lb

FM Loads

Part Number	Horizontal Capacity per Installation Angle from Vertical							
	Perpendicular to Structure				Parallel to Structure			
	30°- 44°	45°- 59°	60°- 74°	75°- 90°	30°- 44°	45°- 59°	60°- 74°	75°- 90°
CSBS1xxx	850 lb	1,780 lb	2,770 lb	2,840 lb	880 lb	1,430 lb	2,020 lb	2,410 lb
CSBS2xxx	1,220 lb	2,140 lb	2,580 lb	2,870 lb	1,100 lb	1,820 lb	2,190 lb	2,680 lb

DIAGRAMS



WARNING

nVent products shall be installed and used only as indicated in nVent's product instruction sheets and training materials. Instruction sheets are available at www.nvent.com and from your nVent customer service representative. Improper installation, misuse, misapplication or other failure to completely follow nVent's instructions and warnings may cause product malfunction, property damage, serious bodily injury and death and/or void your warranty.

North America

+1.800.753.9221
Option 1 – Customer Care
Option 2 – Technical
Support

Europe

Netherlands:
+31 800-0200135
France:
+33 800 901 793

Europe

Germany:
800 1890272
Other Countries:
+31 13 5835404

APAC

Shanghai:
+ 86 21 2412 1618/19
Sydney:
+61 2 9751 8500



Our powerful portfolio of brands:

CADDY ERICO HOFFMAN ILSCO SCHROFF TRACHTE

