

SOSR Stand Off Two Hole Strap for CPVC Pipe



CERTIFICATIONS



FEATURES

Includes flared edges to protect piping

Rated for use with CPVC fire sprinkler pipe

Positions pipe 1-1/2" (38 mm) off the mounting surface eliminating the need for wooden spacer blocks

Can be mounted in both vertical and horizontal positions on concrete, steel and wood

Meets the UL® 203 stringent upward thrust requirement

UL® Listed as both a hanger and pipe restraint

Complies with static load requirements of NFPA® 13

Includes mounting screws

Can be used with 3TW backing nut on composite wood joist installations

SPECIFICATIONS

Finish: Pregalvanized

Material: Steel

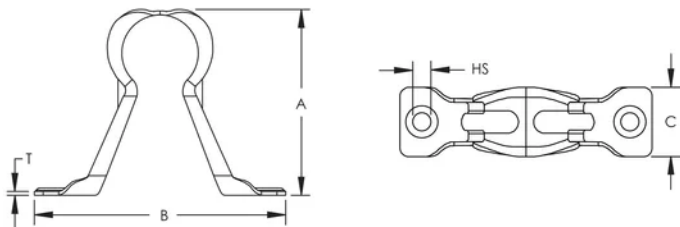
Table 1/2

Catalog Number	Pipe Size	Hole Size (HS)	A	B	C	Thickness (T)
SOSR075	3/4"	0.2"	2 11/16"	3 5/8"	1"	18ga
SOSR100	1"	0.2"	2 15/16"	3 11/16"	1"	18ga
SOSR125	1 1/4" Min	0.2"	3 5/16"	3 5/8"	1"	16ga
SOSR150	1 1/2"	0.2"	3 7/8"	4 1/2"	1"	16ga
SOSR200	2" Min	0.2"	4"	5 1/4"	1"	16ga

Table 2/2

Catalog Number	Hanger Spacing
SOSR075	6' Max
SOSR100	6' Max
SOSR125	6' Max
SOSR150	7' Max
SOSR200	8' Max

DIAGRAMS



WARNING

nVent products shall be installed and used only as indicated in nVent's product instruction sheets and training materials. Instruction sheets are available at www.nvent.com and from your nVent customer service representative. Improper installation, misuse, misapplication or other failure to completely follow nVent's instructions and warnings may cause

product malfunction, property damage, serious bodily injury and death and/or void your warranty.

North America

+1.800.753.9221
Option 1 – Customer Care
Option 2 – Technical
Support

Europe

Netherlands:
+31 800-0200135
France:
+33 800 901 793

Europe

Germany:
800 1890272
Other Countries:
+31 13 5835404

APAC

Shanghai:
+ 86 21 2412 1618/19
Sydney:
+61 2 9751 8500



Our powerful portfolio of brands:

CADDY ERICO HOFFMAN ILSCO SCHROFF TRACHTE

