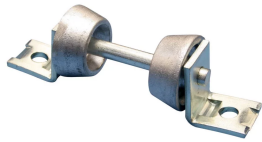


# ROL13 Strut Mounted Roller



## FEATURES

Designed for strut mounting

For applications where there is longitudinal pipe movement

## SPECIFICATIONS

**Finish:** Electrogalvanized

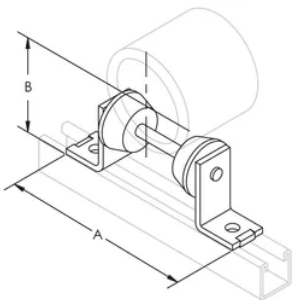
**Material:** Steel

Table 1/1

Catalog Number	Pipe Size
ROL13034EG	3" - 4"
ROL13046EG	4" - 6"
ROL13068EG	6" - 8"

Pipe Size	Saddle Number	Covering Thickness	Outer Diameter	Radius	A	B
4"	None	0"	4 1/2"	2 1/4"	8 1/4"	4 1/2"
	630	1 1/16"	7 1/8"	3 9/16"	9 1/4"	5 11/16"
	631	1 9/16"	8 1/8"	4 1/16"	10 1/8"	6 1/16"
	632	2 1/16"	9 1/8"	4 9/16"	10 1/8"	6 5/8"
	633	2 9/16"	10"	5"	10 1/8"	7 1/16"
	634	3 1/16"	11 1/4"	5 5/8"	10 7/8"	7 5/8"
	635	4 1/16"	13"	6 1/2"	10 7/8"	8 9/16"
5"	None	0"	5 5/8"	2 13/16"	8 1/4"	5 1/16"
	630	1"	8 1/4"	4 1/8"	10 1/8"	6 1/8"
	631	1 1/2"	9 3/8"	4 11/16"	10 1/8"	6 11/16"
	632	2"	10 3/8"	5 3/16"	10 7/8"	7"
	633	2 9/16"	11 1/4"	5 5/8"	10 7/8"	7 5/8"
	634	3 1/16"	12 3/8"	6 3/16"	10 7/8"	8 1/8"
	635	4 3/16"	14 1/4"	7 1/8"	10 7/8"	9 3/16"
6"	None	0"	6 5/8"	3 5/16"	9 1/4"	5 7/16"
	630	1"	9"	4 1/2"	10 1/8"	6 9/16"
	631	1 1/2"	10 1/8"	5 1/16"	10 7/8"	7"
	632	2"	11"	5 1/2"	10 7/8"	7 1/2"
	633	2 1/2"	12 3/8"	6 3/16"	10 7/8"	8 3/16"
	634	3"	13 1/2"	6 3/4"	10 7/8"	8 5/8"
	635	4 1/8"	15 1/8"	7 9/16"	10 7/8"	9 11/16"
8"	None	0"	8 5/8"	4 5/16"	10 1/8"	6 3/8"
	631	1 1/2"	12"	6"	10 7/8"	8"
	632	2"	13"	6 1/2"	10 7/8"	8 9/16"
	633	2 11/16"	14 1/2"	7 1/4"	10 7/8"	9 5/16"
	634	3 1/8"	15 3/8"	7 11/16"	10 7/8"	9 13/16"
	635	4 1/8"	17 3/8"	8 11/16"	10 7/8"	10 7/8"

## DIAGRAMS



**WARNING**

nVent products shall be installed and used only as indicated in nVent's product instruction sheets and training materials. Instruction sheets are available at [www.nvent.com](http://www.nvent.com) and from your nVent customer service representative. Improper installation, misuse, misapplication or other failure to completely follow nVent's instructions and warnings may cause product malfunction, property damage, serious bodily injury and death and/or void your warranty.

**North America**

+1.800.753.9221  
Option 1 – Customer Care  
Option 2 – Technical  
Support

**Europe**

Netherlands:  
+31 800-0200135  
France:  
+33 800 901 793

**Europe**

Germany:  
800 1890272  
Other Countries:  
+31 13 5835404

**APAC**

Shanghai:  
+ 86 21 2412 1618/19  
Sydney:  
+61 2 9751 8500



Our powerful portfolio of brands:

**CADDY   ERICO   HOFFMAN   ILSCO   SCHROFF   TRACHTE**

