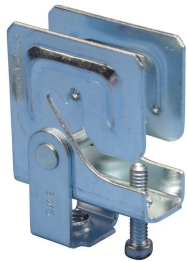


PHSW Multi-Purpose Purlin Clamp with Swivel



CERTIFICATIONS



FEATURES

Attachment to bottom of purlins and beams to support threaded rod

Swivel feature option for attachment to purlins under sloped roofs

SPECIFICATIONS

Finish: Electrogalvanized

Material: Steel

Table 1/2

Catalog Number	Rod Size (RS)	Flange Thickness (FT)	B	Torque (TQ)	Static Load 1 (F1)	Static Load 2 (F2)
PHSW4	1/4"	1/4" Max	3/4" Min	30 ft·lbf	200lb	160lb
PHSW6	3/8"	1/4" Max	3/4" Min	30 ft·lbf	200lb	160lb
PHSW6FP	3/8"	1/4" Max	3/4" Min	30 ft·lbf	200lb	

Table 2/2

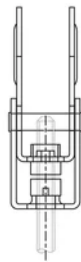
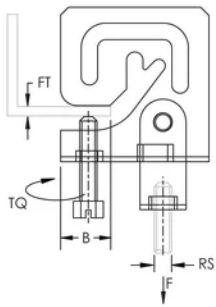
Catalog Number	Nut Included
PHSW4	No
PHSW6	No
PHSW6FP	Yes

ADDITIONAL PRODUCT DETAILS

A jam nut is required for fire protection applications.

Refer to Static Load 1 when attaching to C and Z purlins. Refer to Static Load 2 when attaching to a flat flange.

DIAGRAMS



WARNING

nVent products shall be installed and used only as indicated in nVent's product instruction sheets and training materials. Instruction sheets are available at www.nvent.com and from your nVent customer service representative. Improper installation, misuse, misapplication or other failure to completely follow nVent's instructions and warnings may cause product malfunction, property damage, serious bodily injury and death and/or void your warranty.

North America

+1.800.753.9221

Option 1 – Customer Care

Option 2 – Technical

Support

Europe

Netherlands:

+31 800-0200135

France:

+33 800 901 793

Europe

Germany:

800 1890272

Other Countries:

+31 13 5835404

APAC

Shanghai:

+ 86 21 2412 1618/19

Sydney:

+61 2 9751 8500



Our powerful portfolio of brands:

CADDY

ERICO

HOFFMAN

ILSCO

SCHROFF

TRACHTE

