

# nVent CADDY Speed Link SLS with Hook



## CERTIFICATIONS



## FEATURES

Complete system includes wire, locking device and pre-assembled hook end fitting

Hooks to a wide range of nVent CADDY fasteners

Fastens to the building structure or hanging services by looping around and hooking to wire rope

Easy to remove for applications requiring maintenance

Spring latch helps provide secure connection

Insert cable through hole and use bottom side of hook as an end stop

Finger tightening of nut secures the locking device into position without tools

Installs in strut profiles without the need to insert fingers or tools into the strut

## SPECIFICATIONS

<b>Static Load Safety Factor:</b>	5:1
<b>Finish:</b>	Electrogalvanized
<b>Material:</b>	Steel;Zinc Alloy;Polypropylene
<b>Complies With:</b>	SMACNA HVAC-DCS

Table 1/3

Catalog Number	Wire Rope Diameter	Wire Rope Length	A	B	C	Height 1 (H1)
SLS2L2	2 mm	6.6'	2.24"	0.79"	0.22"	2.1"
SLS2L3	2 mm	9.9'	2.24"	0.79"	0.22"	2.1"
SLS2L10	2 mm	32.8'	2.24"	0.79"	0.22"	2.1"
SLS3L3	3 mm	9.9'	2.27"	0.91"	0.24"	2.1"
SLS3L5	3 mm	16.4'	2.27"	0.91"	0.24"	2.1"
SLS3L10	3 mm	32.8'	2.27"	0.91"	0.24"	2.1"

Table 2/3

Catalog Number	Height 2 (H2)	Thread Size (TS)	Width (W)	Hole Size (HS)	Slot Size (SS)	Thickness (T)
SLS2L2	1.7"	M8	0.63"	0.310" - 0.38"	0.31" x 0.25" - 0.31" x 0.38"	0.15" Max
SLS2L3	1.7"	M8	0.63"	0.310" - 0.38"	0.31" x 0.25" - 0.31" x 0.38"	0.15" Max
SLS2L10	1.7"	M8	0.63"	0.310" - 0.38"	0.31" x 0.25" - 0.31" x 0.38"	0.15" Max
SLS3L3	1.8"	M12	0.8"	1/2" - 0.56"	0.47" x 0.39" - 0.47" x 0.56"	1/4" Max
SLS3L5	1.8"	M12	0.8"	1/2" - 0.56"	0.47" x 0.39" - 0.47" x 0.56"	1/4" Max
SLS3L10	1.8"	M12	0.8"	1/2" - 0.56"	0.47" x 0.39" - 0.47" x 0.56"	1/4" Max

Table 3/3

Catalog Number	Static Load (F)
SLS2L2	60lb
SLS2L3	60lb
SLS2L10	60lb

Catalog Number	Static Load (F)
SLS3L3	150lb
SLS3L5	150lb
SLS3L10	150lb

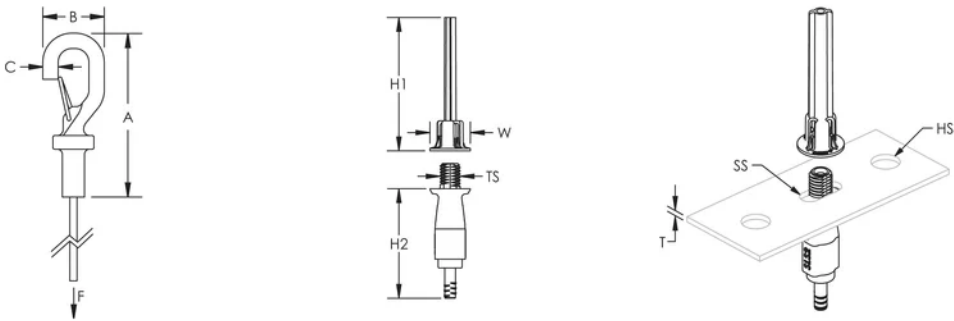
### ADDITIONAL PRODUCT DETAILS

The 2 mm locking device is compatible with C-Channel Types E0 and E0L.

The 3 mm locking device is compatible with C-Channel Types E1, E2, E2L, E3, E4, E5, Strut Channel Type C, Slotted, Strut Channel Type A, Slotted, Strut Channel Type AS, Perforated, Strut Channel Type CC, Slotted, Strut Channel Type AA, Slotted.

Total load per wire on a multi-tier trapeze must not exceed static load.

### DIAGRAMS



### WARNING

nVent products shall be installed and used only as indicated in nVent's product instruction sheets and training materials. Instruction sheets are available at [www.nvent.com](http://www.nvent.com) and from your nVent customer service representative. Improper installation, misuse, misapplication or other failure to completely follow nVent's instructions and warnings may cause product malfunction, property damage, serious bodily injury and death and/or void your warranty.

#### North America

+1.800.753.9221

Option 1 – Customer Care

Option 2 – Technical

Support

#### Europe

Netherlands:

+31 800-0200135

France:

+33 800 901 793

#### Europe

Germany:

800 1890272

Other Countries:

+31 13 5835404

#### APAC

Shanghai:

+ 86 21 2412 1618/19

Sydney:

+61 2 9751 8500



Our powerful portfolio of brands:

**CADDY**

**ERICO**

**HOFFMAN**

**ILSCO**

**SCHROFF**

**TRACHTE**

