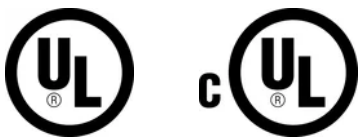


nVent CADDY Speed Link SLK with Y-Hook



CERTIFICATIONS



FEATURES

Complete system includes wire, locking device and two pre-assembled hook end fittings

Fastens to the building structure and hooks to hanging services and tray

Spring latch helps provide secure connection

Convenient design allows one hook to be temporarily detached for maintenance or to add cables to the tray

Single drop with double hook provides increased stability to the system

Also available in a single-hook end fitting configuration

SPECIFICATIONS

Wire Rope Diameter:	2 mm
Static Load Safety Factor:	5:1
Finish:	Electrogalvanized
Material:	Steel;Zinc Alloy;Polypropylene
Complies With:	SMACNA HVAC-DCS

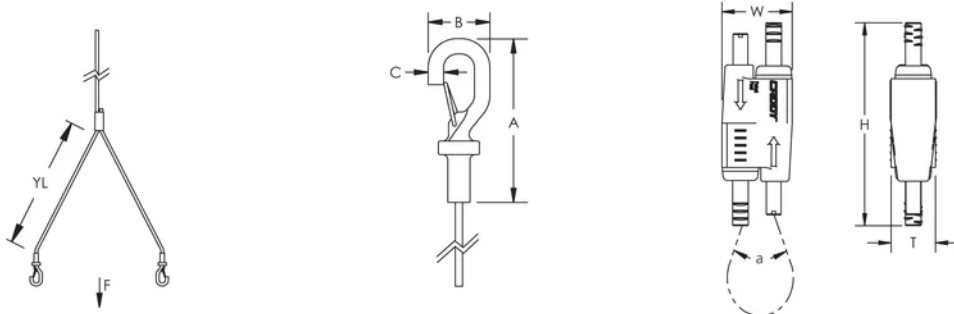
Table 1/1

Catalog Number	Wire Rope Length	Wire Rope "Y" Length (YL)	A	B	C	Static Load (F)
----------------	------------------	---------------------------	---	---	---	-----------------

SLK2YH500L2	6.6'	19.6"	2.3"	0.9"	1/4"	100lbf
SLK2YH500L2R 2	6.6'	19.6"	2.3"	0.9"	1/4"	100lbf
SLK2YH500L3	9.9'	19.6"	2.3"	0.9"	1/4"	100lbf
SLK2YH500L3R 2	9.9'	19.6"	2.3"	0.9"	1/4"	100lbf
SLK2YH500L7	22.3'	19.6"	2.3"	0.9"	1/4"	100lbf

Thickness (T): 1/2"
Width (W): 3/4"
Height (H): 2.15"
Angle (a): 90 ° Max

DIAGRAMS



WARNING

nVent products shall be installed and used only as indicated in nVent's product instruction sheets and training materials. Instruction sheets are available at www.nvent.com and from your nVent customer service representative. Improper installation, misuse, misapplication or other failure to completely follow nVent's instructions and warnings may cause product malfunction, property damage, serious bodily injury and death and/or void your warranty.

North America

+1.800.753.9221

Option 1 – Customer Care

Option 2 – Technical

Support

Europe

Netherlands:

+31 800-0200135

France:

+33 800 901 793

Europe

Germany:

800 1890272

Other Countries:

+31 13 5835404

APAC

Shanghai:

+ 86 21 2412 1618/19

Sydney:

+61 2 9751 8500



Our powerful portfolio of brands:

CADDY

ERICO

HOFFMAN

ILSCO

SCHROFF

TRACHTE

