

nVent CADDY Rod Lock Bar Joist Hanger



FEATURES

Easily installs from underneath the bar joist

Easily installs on lower or upper truss chord of the bar joist

Plastic protection cap prevents dirt or structural coatings from obstructing the "push-to-install" mechanism

Prefabricated assemblies easily lift and lock into place, helping to save time and money

Easy "push-to-install" design allows installers to simply push the threaded rod through the mounting hole, instantly holding it in position

Works with slightly damaged threads and minor burrs on the threaded rod

SPECIFICATIONS

Table 1/2

Catalog Number	Material	Finish	Static Load Safety Factor	Rod Size (RS)	Height (H)	Width (W)
CRLJ37EG	Steel	Electrogalvanized	3.5:1	3/8"	7.4"	3.7"

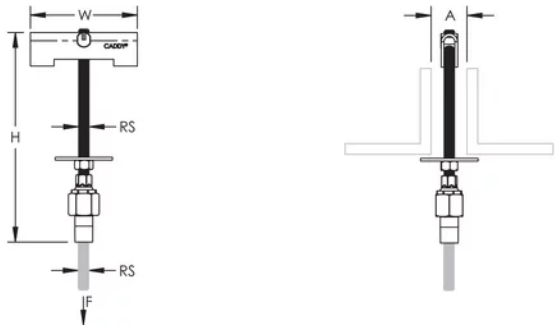
Table 2/2

Catalog Number	A	Wrench Size 1	Wrench Size 2	Static Load (F)
CRLJ37EG	5/8" - 1 1/4"	9/16mm	15/16mm	1000lbf

ADDITIONAL PRODUCT DETAILS

Wrench Size 1 represents hex nut size used to tighten to bar joist. Wrench Size 2 represents nVent CADDY Rod Lock hex nut size.

DIAGRAMS



WARNING

nVent products shall be installed and used only as indicated in nVent's product instruction sheets and training materials. Instruction sheets are available at www.nvent.com and from your nVent customer service representative. Improper installation, misuse, misapplication or other failure to completely follow nVent's instructions and warnings may cause product malfunction, property damage, serious bodily injury and death and/or void your warranty.

North America

+1.800.753.9221
Option 1 – Customer Care
Option 2 – Technical
Support

Europe

Netherlands:
+31 800-0200135
France:
+33 800 901 793

Europe

Germany:
800 1890272
Other Countries:
+31 13 5835404

APAC

Shanghai:
+ 86 21 2412 1618/19
Sydney:
+61 2 9751 8500



Our powerful portfolio of brands:

CADDY ERICO HOFFMAN ILSCO SCHROFF TRACHTE

