

nVent CADDY Pyramid Light-Duty Equipment Support Kit, 4 Post Base



The nVent CADDY Pyramid Light-Duty Equipment Support Kit provides contractors with a quick and easy way to install HVAC mini split units on rooftops. When utilized with the nVent CADDY Pyramid Light-Duty Equipment Support Frame Extension Kit, installers can link multiple HVAC units. The unique attachment clamps and frame design allow for a more flexible and efficient installation method, saving contractors time, money and space.

FEATURES

System takes 80% less time to install compared to standard options on the market

Easily adjusts from 12 -18 in (305 -457 mm), reducing the need for multiple SKUs

Increased adjustability enables flexibility to move bars, sliding the kit as needed

Extension Kit allows for pre-assembly and endless gang-ability of units linked together

Evenly distributes load and avoids damaging roof membrane with nVent CADDY PEK-style foam bottom feet

Product load rating can handle wide range of equipment BTU outputs/sizes

Hot dip galvanized construction and hardware provide superior corrosion resistance in demanding environments

SPECIFICATIONS

Table 1/3

Catalog Number	Material	Finish	Temperature	Height (H)	Length (L)	Post Base (A)
PEKLD4	Steel	Hot-Dip Galvanized	-30 to 130 °F	12" - 18"	41.4"	6" x 4 pc

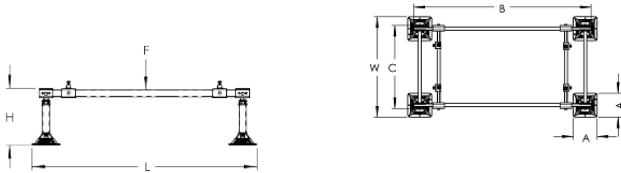
Table 2/3

Catalog Number	Square Tube (B)	Cross Bar Assembly (C)	Width (W)	Surface Area	Unit Weight	Ultimate Static Load (F)
PEKLD4	38.2" x 2 pc	20.5" x 2 pc	26"	144in ²	32.2 lb	400lb

Table 3/3

Catalog Number	Static Load Safety Factor
PEKLD4	3:1

DIAGRAMS



WARNING

nVent products shall be installed and used only as indicated in nVent's product instruction sheets and training materials. Instruction sheets are available at www.nvent.com and from your nVent customer service representative. Improper installation, misuse, misapplication or other failure to completely follow nVent's instructions and warnings may cause product malfunction, property damage, serious bodily injury and death and/or void your warranty.

North America

+1.800.753.9221
Option 1 – Customer Care
Option 2 – Technical
Support

Europe

Netherlands:
+31 800-0200135
France:
+33 800 901 793

Europe

Germany:
800 1890272
Other Countries:
+31 13 5835404

APAC

Shanghai:
+ 86 21 2412 1618/19
Sydney:
+61 2 9751 8500



Our powerful portfolio of brands:

CADDY ERICO HOFFMAN ILSCO SCHROFF TRACHTE

