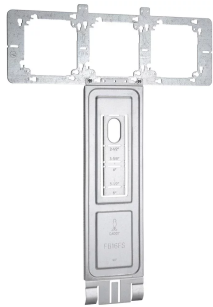


nVent CADDY Flat Rigid Box Bracket Floor Stand Assembly



FEATURES

Stamped with A- and B-side markings that allow mounting for all box types and configurations – no need for removal of screws – simply flip and it's ready to use

Bracket is completely flat, no offset

Floor stand positions boxes 18 1/2" from the floor for consistent placement

SPECIFICATIONS

Finish: Pregalvanized

Material: Steel

Table 1/1

Catalog Number	Stud Spacing	Side
F3AFS	8" - 16"	A
F3BFS	8" - 16"	B

WARNING

nVent products shall be installed and used only as indicated in nVent's product instruction sheets and training materials. Instruction sheets are available at www.nvent.com and from your nVent customer service representative. Improper installation, misuse, misapplication or other failure to completely follow nVent's instructions and warnings may cause product malfunction, property damage, serious bodily injury and death and/or void your warranty.

North America

+1.800.753.9221

Option 1 – Customer Care

Option 2 – Technical

Support

Europe

Netherlands:

+31 800-0200135

France:

+33 800 901 793

Europe

Germany:

800 1890272

Other Countries:

+31 13 5835404

APAC

Shanghai:

+ 86 21 2412 1618/19

Sydney:

+61 2 9751 8500



Our powerful portfolio of brands:

CADDY

ERICO

HOFFMAN

ILSCO

SCHROFF

TRACHTE

