

# nVent CADDY Cat HP J-Hook Tree, Flange Mount



## FEATURES

Easy installation to beam flanges

Provides optimal support for high-performance data cable, up to and including Cat 5e, Cat 6, Cat 6A, Cat 7 and fibre optic

Ready to use out of the box, saving installation time and labor

Requires no screws, rivets or special tools for assembly

Single- or double-sided tree configurations provide multiple J-Hooks with one structural attachment

Provides superior fill capacity and load rating over most other non-continuous cable support alternatives

Complies with EN 50174-2

Meets ISO®/IEC 14763-2, ANSI®/TIA 568 and ANSI®/TIA 569

## SPECIFICATIONS

**Finish:** Pregalvanized

**Material:** Steel

Table 1/2

Catalog Number	Type	Diameter (Ø)	Tiers	Flange Thickness (FT)	Height (H)	Width (W)
CAT32HPDFM2	Double Sided	2"	2	13/16" Max	10 1/4"	5 13/16"
CAT32HPDFM3	Double Sided	2"	3	13/16" Max	15 1/4"	5 13/16"

CatalogNumber	Type	Diameter (Ø)	Tiers	Flange Thickness (FT)	Height (H)	Width (W)
CAT32HPDFM4	Double Sided	2"	4	13/16" Max	20 1/4"	5 13/16"
CAT32HPSFM2	Single Sided	2"	2	13/16" Max	10 1/4"	3 5/16"
CAT32HPSFM3	Single Sided	2"	3	13/16" Max	15 1/4"	3 5/16"
CAT64HPDFM2	Double Sided	4"	2	13/16" Max	15 1/4"	10"
CAT64HPDFM3	Double Sided	4"	3	13/16" Max	22 3/4"	10"
CAT64HPSFM2	Single Sided	4"	2	13/16" Max	15 1/4"	5 7/16"
CAT64HPSFM3	Single Sided	4"	3	13/16" Max	22 3/4"	5 7/16"
CAT64HPSFM4	Single Sided	4"	4	13/16" Max	30 1/4"	5 7/16"

Table 2/2				
Catalog Number	A	B	Torque (TQ)	Static Load (F)
CAT32HPDFM2	1 1/8"	2"	5 ft·lbf	240lb
CAT32HPDFM3	1 1/8"	2"	8 ft·lbf	360lb
CAT32HPDFM4	1 1/8"	2"	8 ft·lbf	480lb
CAT32HPSFM2	1 1/8"	2"	5 ft·lbf	120lb
CAT32HPSFM3	1 1/8"	2"	5 ft·lbf	180lb
CAT64HPDFM2	1 1/8"	2"	5 ft·lbf	240lb
CAT64HPDFM3	1 1/8"	2"	8 ft·lbf	360lb
CAT64HPSFM2	1 1/8"	2"	5 ft·lbf	120lb
CAT64HPSFM3	1 1/8"	2"	5 ft·lbf	180lb

Catalog Number	A	B	Torque (TQ)	Static Load (F)
CAT64HPSFM4	1 1/8"	2"	5 ft·lbf	240lb

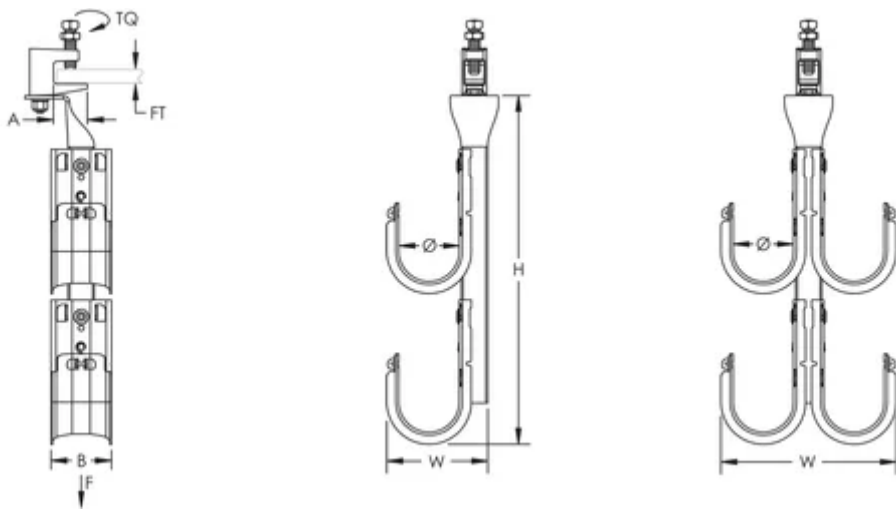
## ADDITIONAL PRODUCT DETAILS

Static loads represent maximum load limit of J-Hook tree. Static load limit of each J-Hook is 60 lb (270 N).

Setscrew must be tightened and torqued onto the sloped side of the I-beam.

Non-continuous supports may not exceed spacing of 5' (1.5 m) per TIA 569-C.9.7 and EN 50174-2.

## DIAGRAMS



## WARNING

nVent products shall be installed and used only as indicated in nVent's product instruction sheets and training materials. Instruction sheets are available at [www.nvent.com](http://www.nvent.com) and from your nVent customer service representative. Improper installation, misuse, misapplication or other failure to completely follow nVent's instructions and warnings may cause product malfunction, property damage, serious bodily injury and death and/or void your warranty.

#### North America

+1.800.753.9221

Option 1 – Customer Care

Option 2 – Technical

Support

#### Europe

Netherlands:

+31 800-0200135

France:

+33 800 901 793

#### Europe

Germany:

800 1890272

Other Countries:

+31 13 5835404

#### APAC

Shanghai:

+ 86 21 2412 1618/19

Sydney:

+61 2 9751 8500



Our powerful portfolio of brands:

**CADDY**

**ERICO**

**HOFFMAN**

**ILSCO**

**SCHROFF**

**TRACHTE**

