

# Multi-Function Clip



## CERTIFICATIONS



## FEATURES

Provides attachment of electrical boxes

Supports #10-24 and 1/4-20 (M6) threaded bridle rings

Instills more confidence installing conduit, MC/AC, and low voltage applications

## SPECIFICATIONS

**Finish:** nVent CADDY Armour

**Material:** Spring Steel

Table 1/2

Catalog Number	Rod Size (RS)	Wire Size	Flange Thickness (FT)	Hole Size (HS)	Screw Included	Screw Diameter (Sc)
4Z34	1/4", 5/16", 3/8"	#12 - #8	1/8" - 3/8"	1/4"	No	
4Z4S	1/4", 5/16", 3/8"	#12 - #8	1/8" - 3/8"		Yes	1/4"

CatalogNumber	Rod Size (RS)	Wire Size	Flange Thickness (FT)	Hole Size (HS)	Screw Included	ScrewDiameter (Sc)
8Z34	1/2", 5/8"	#1		1/4"	No	
8Z4S	1/2", 5/8"	#1			Yes	1/4"

Table 2/2

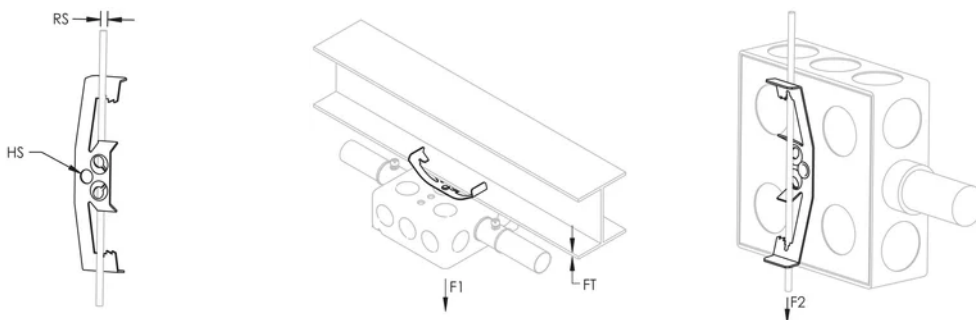
Catalog Number	Static Load 1 (F1)	Static Load 2 (F2)	Certifications
4Z34	25lb	20lb	ITB, UL, cUL
4Z4S	25lb	20lb	UL, cUL
8Z34		50lb	cUL, UL
8Z4S		50lb	UL, cUL

## ADDITIONAL PRODUCT DETAILS

NEC® 300.11 requires dedicated drop wire/rod and EC311.

4Z parts installed on 3/8" (M10) smooth rod in the F2 direction has a Static Load Rating of 15 lb (67 N).

## DIAGRAMS



## WARNING

nVent products shall be installed and used only as indicated in nVent's product instruction sheets and training materials. Instruction sheets are available at [www.nvent.com](http://www.nvent.com) and from your nVent customer service representative. Improper installation, misuse, misapplication or other failure to completely follow nVent's instructions and warnings may cause product malfunction, property damage, serious bodily injury and death and/or void your warranty.

#### North America

+1.800.753.9221

Option 1 – Customer Care

Option 2 – Technical

Support

#### Europe

Netherlands:

+31 800-0200135

France:

+33 800 901 793

#### Europe

Germany:

800 1890272

Other Countries:

+31 13 5835404

#### APAC

Shanghai:

+ 86 21 2412 1618/19

Sydney:

+61 2 9751 8500



Our powerful portfolio of brands:

**CADDY**

**ERICO**

**HOFFMAN**

**ILSCO**

**SCHROFF**

**TRACHTE**

