

# Independent Support Clip



## CERTIFICATIONS



## FEATURES

Provides a means of independent support of fixtures

No tools required for installation

Includes mounting hardware

## SPECIFICATIONS

**Finish:** nVent CADDY Armour

**Material:** Spring Steel

Table 1/2

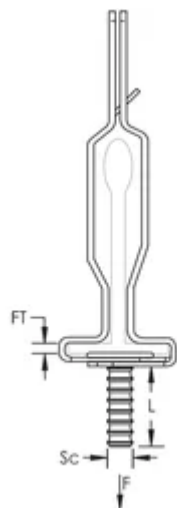
Catalog Number	T-Grid Size	Flange Thickness (FT)	Screw Diameter (Sc)	Screw Length (L)	Static Load (F)	Included Components
IDS	15/16"	1/16"	1/4"	9/16"	65lb	Washer-Wing Nut
IDS15	15/16"	1/16"	1/4"	1 1/2"	65lb	Washer-Wing Nut
IDS9	9/16"	1/16"	1/4"	9/16"	65lb	Washer-Wing Nut

CatalogNumber	T-Grid Size	Flange Thickness (FT)	ScrewDiameter (Sc)	Screw Length (L)	Static Load (F)	Included Components
IDS9LN	9/16"	1/16"	1/4"	9/16"	65lb	
IDS9T	9/16"	1/16"	8"	9/16"	65lb	Pal Nut
IDSLN	15/16"	1/16"	1/4"	9/16"	65lb	
IDST	15/16"	1/16"	8"	9/16"	65lb	Pal Nut
IDS95	9/16"	5/16"	1/4"	9/16"	65lb	Washer-Wing Nut
IDS95LN	9/16"	5/16"	1/4"	9/16"	65lb	
IDS95T	9/16"	5/16"	8"	9/16"	65lb	Pal Nut

Table 2/2

Catalog Number	Certifications
IDS	UL
IDS15	UL
IDS9	UL
IDS9LN	
IDS9T	
IDSLN	
IDST	
IDS95	UL
IDS95LN	
IDS95T	

DIAGRAMS



WARNING

nVent products shall be installed and used only as indicated in nVent's product instruction sheets and training materials. Instruction sheets are available at [www.nvent.com](http://www.nvent.com) and from your nVent customer service representative. Improper installation, misuse, misapplication or other failure to completely follow nVent's instructions and warnings may cause product malfunction, property damage, serious bodily injury and death and/or void your warranty.

North America

+1.800.753.9221  
Option 1 – Customer Care  
Option 2 – Technical  
Support

Europe

Netherlands:  
+31 800-0200135  
France:  
+33 800 901 793

Europe

Germany:  
800 1890272  
Other Countries:  
+31 13 5835404

APAC

Shanghai:  
+ 86 21 2412 1618/19  
Sydney:  
+61 2 9751 8500



Our powerful portfolio of brands:

CADDY   ERICO   HOFFMAN   ILSCO   SCHROFF   TRACHTE

