

H-MSM Conduit/Pipe to Flange Clip, Side Mount



CERTIFICATIONS



FEATURES

Supports conduit/pipe or cable from beam flanges

Snap close clip pivots a full 360°

Requires only a hammer to install

SPECIFICATIONS

Finish: nVent CADDY Armour

Material: Spring Steel

Table 1/2

Catalog Number	EMT Conduit Size	Rigid Conduit/Pipe Size	Flexible Conduit Size	MC/AC Cable Size	Outer Diameter (OD)	Flange Thickness (FT)
16M24SM	3/4", 1"	3/4", 1"			0.920" - 1.38"	1/8"
20M24SM	1 1/4"	1 1/4"			1.380" - 1.65"	1/8"

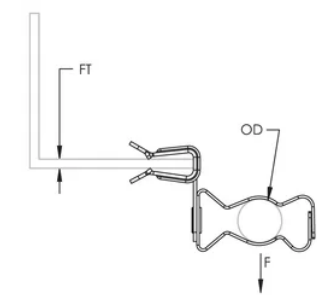
CatalogNumber	EMT Conduit Size	Rigid Conduit/Pipe Size	FlexibleConduit Size	MC/AC Cable Size	Outer Diameter (OD)	Flange Thickness (FT)
24M24SM	1 1/2"	1 1/2"			1.650" - 1.97"	1/8"
32M24SM	2"	2"			1.970" - 2.36"	1/8"
6M24SM		3/8"	3/8"	14-2 to 12-3	0.550" - 0.71"	1/8"
812M24SM	1/2", 3/4"	1/2", 3/4"			0.710" - 1.18"	1/8"
16M58SM	3/4", 1"	3/4", 1"			0.920" - 1.38"	5/16" - 1/2"
20M58SM	1 1/4"	1 1/4"			1.380" - 1.65"	5/16" - 1/2"
24M58SM	1 1/2"	1 1/2"			1.650" - 1.97"	5/16" - 1/2"
32M58SM	2"	2"			1.970" - 2.36"	5/16" - 1/2"
6M58SM		3/8"	3/8"	14-2 to 12-3	0.550" - 0.71"	5/16" - 1/2"
812M58SM	1/2", 3/4"	1/2", 3/4"			0.710" - 1.18"	5/16" - 1/2"
6M912SM		3/8"	3/8"	14-2 to 12-3	0.550" - 0.71"	9/16" - 3/4"
812M912SM	1/2", 3/4"	1/2", 3/4"			0.710" - 1.18"	9/16" - 3/4"
16M912SM	3/4", 1"	3/4", 1"			0.920" - 1.38"	9/16" - 3/4"
20M912SM	1 1/4"	1 1/4"			1.380" - 1.65"	9/16" - 3/4"
24M912SM	1 1/2"	1 1/2"			1.650" - 1.97"	9/16" - 3/4"
32M912SM	2"	2"			1.970" - 2.36"	9/16" - 3/4"

Table 2/2

Catalog Number	Static Load (F)	Certifications
----------------	-----------------	----------------

16M24SM	25lb	UL, cUL
20M24SM	25lb	cUL, UL
24M24SM	25lb	UL, cUL
32M24SM	25lb	UL, cUL
6M24SM	25lb	cUL, UL
812M24SM	25lb	cUL, ITB, UL
16M58SM	25lb	cUL, UL
20M58SM	25lb	
24M58SM	25lb	cUL, UL
32M58SM	25lb	UL, cUL
6M58SM	25lb	UL, cUL
812M58SM	25lb	UL, cUL, ITB
6M912SM	25lb	
812M912SM	25lb	cUL, ITB, UL
16M912SM	25lb	UL, cUL
20M912SM	25lb	
24M912SM	25lb	cUL, UL
32M912SM	25lb	cUL, UL

DIAGRAMS



WARNING

nVent products shall be installed and used only as indicated in nVent's product instruction sheets and training materials. Instruction sheets are available at www.nvent.com and from your nVent customer service representative. Improper installation, misuse, misapplication or other failure to completely follow nVent's instructions and warnings may cause product malfunction, property damage, serious bodily injury and death and/or void your warranty.

North America

+1.800.753.9221
Option 1 – Customer Care
Option 2 – Technical
Support

Europe

Netherlands:
+31 800-0200135
France:
+33 800 901 793

Europe

Germany:
800 1890272
Other Countries:
+31 13 5835404

APAC

Shanghai:
+ 86 21 2412 1618/19
Sydney:
+61 2 9751 8500



Our powerful portfolio of brands:

CADDY ERICO HOFFMAN ILSCO SCHROFF TRACHTE

