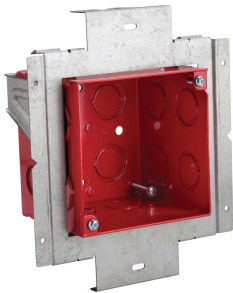


Fire Alarm Box with Mounting Plate



nVent CADDY Fire Alarm Box with Mounting Plate is a powder coated adjustable depth box for mounting fire alarm devices and strobes, designed for on-stud and between stud applications. With two screws inside the box, installers can easily adjust to different depths after installation of drywall or ceiling tiles.

Available in three different options, designed for a wide range of applications. The TB425FB is for 2.5" stud depths. The TB435FB is for stud depths 3 5/8" and greater. The four-square box with 1/2" offset design is a ready-to-install assembly for devices and strobes that do not require a mud ring.

The TB425FBS option is for stud depths 3 5/8" and greater. The four-square box with no offset design allows for a mud ring to be used for mounting smaller devices for both single- and double-layer drywall.

CERTIFICATIONS



FEATURES

Used for mounting fire alarm devices and strobes

Snap-on installation to Heavy Duty Telescoping Bracket allows for easy positioning along bracket

Can also be mounted directly to metal studs

For between stud applications use with Heavy Duty Telescoping Bracket

For overhead applications use with Heavy Duty Telescoping Bracket and T-Grid Clip (sold separately)

Easily adjusts for different depth wall and ceiling applications

Screws inside fire alarm box allow for adjustment after drywall or ceiling tile installation, providing confidence to adapt to any situation

Includes multiple knockouts on each side of the box

Design provides built in far side support for minimum stub depths

Powder coated inside and outside of box

Includes depth stamps marked directly on the product for easy positioning

Drop-wire attachment point

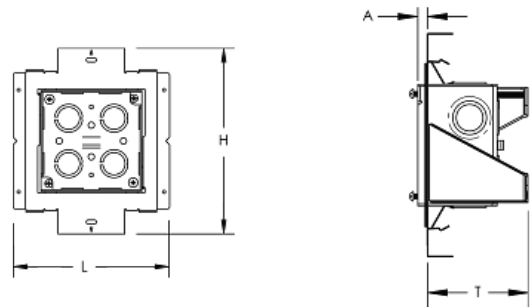
SPECIFICATIONS

Finish: Pregalvanized;Powder Coated
Material: Steel

Table 1/2						
Catalog Number	Color	Stud Wall Depth	Box Size	Box Depth	Knockout Sizes	Far Side Support Depth
TB435FB	Red	3.625"	4"	3 1/2"	1/2", 3/4"	3.62"
TB425FB	Red	2.5"	4"	2 1/2"	1/2", 3/4"	2 1/2"
TB425FBS		3.625"	4"	2 1/2"	1/2", 3/4"	3 1/2"

Table 2/2						
Catalog Number	A	Length (L)	Height (H)	Thickness (T)	Unit Weight	Certifications
TB435FB	0.020" - 0.05"	6.2"	7.36"	2.36"	1.4 lb	UL
TB425FB	1/2" - 1 1/4"	6.2"	7.36"	2.36"	1.4 lb	UL
TB425FBS	0.000" - 3/4"	6.2"	7.36"	3.36"	1.4 lb	

DIAGRAMS



WARNING

nVent products shall be installed and used only as indicated in nVent's product instruction sheets and training materials. Instruction sheets are available at www.nvent.com and from your nVent customer service representative. Improper installation, misuse, misapplication or other failure to completely follow nVent's instructions and warnings may cause product malfunction, property damage, serious bodily injury and death and/or void your warranty.

North America

+1.800.753.9221

Option 1 – Customer Care

Option 2 – Technical

Support

Europe

Netherlands:

+31 800-0200135

France:

+33 800 901 793

Europe

Germany:

800 1890272

Other Countries:

+31 13 5835404

APAC

Shanghai:

+ 86 21 2412 1618/19

Sydney:

+61 2 9751 8500



Our powerful portfolio of brands:

CADDY

ERICO

HOFFMAN

ILSCO

SCHROFF

TRACHTE

