

Conduit Trapeze CCT4



The nVent CADDY Conduit Trapeze CCT4 range is a fast and cost-effective method to install larger feeder circuits of conduit in overhead trapeze installations. The CCT4 series reduces installation time and material cost by eliminating the need for traditional fasteners, making it an ideal solution for contractors looking to maximize installation efficiency.

CERTIFICATIONS



FEATURES

Ideal for larger feeder circuits

Accommodates 1/2" threaded rod trapeze drops

Up to 25% material savings over traditional methods

Reduces installation time up to 50%

Complies with UL® 2239

SPECIFICATIONS

EMT Conduit Size:	4"
Rigid Conduit Size:	4"
Finish:	Pregalvanized
Material:	Steel

Table 1/2

Catalog Number	Number of Conduits	Rod Size (RS)	Thickness (T)	Hole Size 1 (HS1)	Hole Size 2 (HS2)	Hole Size 3 (HS3)
CCT4X12	2	1/2"	14ga	0.56"	0.28"	0.12"

CatalogNumber	Number of Conduits	Rod Size (RS)	Thickness (T)	Hole Size 1 (HS1)	Hole Size 2 (HS2)	Hole Size 3 (HS3)
CCT4X24	4	1/2"	14ga	0.56"	0.28"	0.12"
CCT4X36	6	1/2"	14ga	0.56"	0.28"	0.12"
CCT4X96	16	1/2"	14ga	0.56"	0.28"	0.12"

Table 2/2						
Catalog Number	Hole Size 4 (HS4)	Length 1 (L1)	Length 2 (L2)	Length 3 (L3)	Length 4 (L4)	Length (L)
CCT4X12	4.62"	12"	14"	6"	6"	14"
CCT4X24	4.62"	24"	26"	6"	6"	26"
CCT4X36	4.62"	36"	38"	6"	6"	38"
CCT4X96	4.62"	96"	98"	6"	6"	98"

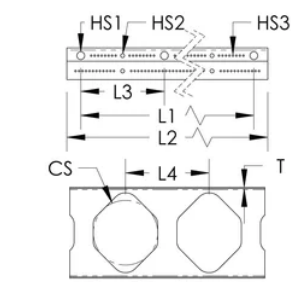
ADDITIONAL PRODUCT DETAILS

For 1/2" threaded rod trapeze drops, use washer or SN50.

The table contains maximum conduit size values.

UL Load Rating									
Orientation	Mounting Fastener	Fastener Spacing							
		6"	12"	18"	24"	30"	36"	42"	48"
Horizontal	1/2" Threaded Rod	600 lb	600 lb	550 lb	500 lb	475 lb	450 lb	425 lb	400 lb
Vertical	1/2" Fastener	600 lb	600 lb	-	-	-	-	-	-
Evenly Distributed Load Rating									
Horizontal	1/2"	-	650 lb	600 lb	550 lb	525 lb	500 lb	475 lb	450 lb

DIAGRAMS



WARNING

nVent products shall be installed and used only as indicated in nVent's product instruction sheets and training materials. Instruction sheets are available at www.nvent.com and from your nVent customer service representative. Improper installation, misuse, misapplication or other failure to completely follow nVent's instructions and warnings may cause product malfunction, property damage, serious bodily injury and death and/or void your warranty.

North America

+1.800.753.9221
Option 1 – Customer Care
Option 2 – Technical
Support

Europe

Netherlands:
+31 800-0200135
France:
+33 800 901 793

Europe

Germany:
800 1890272
Other Countries:
+31 13 5835404

APAC

Shanghai:
+ 86 21 2412 1618/19
Sydney:
+61 2 9751 8500



Our powerful portfolio of brands:

CADDY ERICO HOFFMAN ILSCO SCHROFF TRACHTE

