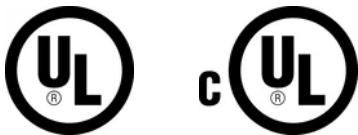


# Conduit Trapeze CCT125



The nVent CADDY Conduit Trapeze CCT125 range is a fast and cost-effective method to install larger branch circuits of conduit in overhead trapeze installations. The CCT125 series reduces installation time and material cost by eliminating the need for traditional fasteners, making it an ideal solution for contractors looking to maximize installation efficiency.

## CERTIFICATIONS



## FEATURES

Ideal for larger branch circuits

Accommodates 3/8" and 1/4" threaded rod trapeze drops

Up to 25% material savings over traditional methods

Reduces installation time up to 50%

Complies with UL® 2239

## SPECIFICATIONS

<b>EMT Conduit Size:</b>	1 1/4"
<b>Rigid Conduit Size:</b>	1 1/4"
<b>Finish:</b>	Pregalvanized
<b>Material:</b>	Steel

Table 1/2

Catalog Number	Number of Conduits	Rod Size (RS)	Thickness (T)	Hole Size 1 (HS1)	Hole Size 2 (HS2)	Hole Size 3 (HS3)
CCT125X12	6	3/8"	16ga	0.44"	0.28"	0.12"

CatalogNumber	Number of Conduits	Rod Size (RS)	Thickness (T)	Hole Size 1 (HS1)	Hole Size 2 (HS2)	Hole Size 3 (HS3)
CCT125X24	12	3/8"	16ga	0.44"	0.28"	0.12"
CCT125X36	18	3/8"	16ga	0.44"	0.28"	0.12"
CCT125X96	48	3/8"	16ga	0.44"	0.28"	0.12"

Table 2/2						
Catalog Number	Hole Size 4 (HS4)	Length 1 (L1)	Length 2 (L2)	Length 3 (L3)	Length 4 (L4)	Length (L)
CCT125X12	1.62"	12"	14"	2"	2"	14"
CCT125X24	1.62"	24"	26"	2"	2"	26"
CCT125X36	1.62"	36"	38"	2"	2"	38"
CCT125X96	1.62"	96"	98"	2"	2"	98"

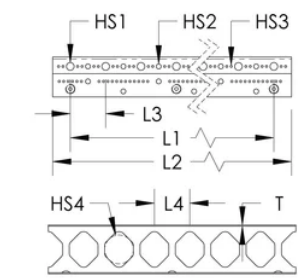
## ADDITIONAL PRODUCT DETAILS

For 3/8" and 1/4" threaded rod trapeze drops, use washer or SN25 for 1/4" threaded rod applications.

The table contains maximum conduit size values.

UL Load Rating									
Orientation	Mounting Fastener	Fastener Spacing							
		6"	12"	18"	24"	30"	36"	42"	48"
Horizontal	3/8" Threaded Rod	500 lb	500 lb	400 lb	300 lb	275 lb	250 lb	225 lb	200 lb
	3/16" Shot-Fire Pin	150 lb	125 lb	100 lb	-	-	-	-	-
Vertical	3/8" Fastener	600 lb	600 lb	-	-	-	-	-	-
Evenly Distributed Load Rating									
Horizontal	3/8"	-	750 lb	600 lb	475 lb	425 lb	375 lb	325 lb	300 lb

DIAGRAMS



WARNING

nVent products shall be installed and used only as indicated in nVent's product instruction sheets and training materials. Instruction sheets are available at [www.nvent.com](http://www.nvent.com) and from your nVent customer service representative. Improper installation, misuse, misapplication or other failure to completely follow nVent's instructions and warnings may cause product malfunction, property damage, serious bodily injury and death and/or void your warranty.

North America

+1.800.753.9221  
Option 1 – Customer Care  
Option 2 – Technical  
Support

Europe

Netherlands:  
+31 800-0200135  
France:  
+33 800 901 793

Europe

Germany:  
800 1890272  
Other Countries:  
+31 13 5835404

APAC

Shanghai:  
+ 86 21 2412 1618/19  
Sydney:  
+61 2 9751 8500



Our powerful portfolio of brands:

CADDY ERICO HOFFMAN ILSCO SCHROFF TRACHTE

