

# Conduit Trapeze CCT1



The nVent CADDY Conduit Trapeze CCT1 range is a fast and cost-effective method to install smaller branch circuits of conduit in overhead trapeze installations. The CCT1 series reduces installation time and material cost by eliminating the need for traditional fasteners, making it an ideal solution for contractors looking to maximize installation efficiency.

## CERTIFICATIONS



## FEATURES

Ideal for smaller branch runs

Shot fire flange for direct attachment to ceiling/deck

Accommodates 3/8" and 1/4" threaded rod trapeze drops

Up to 25% material savings over traditional methods

Reduces installation time up to 50%

Complies with UL® 2239

## SPECIFICATIONS

**EMT Conduit Size:** 1"

**Rigid Conduit Size:** 1"

**Finish:** Pregalvanized

**Material:** Steel

Table 1/2

| Catalog Number | Number of Conduits | Rod Size (RS) | Thickness (T) | Hole Size 1 (HS1) | Hole Size 2 (HS2) | Hole Size 3 (HS3) |
|----------------|--------------------|---------------|---------------|-------------------|-------------------|-------------------|
|----------------|--------------------|---------------|---------------|-------------------|-------------------|-------------------|

|         |    |      |      |       |       |       |
|---------|----|------|------|-------|-------|-------|
| CCT1X15 | 8  | 3/8" | 16ga | 0.44" | 0.28" | 0.12" |
| CCT1X30 | 16 | 3/8" | 16ga | 0.44" | 0.28" | 0.12" |
| CCT1X45 | 24 | 3/8" | 16ga | 0.44" | 0.28" | 0.12" |
| CCT1X90 | 48 | 3/8" | 16ga | 0.44" | 0.28" | 0.12" |

| Table 2/2      |                   |               |               |               |               |            |
|----------------|-------------------|---------------|---------------|---------------|---------------|------------|
| Catalog Number | Hole Size 4 (HS4) | Length 1 (L1) | Length 2 (L2) | Length 3 (L3) | Length 4 (L4) | Length (L) |
| CCT1X15        | 1.38"             | 14 1/2"       | 16.31"        | 1.81"         | 1.81"         | 16.3"      |
| CCT1X30        | 1.38"             | 29"           | 30.81"        | 1.81"         | 1.81"         | 30.8"      |
| CCT1X45        | 1.38"             | 43 1/2"       | 45.31"        | 1.81"         | 1.81"         | 45.3"      |
| CCT1X90        | 1.38"             | 87"           | 88.81"        | 1.81"         | 1.81"         | 88.8"      |

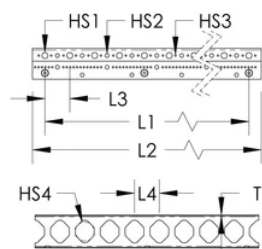
## ADDITIONAL PRODUCT DETAILS

For 3/8" and 1/4" threaded rod trapeze drops, use washer or SN25 for 1/4" threaded rod applications.

The table contains maximum conduit size values.

| UL Load Rating                 |                     |                  |        |        |        |        |        |        |
|--------------------------------|---------------------|------------------|--------|--------|--------|--------|--------|--------|
| Orientation                    | Mounting Fastener   | Fastener Spacing |        |        |        |        |        |        |
|                                |                     | 7.25"            | 14.5"  | 21.75" | 29"    | 36.25" | 43.5"  | 50.75" |
| Horizontal                     | 3/8" Threaded Rod   | 500 lb           | 500 lb | 400 lb | 300 lb | 266 lb | 233 lb | 200 lb |
|                                | 3/16" Shot-Fire Pin | 150 lb           | 125 lb | -      | -      | -      | -      | -      |
| Vertical                       | 3/8" Fastener       | 600 lb           | 600 lb | -      | -      | -      | -      | -      |
| Evenly Distributed Load Rating |                     |                  |        |        |        |        |        |        |
| Horizontal                     | 3/8"                | -                | 750 lb | 600 lb | 475 lb | 425 lb | 375 lb | 300 lb |

DIAGRAMS



WARNING

nVent products shall be installed and used only as indicated in nVent's product instruction sheets and training materials. Instruction sheets are available at [www.nvent.com](http://www.nvent.com) and from your nVent customer service representative. Improper installation, misuse, misapplication or other failure to completely follow nVent's instructions and warnings may cause product malfunction, property damage, serious bodily injury and death and/or void your warranty.

North America

+1.800.753.9221  
Option 1 – Customer Care  
Option 2 – Technical  
Support

Europe

Netherlands:  
+31 800-0200135  
France:  
+33 800 901 793

Europe

Germany:  
800 1890272  
Other Countries:  
+31 13 5835404

APAC

Shanghai:  
+ 86 21 2412 1618/19  
Sydney:  
+61 2 9751 8500



Our powerful portfolio of brands:

CADDY ERICO HOFFMAN ILSCO SCHROFF TRACHTE

