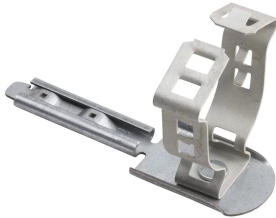


BCSP Snap Close Conduit Clamp



CERTIFICATIONS



FEATURES

Provides tool-free first means of securement for conduit when used with box/conduit securement platform

Innovative design eliminates loose hardware, simplifying installation

Eliminates need for offset bending conduit

SPECIFICATIONS

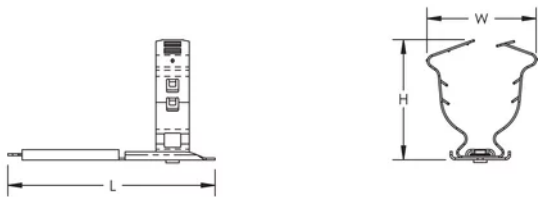
Table 1/2

Catalog Number	Material	Finish	EMT Conduit Size	Rigid Conduit Size	Height (H)	Length (L)
BCSPC16M	Steel	Pregalvanized	3/4", 1"	3/4", 1"	2.25 Min	3.88"

Table 2/2

Catalog Number	Length	Width (W)
BCSPC16M	3.88" Min	2.06 Min

DIAGRAMS



WARNING

nVent products shall be installed and used only as indicated in nVent's product instruction sheets and training materials. Instruction sheets are available at www.nvent.com and from your nVent customer service representative. Improper installation, misuse, misapplication or other failure to completely follow nVent's instructions and warnings may cause product malfunction, property damage, serious bodily injury and death and/or void your warranty.

North America

+1.800.753.9221
Option 1 – Customer Care
Option 2 – Technical
Support

Europe

Netherlands:
+31 800-0200135
France:
+33 800 901 793

Europe

Germany:
800 1890272
Other Countries:
+31 13 5835404

APAC

Shanghai:
+ 86 21 2412 1618/19
Sydney:
+61 2 9751 8500



Our powerful portfolio of brands:

CADDY ERICO HOFFMAN ILSCO SCHROFF TRACHTE

