

# 610 One-Rod Roller Hanger



## FEATURES

Suspend pipe from a single hanger rod where longitudinal movement may occur in the pipe due to expansion or contraction

Conforms with Federal Specification WW-H-171 (Type 44), Manufacturers Standardization Society ANSI®/MSS-SP-58 (Type 43)

## SPECIFICATIONS

**Material:** Steel;Cast Iron

**Finish:** Hot-Dip Galvanized;Electrogalvanized

Table 1/1

Catalog Number	Pipe Size	Rod Size (RS)	A	B	Static Load (F)
6100400HD	4"	5/8"	7 1/2"	2 3/4"	475lbf
6100500HD	5"	5/8"	8 5/8"	3 1/2"	685lbf
6100600HD	6"	3/4"	10 1/4"	4"	780lbf
6100800HD	8"	7/8"	12 3/4"	5 1/8"	780lbf
6101000HD	10"	7/8"	15"	6 3/8"	965lbf
6101200HD	12"	7/8"	17 3/8"	7 1/2"	1200lbf

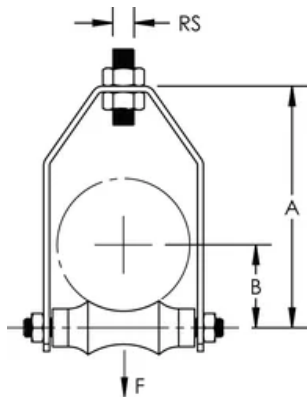
Catalog Number	Pipe Size	Rod Size (RS)	A	B	Static Load (F)
6101400HD	14"	1"	18 7/8"	8 3/8"	1200lbf
6101600HD	16"	1"	20 3/4"	9 1/2"	1200lbf
6101800HD	18"	1"	23 3/4"	10 1/2"	1400lbf
6102000HD	20"	1 1/4"	26"	11 5/8"	1600lbf
6102400HD	24"	1 1/4"	31"	13 13/16"	1600lbf

## ADDITIONAL PRODUCT DETAILS

Yoke and axle are carbon steel (electrogalvanized) and roll is cast iron (hot-dip galvanized).

Install in accordance with applicable code.

## DIAGRAMS



## WARNING

nVent products shall be installed and used only as indicated in nVent's product instruction sheets and training materials. Instruction sheets are available at [www.nvent.com](http://www.nvent.com) and from your nVent customer service representative. Improper installation, misuse, misapplication or other failure to completely follow nVent's instructions and warnings may cause product malfunction, property damage, serious bodily injury and death and/or void your warranty.

#### North America

+1.800.753.9221

Option 1 – Customer Care

Option 2 – Technical

Support

#### Europe

Netherlands:

+31 800-0200135

France:

+33 800 901 793

#### Europe

Germany:

800 1890272

Other Countries:

+31 13 5835404

#### APAC

Shanghai:

+ 86 21 2412 1618/19

Sydney:

+61 2 9751 8500



Our powerful portfolio of brands:

**CADDY**

**ERICO**

**HOFFMAN**

**ILSCO**

**SCHROFF**

**TRACHTE**

