

# 605 Two-Rod Roller Hanger



## FEATURES

Suspends pipe from two rods where longitudinal movement in pipe may occur due to expansion or contraction

Conforms with Federal Specification WW-H-171 (Type 42), Manufacturers Standardization Society ANSI®/MSS-SP-58 (Type 41)

## SPECIFICATIONS

**Material:** Steel;Cast Iron

**Finish:** Hot-Dip Galvanized;Electrogalvanized

Table 1/1

Catalog Number	Pipe Size	Rod Size (RS)	A	B	Static Load (F)
6050600HD	6"	3/4"	4"	9 7/8"	
6050800HD	8"	7/8"	5 1/8"	12"	1350lbf
6051000HD	10"	7/8"	6 3/8"	14"	1730lbf
6051200HD	12"	7/8"	7 1/2"	16 1/2"	2400lbf
6051800HD	18"	1"	10 1/2"	22 3/8"	4200lbf
6052000HD	20"	1 1/4"	11 5/8"	24 1/2"	4550lbf

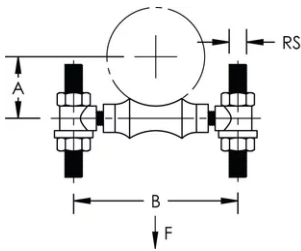
Catalog Number	Pipe Size	Rod Size (RS)	A	B	Static Load (F)
6052400HD	24"	1 1/2"	14"	28 13/16"	6160lbf

## ADDITIONAL PRODUCT DETAILS

Roll and sockets are hot-dip galvanized cast iron and axle is electrogalvanized carbon steel.

Install in accordance with applicable code.

## DIAGRAMS



## WARNING

nVent products shall be installed and used only as indicated in nVent's product instruction sheets and training materials. Instruction sheets are available at [www.nvent.com](http://www.nvent.com) and from your nVent customer service representative. Improper installation, misuse, misapplication or other failure to completely follow nVent's instructions and warnings may cause product malfunction, property damage, serious bodily injury and death and/or void your warranty.

### North America

+1.800.753.9221  
Option 1 – Customer Care  
Option 2 – Technical  
Support

### Europe

Netherlands:  
+31 800-0200135  
France:  
+33 800 901 793

### Europe

Germany:  
800 1890272  
Other Countries:  
+31 13 5835404

### APAC

Shanghai:  
+ 86 21 2412 1618/19  
Sydney:  
+61 2 9751 8500



Our powerful portfolio of brands:

**CADDY ERICO HOFFMAN ILSCO SCHROFF TRACHTE**

