

365 Steel Wall or Ceiling Plate



FEATURES

Structural attachment to support hanger rod from a ceiling or a wall

SPECIFICATIONS

Material: Steel

Table 1/2

Catalog Number	Finish	Rod Size (RS)	Hole Size (HS)	A	B	Pipe Size
3650037EG	Electrogalvanized	3/8"	5/16"	5/16"	2 1/4"	2" Max
3650037PL	Plain	3/8"	5/16"	5/16"	2 1/4"	2" Max

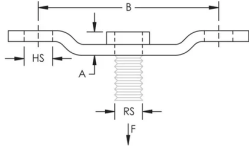
Table 2/2

Catalog Number	Static Load (F)
3650037EG	100lbf
3650037PL	100lbf

ADDITIONAL PRODUCT DETAILS

Follow fastener manufacturer's recommended shear and pull-out strength when fastening to the structure. Fastener not included.

DIAGRAMS



WARNING

nVent products shall be installed and used only as indicated in nVent's product instruction sheets and training materials. Instruction sheets are available at www.nvent.com and from your nVent customer service representative. Improper installation, misuse, misapplication or other failure to completely follow nVent's instructions and warnings may cause product malfunction, property damage, serious bodily injury and death and/or void your warranty.

North America

+1.800.753.9221
Option 1 – Customer Care
Option 2 – Technical
Support

Europe

Netherlands:
+31 800-0200135
France:
+33 800 901 793

Europe

Germany:
800 1890272
Other Countries:
+31 13 5835404

APAC

Shanghai:
+ 86 21 2412 1618/19
Sydney:
+61 2 9751 8500



Our powerful portfolio of brands:

CADDY ERICO HOFFMAN ILSCO SCHROFF TRACHTE

