

352 Standard Duty Welded Wall Bracket



FEATURES

Wall attachment to support or suspend static piping

Conforms with Federal Specification WW-H-171 (Type 32), Manufacturers Standardization Society ANSI®/MSS-SP-58 (Type 32)

SPECIFICATIONS

Finish: Plain

Material: Steel

Table 1/2

Catalog Number	Height (H)	Width (W)	A	B	C	D
3520100PL	18"	4"	15 1/2"	1 1/4"	1 1/4"	12"
3520200PL	24"	4 1/2"	21 1/2"	1 1/4"	1 1/4"	18"
3520300PL	30"	5"	27 1/2"	1 1/4"	1 1/4"	24"

Table 2/2

Catalog Number	E	Hole Size (HS)	Static Load (F)
3520100PL	1"	13/16"	1500lbf

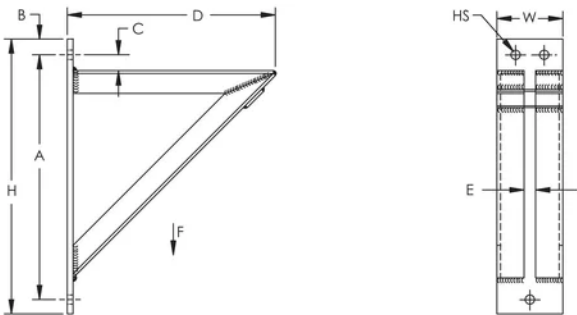
Catalog Number	E	Hole Size (HS)	Static Load (F)
3520200PL	1"	13/16"	1500lbf
3520300PL	1"	13/16"	1500lbf

ADDITIONAL PRODUCT DETAILS

Follow fastener manufacturer’s recommended shear and pull-out strength when fastening to the structure. Fastener not included.

Install in accordance with applicable code.

DIAGRAMS



WARNING

nVent products shall be installed and used only as indicated in nVent's product instruction sheets and training materials. Instruction sheets are available at www.nvent.com and from your nVent customer service representative. Improper installation, misuse, misapplication or other failure to completely follow nVent's instructions and warnings may cause product malfunction, property damage, serious bodily injury and death and/or void your warranty.

North America

+1.800.753.9221
Option 1 – Customer Care
Option 2 – Technical Support

Europe

Netherlands:
+31 800-0200135
France:
+33 800 901 793

Europe

Germany:
800 1890272
Other Countries:
+31 13 5835404

APAC

Shanghai:
+ 86 21 2412 1618/19
Sydney:
+61 2 9751 8500



Our powerful portfolio of brands:

CADDY ERICO HOFFMAN ILSCO SCHROFF TRACHTE

