

105 Stainless Steel Loop Hanger



FEATURES

Recommended for the suspension of stationary stainless steel pipe lines

Conforms with Federal Specification WW-H-171 (Type 7), Manufacturers Standardization Society (MSS) SP-58 (Type 7)

SPECIFICATIONS

Material: Stainless Steel 304 (EN 1.4301)

Table 1/2

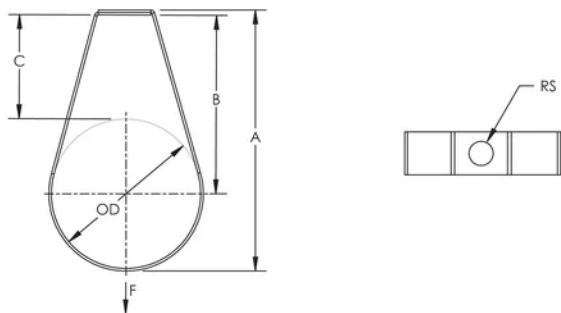
Catalog Number	Pipe Size	Outer Diameter (OD)	Rod Size (RS)	A	B	C
1050050S4	1/2"	0.68"	3/8"	2 7/8"	2 5/16"	1 7/8"
1050075S4	3/4"	1.05"	3/8"	3 1/8"	2 3/8"	1 7/8"
1050100S4	1"	1.31"	3/8"	3 3/8"	2 9/16"	1 7/8"
1050125S4	1 1/4" Min	1.66"	3/8"	3 3/4"	2 11/16"	1 7/8"
1050150S4	1 1/2"	1.9"	3/8"	4.06"	2 15/16"	2"
1050200S4	2" Min	2 3/8"	3/8"	4 7/16"	3 1/16"	1 7/8"

CatalogNumber	Pipe Size	Outer Diameter (OD)	Rod Size (RS)	A	B	C
1050250S4	2 1/2"	2 7/8"	1/2"	4 15/16"	3 5/16"	1 7/8"
1050300S4	3"	3 1/2"	1/2"	5 9/16"	3 5/8"	1 7/8"
1050400S4	4"	4 1/2"	5/8"	6 9/16"	4 1/8"	1 7/8"
1050600S4	6"	6 5/8"	3/4"	8 3/4"	5 1/16"	1 3/4"
1050800S4	8"	8 5/8"	3/4"	10 3/4"	6 1/16"	1 3/4"

Table 2/2

Catalog Number	Static Load (F)
1050050S4	600lbf
1050075S4	600lbf
1050100S4	600lbf
1050125S4	600lbf
1050150S4	600lbf
1050200S4	600lbf
1050250S4	970lbf
1050300S4	970lbf
1050400S4	1250lbf
1050600S4	1600lbf
1050800S4	1800lbf

DIAGRAMS



WARNING

nVent products shall be installed and used only as indicated in nVent's product instruction sheets and training materials. Instruction sheets are available at www.nvent.com and from your nVent customer service representative. Improper installation, misuse, misapplication or other failure to completely follow nVent's instructions and warnings may cause product malfunction, property damage, serious bodily injury and death and/or void your warranty.

North America

+1.800.753.9221
Option 1 – Customer Care
Option 2 – Technical
Support

Europe

Netherlands:
+31 800-0200135
France:
+33 800 901 793

Europe

Germany:
800 1890272
Other Countries:
+31 13 5835404

APAC

Shanghai:
+ 86 21 2412 1618/19
Sydney:
+61 2 9751 8500



Our powerful portfolio of brands:

CADDY ERICO HOFFMAN ILSCO SCHROFF TRACHTE

