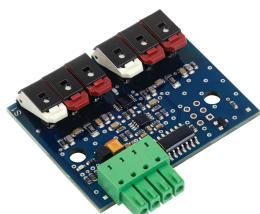


Elexant 450c Plug-In Sensor Module



nVent RAYCHEM Elexant 450c plug-in is a sensor module to allow replacement of old controls without stripping insulation and replacing sensors.

SPECIFICATIONS

Table 1/1

Catalog Number	Item Name	Sensor Type	Temperature Sensor Input Quantity	Measuring Range
1244-022442	SM-PT100-2	PT100	2	-100 to 200 °C

WARNING

nVent products shall be installed and used only as indicated in nVent's product instruction sheets and training materials. Instruction sheets are available at www.nvent.com and from your nVent customer service representative. Improper installation, misuse, misapplication or other failure to completely follow nVent's instructions and warnings may cause product malfunction, property damage, serious bodily injury and death and/or void your warranty.

North America

Tel +1.800.545.6258

Fax +1.800.527.5703

thermal.info@nvent.com

**Europe, Middle East,
Africa**

Tel +32.16.213.511

Fax +32.16.213.604

thermal.info@nvent.com

Asia Pacific

Tel +86.21.2412.1688

Fax +86.21.5426.3167

cn.thermal.info@nvent.com

Latin America

Tel +1.713.868.4800

Fax +1.713.868.2333

thermal.info@nvent.com

Our powerful portfolio of brands:

RAYCHEM PYROTENAX TRACER NUHEAT