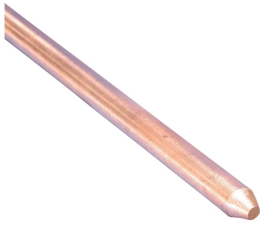


Solid Copper Ground Rod, Pointed

Power Utilities



CERTIFICATIONS



FEATURES

Solid copper ground rods made of high conductive hard drawn bare copper

SPECIFICATIONS

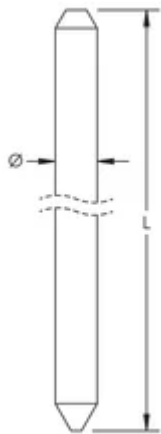
Table 1/1

Catalog Number	Tensile Strength	Ground Rod Diameter, Nominal	Ground Rod Diameter, Actual (Ø)	Unit Weight
LPC700	290 MPa Min	1/2"	12.7 mm	2.760 kg

ADDITIONAL PRODUCT DETAILS

Due to the inherent softness of the copper material, special consideration should be given when driving this product into the soil.

DIAGRAMS



WARNING

nVent products shall be installed and used only as indicated in nVent's product instruction sheets and training materials. Instruction sheets are available at www.nvent.com and from your nVent customer service representative. Improper installation, misuse, misapplication or other failure to completely follow nVent's instructions and warnings may cause product malfunction, property damage, serious bodily injury and death and/or void your warranty.



Our powerful portfolio of brands:

CADDY ERICO HOFFMAN ILSCO SCHROFF TRACHTE