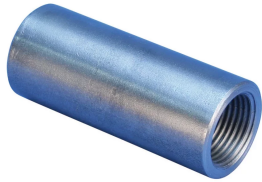


# A2 Standard Coupler, Stainless Steel



Stainless steel couplers are specified whenever corrosive environmental conditions combine with the need for high load-bearing strength. nVent LENTON stainless steel couplers are commonly used when the construction materials may come into contact with de-icing salts, salt water or marine environments. Typical applications include bridges and bridge decks.

## FEATURES

Designed to splice the same diameter bars where the second bar can be rotated and is not restricted in its axial direction

Slim design maintains concrete cover

Installs quickly and easily

Duplex 2205 stainless steel provides a unique combination of strength and corrosion resistance

## SPECIFICATIONS

**Finish:** Plain

**Material:** Stainless Steel Duplex 2205 (EN 1.4462)

Table 1/2

Catalog Number	Rebar Size, Metric	Rebar Size, US	Rebar Size, Canada	Diameter (Ø)	Length (L)	Bar Depth (BD)
EL12A2SSN	12 mm	#4	10M	25 mm	41mm	15mm
EL16A2SSN	16 mm	#5	15M	25 mm	56mm	22mm
EL20A2SSN	20 mm	#6	20M	38 mm	71mm	28mm
EL22A2SSN	22 mm	#7		38 mm	80mm	32mm
EL28A2SSN	28 mm	#9	30M	38 mm	91mm	38mm

CatalogNumber	Rebar Size, Metric	Rebar Size, US	Rebar Size, Canada	Diameter (Ø)	Length (L)	Bar Depth (BD)
EL25A2SSN	25 mm	#8	25M	38 mm	85mm	34mm
EL36A2SSN	36 mm	#11	35M	48 mm	101mm	43mm
EL32A2SSN	32 mm	#10		48 mm	96mm	40mm

Table 2/2

Catalog Number	Bar Gap (BG)	Unit Weight
EL12A2SSN	11mm	0.14 kg
EL16A2SSN	12mm	0.16 kg
EL20A2SSN	15mm	0.25 kg
EL22A2SSN	16mm	0.34 kg
EL28A2SSN	15mm	0.49 kg
EL25A2SSN	17mm	0.53 kg
EL36A2SSN	15mm	1.01 kg
EL32A2SSN	16mm	0.82 kg

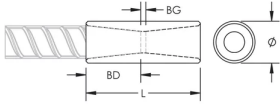
**Designed to Meet:** AASHTO;ABNT NBR 8548:1984;ACI 318 Type 1 (125% Specified Yield);ACI 318 Type 2 (Specified Tensile);ACI 349;ACI 359;AS3600

## ADDITIONAL PRODUCT DETAILS

Bar dimensions and weights listed may vary by region. Coupler sizes not shown may be available by special order. Contact your nVent LENTON representative for more information.

## DIAGRAMS

---



## WARNING

---

nVent products shall be installed and used only as indicated in nVent's product instruction sheets and training materials. Instruction sheets are available at [www.nvent.com](http://www.nvent.com) and from your nVent customer service representative. Improper installation, misuse, misapplication or other failure to completely follow nVent's instructions and warnings may cause product malfunction, property damage, serious bodily injury and death and/or void your warranty.

### North America

+1.800.753.9221

Option 1 – Customer Care

Option 2 – Technical

Support

### Europe

Netherlands:

+31 800-0200135

France:

+33 800 901 793

### Europe

Germany:

800 1890272

Other Countries:

+31 13 5835404

### APAC

Shanghai:

+ 86 21 2412 1618/19

Sydney:

+61 2 9751 8500



Our powerful portfolio of brands:

**CADDY**

**ERICO**

**HOFFMAN**

**ILSCO**

**SCHROFF**

**TRACHTE**