

SCH2 Single Piece Strut Clamp for Cable/Conduit



CERTIFICATIONS



FEATURES

One-piece cable/conduit clamp with protective boot

No screws or bolts to drop

Requires only a screwdriver or nutdriver for installation

Fits into open side of strut channel

FM® Specification Tested (from 1/2" to 4" of EMT Conduit Size)

SPECIFICATIONS

Finish: Electrogalvanized

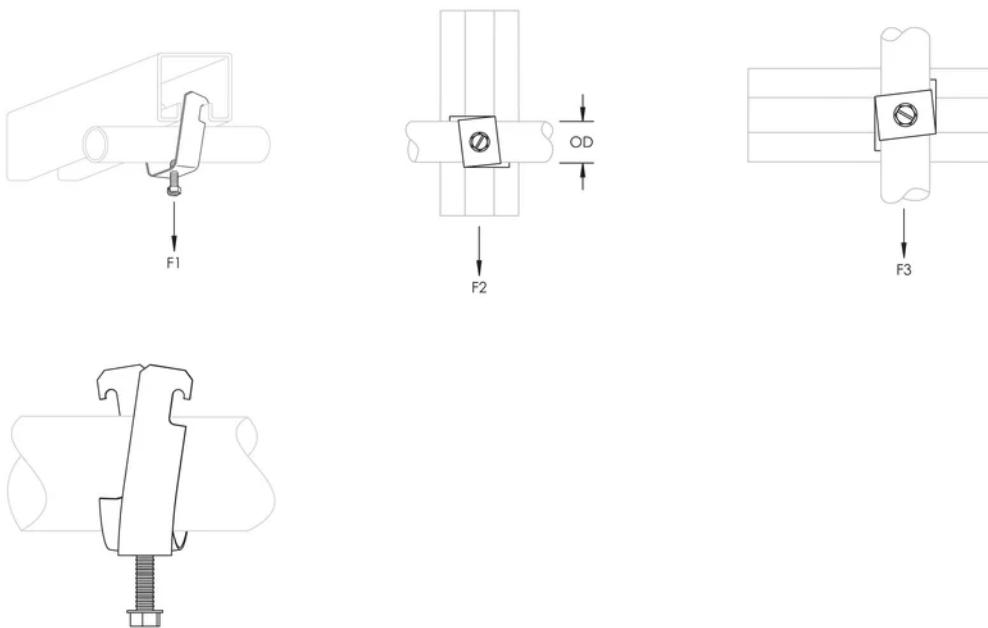
Material: Steel

Table 1/1

Catalog Number	Outer Diameter (OD)	Static Load 1 (F1)	Ultimate Static Load 2 (F2)	Ultimate Static Load 3 (F3)
SCH8B	8.6 - 18 mm	880N	334N	222N

Catalog Number	Outer Diameter (OD)	Static Load 1 (F1)	Ultimate Static Load 2 (F2)	Ultimate Static Load 3 (F3)
SCH12B	14.5 - 23.4 mm	880N	334N	222N
SCH16B	18.3 - 29.5 mm	880N	334N	222N
SCH20B	25.4 - 38.4 mm	880N	334N	222N
SCH24B	31.8 - 44.2 mm	1550N	334N	222N
SCH32B	44.2 - 55.9 mm	1550N	334N	222N
SCH40B	50.8 - 60.5 mm	1550N	334N	222N
SCH48B	60.5 - 73.2 mm	1550N	334N	222N
SCH56B	69.1 - 88.9 mm	1550N	334N	222N
SCH64B	82.6 - 101.6 mm	1550N	334N	222N
SCH72B	97.8 - 114.3 mm	1550N	334N	222N

DIAGRAMS



WARNING

nVent products shall be installed and used only as indicated in nVent's product instruction sheets and training materials. Instruction sheets are available at www.nvent.com and from your nVent customer service representative. Improper installation, misuse, misapplication or other failure to completely follow nVent's instructions and warnings may cause product malfunction, property damage, serious bodily injury and death and/or void your warranty.

North America

+1.800.753.9221
Option 1 – Customer Care
Option 2 – Technical
Support

Europe

Netherlands:
+31 800-0200135
France:
+33 800 901 793

Europe

Germany:
800 1890272
Other Countries:
+31 13 5835404

APAC

Shanghai:
+ 86 21 2412 1618/19
Sydney:
+61 2 9751 8500



Our powerful portfolio of brands:

CADDY ERICO HOFFMAN ILSCO SCHROFF TRACHTE

