

# nVent CADDY Cat HP J-Hook Tree, Flange Mount



## FEATURES

Easy installation to beam flanges

Provides optimal support for high-performance data cable, up to and including Cat 5e, Cat 6, Cat 6A, Cat 7 and fibre optic

Ready to use out of the box, saving installation time and labor

Requires no screws, rivets or special tools for assembly

Single- or double-sided tree configurations provide multiple J-Hooks with one structural attachment

Provides superior fill capacity and load rating over most other non-continuous cable support alternatives

Complies with EN 50174-2

Meets ISO®/IEC 14763-2, ANSI®/TIA 568 and ANSI®/TIA 569

## SPECIFICATIONS

**Finish:** Pregalvanized

**Material:** Steel

Table 1/2

Catalog Number	Article Number	Type	Diameter (Ø)	Tiers	Flange Thickness (FT)	Height (H)
CAT32HPDFM2	181036	Double Sided	50 mm	2	20.6 mm Max	260 mm
CAT32HPDFM3	181037	Double Sided	50 mm	3	20.6 mm Max	387 mm

CatalogNumber	Article Number	Type	Diameter (Ø)	Tiers	Flange Thickness (FT)	Height (H)
CAT32HPDFM4	181038	Double Sided	50 mm	4	20.6 mm Max	514 mm
CAT32HPSFM2	181033	Single Sided	50 mm	2	20.6 mm Max	260 mm
CAT32HPSFM3	181034	Single Sided	50 mm	3	20.6 mm Max	387 mm
CAT32HPSFM4	181035	Single Sided	50 mm	4	20.6 mm Max	768 mm
CAT64HPDFM2	181043	Double Sided	100 mm	2	20.6 mm Max	387 mm
CAT64HPDFM3	181044	Double Sided	100 mm	3	20.6 mm Max	578 mm
CAT64HPDFM4	181045	Double Sided	100 mm	4	20.6 mm Max	768 mm
CAT64HPSFM2	181039	Single Sided	100 mm	2	20.6 mm Max	387 mm
CAT64HPSFM3	181041	Single Sided	100 mm	3	20.6 mm Max	578 mm
CAT64HPSFM4	181042	Single Sided	100 mm	4	20.6 mm Max	768 mm

Table 2/2

Catalog Number	Article Number	Width (W)	A	B	Torque (TQ)	Static Load
CAT32HPDFM2	181036	148 mm	3.17 mm	50 mm	7 N·m	1068N
CAT32HPDFM3	181037	148 mm	3.17 mm	50 mm	11 N·m	1600N
CAT32HPDFM4	181038	148 mm	3.17 mm	50 mm	11 N·m	2130N
CAT32HPSFM2	181033	84.8 mm	28.5 mm	50 mm	7 N·m	530N
CAT32HPSFM3	181034	84.8 mm	28.5 mm	50 mm	7 N·m	800N
CAT32HPSFM4	181035	84.8 mm	28.5 mm	50 mm	7 N·m	1068N

CatalogNumber	Article Number	Width (W)	A	B	Torque (TQ)	Static Load
CAT64HPDFM2	181043	254 mm	3.17 mm	50 mm	7 N·m	1068N
CAT64HPDFM3	181044	254 mm	3.17 mm	50 mm	11 N·m	1600N
CAT64HPDFM4	181045	254 mm	3.17 mm	50 mm	11 N·m	2130N
CAT64HPSFM2	181039	138 mm	28.5 mm	50 mm	7 N·m	530N
CAT64HPSFM3	181041	138 mm	28.5 mm	50 mm	7 N·m	800N
CAT64HPSFM4	181042	138 mm	28.5 mm	50 mm	7 N·m	1068N

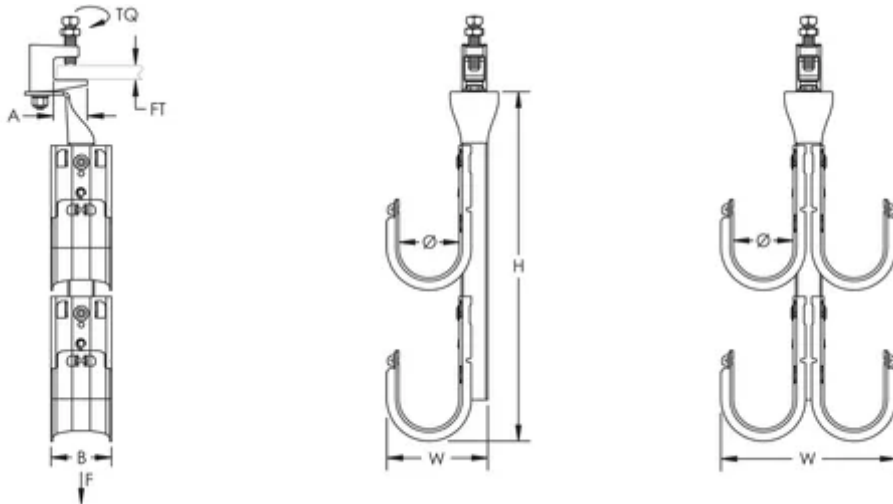
## ADDITIONAL PRODUCT DETAILS

Static loads represent maximum load limit of J-Hook tree. Static load limit of each J-Hook is 60 lb (270 N).

Setscrew must be tightened and torqued onto the sloped side of the I-beam.

Non-continuous supports may not exceed spacing of 5' (1.5 m) per TIA 569-C.9.7 and EN 50174-2.

## DIAGRAMS



## WARNING

nVent products shall be installed and used only as indicated in nVent's product instruction sheets and training materials. Instruction sheets are available at [www.nvent.com](http://www.nvent.com) and from your nVent customer service representative. Improper installation, misuse, misapplication or other failure to completely follow nVent's instructions and warnings may cause product malfunction, property damage, serious bodily injury and death and/or void your warranty.

#### North America

+1.800.753.9221

Option 1 – Customer Care

Option 2 – Technical

Support

#### Europe

Netherlands:

+31 800-0200135

France:

+33 800 901 793

#### Europe

Germany:

800 1890272

Other Countries:

+31 13 5835404

#### APAC

Shanghai:

+ 86 21 2412 1618/19

Sydney:

+61 2 9751 8500



Our powerful portfolio of brands:

**CADDY**

**ERICO**

**HOFFMAN**

**ILSCO**

**SCHROFF**

**TRACHTE**

