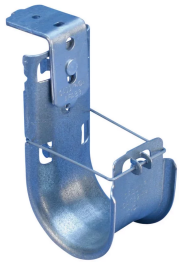


nVent CADDY Cat HP J-Hook with Pin Driven Angle Bracket



CERTIFICATIONS



FEATURES

Longer leg angle bracket for tool clearance

Designed to fit a variety of pin drivers

Provides optimal support for high-performance data cable, up to and including Cat 5e, Cat 6, Cat 6A, Cat 7 and fibre optic

Provides superior fill capacity and load rating over most other non-continuous cable support alternatives

Rounded edges on J-Hooks provide proper bend radius support for high performance data cables

Cost effective alternative to expensive cable tray

Complies with EN 50174-2

Meets ISO®/IEC 14763-2, ANSI®/TIA 568 and ANSI®/TIA 569

SPECIFICATIONS

Finish: Pregalvanized

Material: Steel

Table 1/2

Catalog Number	Article Number	Diameter (Ø)	Area	Cable Capacity, Cat 5e	Cable Capacity, Cat 6	Cable Capacity, Cat 6A
CAT64HPAFAB 3	181223	100 mm	9987mm ²	330	220	140
CAT21HPAFAB 3	181191	33.3 mm	1174mm ²	50	40	25
CAT16HPAFAB 3	181009	25 mm	690mm ²	20	15	10
CAT48HPAFAB 3	181233	75 mm	5974mm ²	200	150	80
CAT32HPAFAB 3	181011	50 mm	2561mm ²	90	60	35
CAT21HPAFAB 4	181192	33.3 mm	1174mm ²	50	40	25
CAT48HPAFAB 4	181234	75 mm	5974mm ²	200	150	80
CAT64HPAFAB 4	181224	100 mm	9987mm ²	330	220	140
CAT32HPAFAB 4	181012	50 mm	2561mm ²	90	60	35
CAT21HPAFAB 6	181193	33.3 mm	1174mm ²	50	40	25
CAT64HPAFAB 6	181225	100 mm	9987mm ²	330	220	140
CAT48HPAFAB 6	181235	75 mm	5974mm ²	200	150	80
CAT32HPAFAB 6	181013	50 mm	2561mm ²	90	60	35

Table 2/2

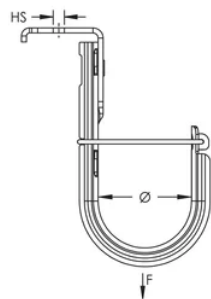
Catalog Number	Article Number	Hole Size (HS)	Static Load
CAT64HPAFAB3	181223	4 mm	270N
CAT21HPAFAB3	181191	4 mm	270N
CAT16HPAFAB3	181009	4 mm	270N
CAT48HPAFAB3	181233	4 mm	270N
CAT32HPAFAB3	181011	4 mm	270N
CAT21HPAFAB4	181192	6 mm	270N
CAT48HPAFAB4	181234	6 mm	270N
CAT64HPAFAB4	181224	6 mm	270N
CAT32HPAFAB4	181012	6 mm	270N
CAT21HPAFAB6	181193	9 mm	270N
CAT64HPAFAB6	181225	9 mm	270N
CAT48HPAFAB6	181235	9 mm	270N
CAT32HPAFAB6	181013	9 mm	270N

ADDITIONAL PRODUCT DETAILS

Non-continuous supports may not exceed spacing of 5' (1.5 m) per TIA 569-C.9.7 and EN 50174-2.

Cable capacity is calculated based on a 70% fill rate.

DIAGRAMS



WARNING

nVent products shall be installed and used only as indicated in nVent's product instruction sheets and training materials. Instruction sheets are available at www.nvent.com and from your nVent customer service representative. Improper installation, misuse, misapplication or other failure to completely follow nVent's instructions and warnings may cause product malfunction, property damage, serious bodily injury and death and/or void your warranty.

North America

+1.800.753.9221
Option 1 – Customer Care
Option 2 – Technical
Support

Europe

Netherlands:
+31 800-0200135
France:
+33 800 901 793

Europe

Germany:
800 1890272
Other Countries:
+31 13 5835404

APAC

Shanghai:
+ 86 21 2412 1618/19
Sydney:
+61 2 9751 8500



Our powerful portfolio of brands:

CADDY ERICO HOFFMAN ILSCO SCHROFF TRACHTE

