



04

Human Machine Interface

PC Enclosure Range	
PC Enclosure, MCM.....	434
Console Range	
Compact console, MPG	438
Modular console, MPC	442
Compact console, MPGS	450
Modular console, MPCS.....	454
Accessories for consoles	462
Swing Arm System	
Control enclosure, OICE	468
Accessories for control enclosure.....	472
Control panel, OICP.....	474
Accessories for control panel	478
Light swing arm system, S1	480
Accessories	482
Medium swing arm system, S2	490
Accessories	492

Human Machine Interface
PC Enclosure Range | Mild Steel
Mild steel | MCM

IP 44 | IK 10

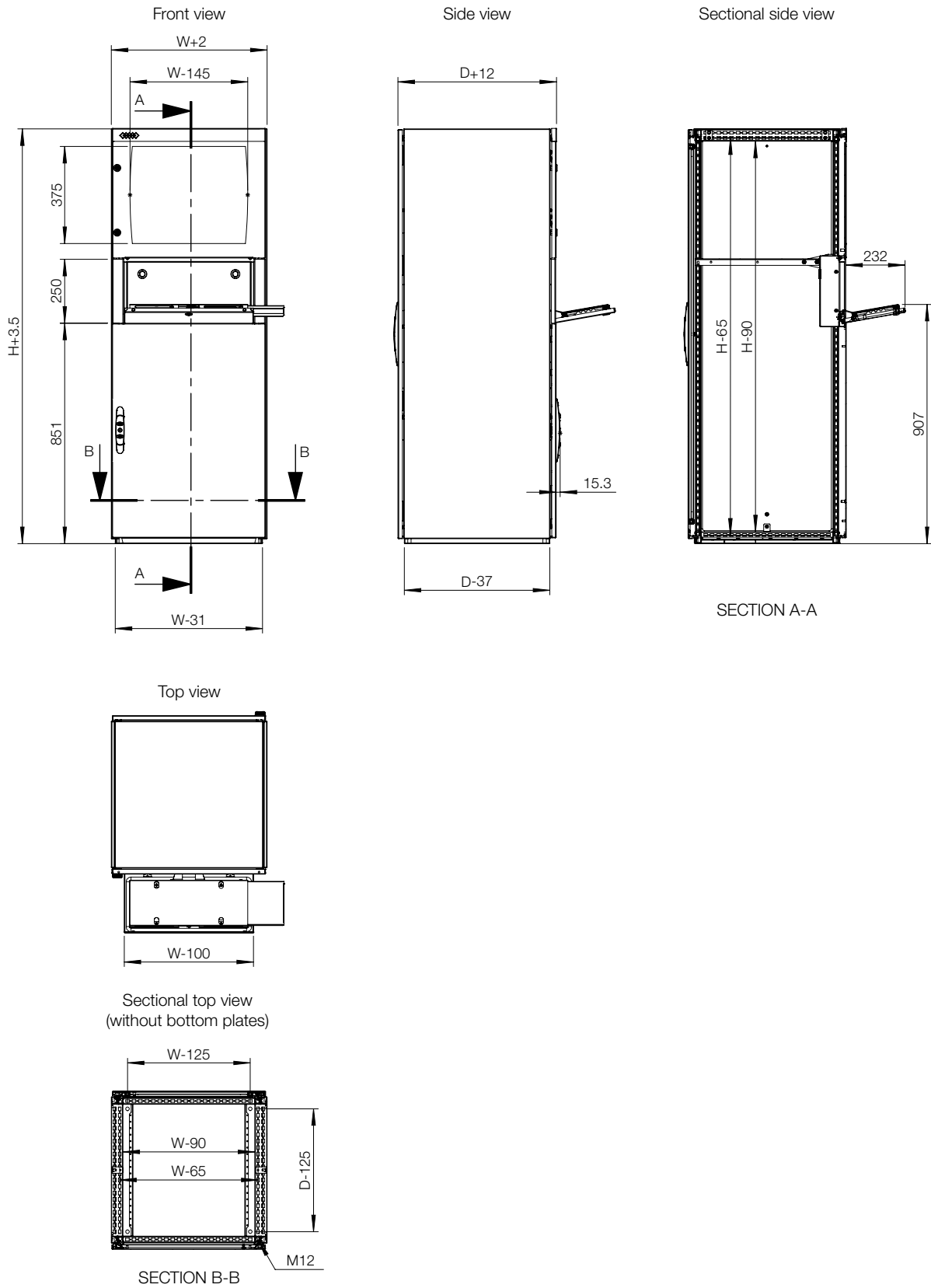


- Material:**
Frame: 1.5 mm steel plate. Roof and side panels: 1.35 mm steel plate. Doors: 2 mm steel plate. Bottom plates: 1 mm galvanized steel.
- Frame:**
Seam welded reversed open profiles with 25 mm hole pattern, according to DIN 43660. Including integrated external hole pattern.
- Door:**
Mounted with two hinges per door. Top door with safety glass. Viewing area for 14"-21" monitor. Two C21323 locks for the top door, and espagnolette two point locking system, with standard 3 mm double-bit lock for the bottom door.
- Rear door:**
Mounted with hinges, allowing left or right hand opening. Including door frame, with 25 mm hole pattern. Espagnolette four point locking system, with standard 3 mm double-bit lock.
- Keyboard panel:**
Vertical opening keyboard panel. Sliding mouse pad, allowing left or right hand use. Max keyboard dimensions: 470 × 190 × 45 mm. C21323 lock.
- Bottom plates:**
Consists of three or four (D> 600) pieces.
- Finish:**
Two tone finish. Doors, side panels, roof and frame in RAL 7035 structured powder coating. Keyboard side panels and monitor door top cover in RAL 7015 structured powder coating. Other colour schemes optional.
- Features:**
Special design of roof and side panels for theft security. All panels are only accessible when the doors are unlocked. Your own company name can be inserted in the top cover (option).
- Protection:**
IP 44 | IK 10. With keyboard tray opened, reduces to IP 30.
- Mounting requirements:**
Equipment shelves need to be added.
- Delivery:**
Frame with fitted rear door, side panels, roof panel, monitor door, keyboard panel, bottom plates and monitor shelf, with clamps to fix the monitor. Delivery also includes earthing bolts. The enclosure is delivered on a pallet identical to the enclosure width. All packing material is recyclable.



IP 44 | IK 10

Enclosure dimensions			
H Plinth	W	D	Item no.
1600	600	600	MCM16066
1600	600	800	MCM16068



Human Machine Interface
Console Range | Mild Steel
Compact | MPG

IP 66 | TYPE 4, 12, 13 | IK 10 (single door); IP 55 | TYPE 12, 13 | IK 10 (double door)



- Material:**
Body and door: 1.5 mm mild steel. Rear panel: 1.5 mm mild steel. Bottom plates: 1.2 mm galvanized steel. Mounting plate: 2.5 mm galvanized steel.
- Body:**
Folded and seam welded. Console construction includes a base that provides a distance between the floor and the lower part of the door/s, acting as an integrated plinth.
- Doors and panels:**
Single folded surface mounted with hinges, allowing left and right-hand opening to base door. Angle 12° from horizontal. Concealed hinges on top edge allow 90° opening. Panel held open by self engage/self release mechanical panel stay. Double door on 1200 and 1600 mm wide base units.
- Mounting plate:**
Standard mounting plate in base unit.
- Lock:**
Double-bit 3 mm locks for top panel. For base, two double-bit 3 mm locks. Other options available. See wall mounting section.
- Cable inlet:**
Bottom opening for cable access. Bottom plates for cable glanding supplied as standard.
- Earthing:**
M8 threaded studs on body, door, top panel and rear panel.
- Finish:**
RAL 7035 structured powder coating.
- Protection:**
Single door: IP 66 | TYPE 4, 12, 13 | IK 10. Double door: IP 55 | TYPE 12, 13 | IK 10.
- Delivery:**
Mounting plate and suitable nuts and washers for earthing. The console is delivered on a wooden pallet.



IP 66 | TYPE 4, 12, 13 | IK 10 (single door); IP 55 | TYPE 12, 13 | IK 10 (double door)

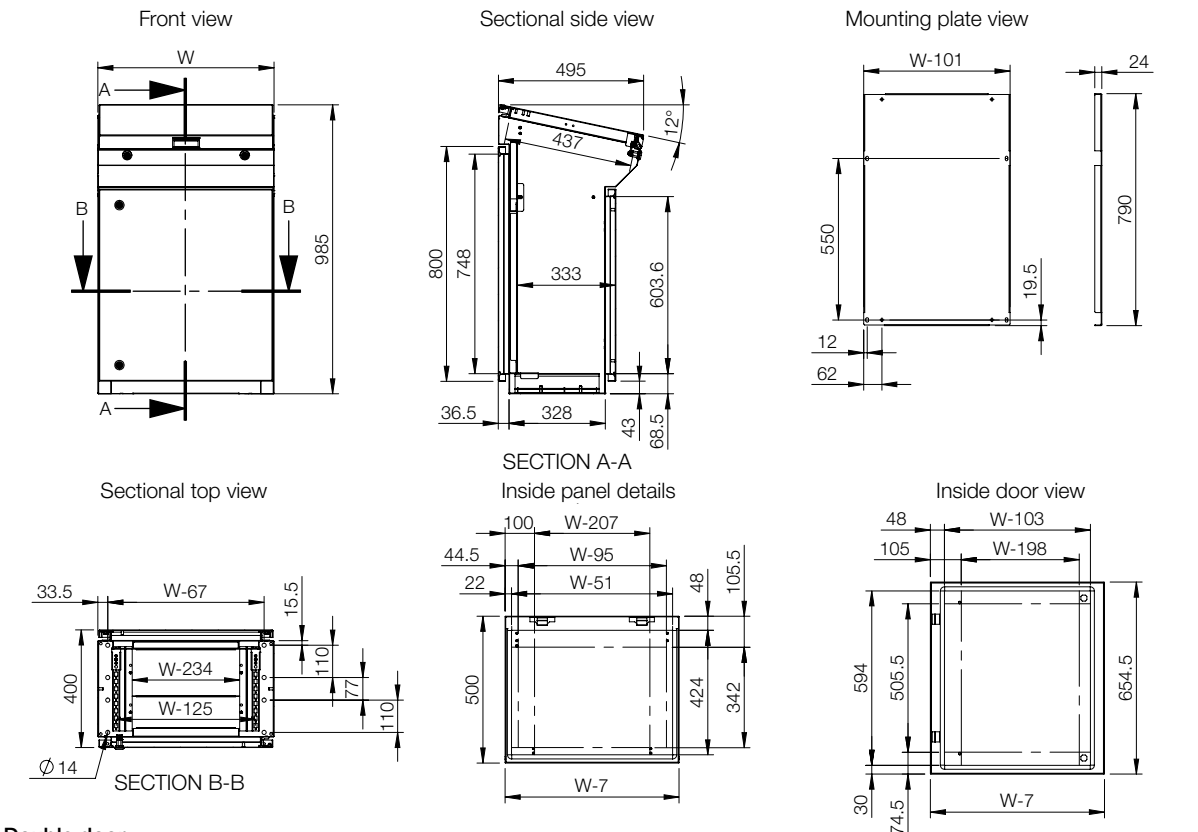
Mild steel

Enclosure dimensions			Mounting plate dimensions		Usable depth	Item no.
H	W	D	h	w	d	
985	600	400	790	499	333	MPG06R5
985	800	400	790	699	333	MPG08R5
985	1000	400	790	899	333	MPG10R5
985	1200	400	790	1099	333	MPG12R5
985	1600	400	790	1499	333	MPG16R5

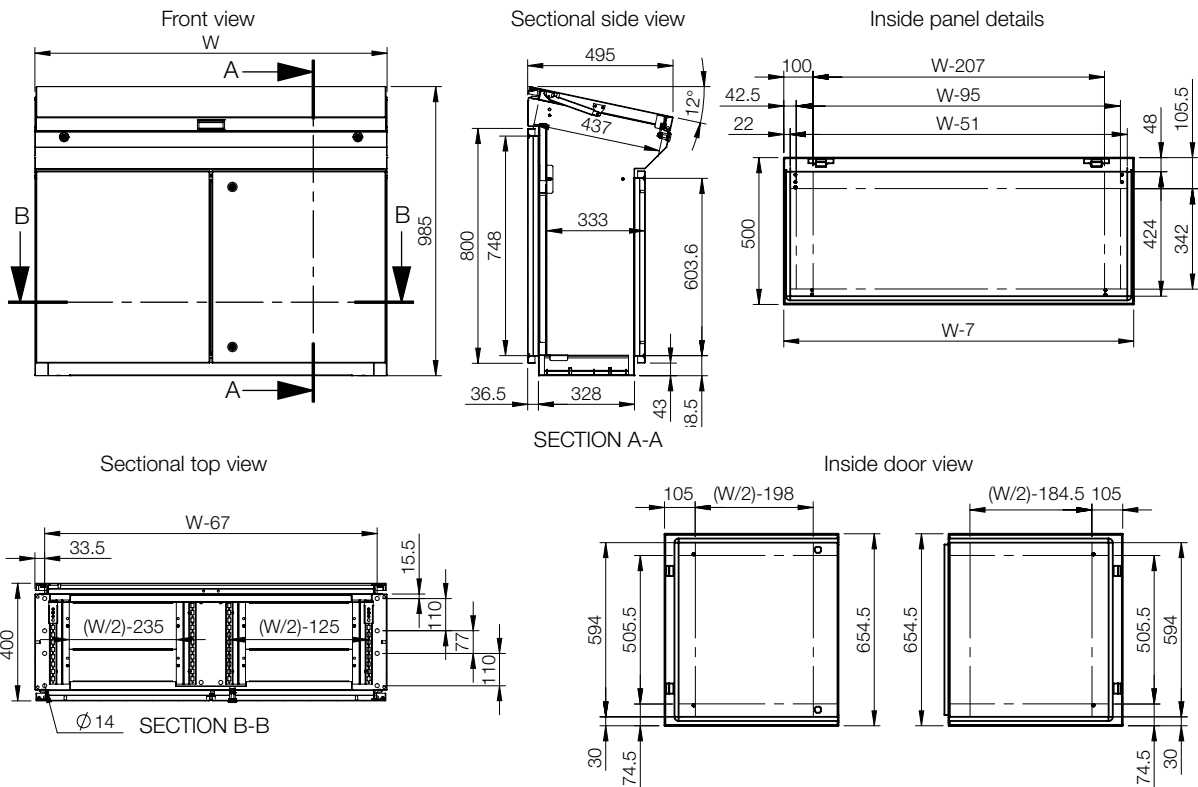
Note: Only 1200 mm and 1600 mm wide consoles have double door.



Single door



Double door



Human Machine Interface
Console Range | Mild Steel
Modular | MPC

IP 66 | TYPE 4, 12, 13 | IK 10 (single door); IP 55 | TYPE 12, 13 | IK 10 (double door)



Material:
Body and door: 1.5 mm mild steel. Rear panel: 1.5 mm mild steel. Bottom plates: 1.2 mm galvanized steel. Mounting plate: 2.5 mm galvanized steel.

Body:
Folded and seam welded. Console construction includes a base that provides a distance between the floor and the lower part of the door/s, acting as an integrated plinth.

Doors and panels:
Single folded surface mounted with hinges, allowing left and right-hand opening to base door. Top section and desk panels held open by self engage/self release mechanical panel stays. Concealed hinges, allowing 90° opening on the desk. Double door on 1200 and 1600 mm wide base units.

Mounting plate:
Standard mounting plate in base unit. Fixed by fixing brackets on C rail, top and bottom, for depth adjustment. Optional in desk and top section units.

Lock:
Double-bit 3 mm locks for top section and desk unit. For base, two double-bit 3 mm locks. Other options available. See wall mounting section.

Cable access:
Bottom opening in base unit for cable access. Bottom plates for cable glanding supplied as standard.

Earthing:
M8 threaded studs on bodies, doors and rear panels.

Finish:
RAL 7035 structured powder coating.

Protection:
Single door: IP 66 | TYPE 4, 12, 13 | IK 10. Double door: IP 55 | TYPE 12, 13 | IK 10.

Delivery:
The base unit is provided with a mounting plate as standard. Desk and top section units have mounting plates provided as accessories. All top and base openings can be closed by choosing the appropriate accessory plate. Suitable nuts and washers for the various earthing studs are provided.



IP 66 | TYPE 4, 12, 13 | IK 10 (single door); IP 55 | TYPE 12, 13 | IK 10 (double door)

Top section units | Mild steel

Enclosure dimensions				Item no.
H	W	D		
500	600	494		MPC061R5
500	800	494		MPC081R5
500	1000	494		MPC101R5
500	1200	494		MPC121R5
500	1600	494		MPC161R5

Desk units | Mild steel

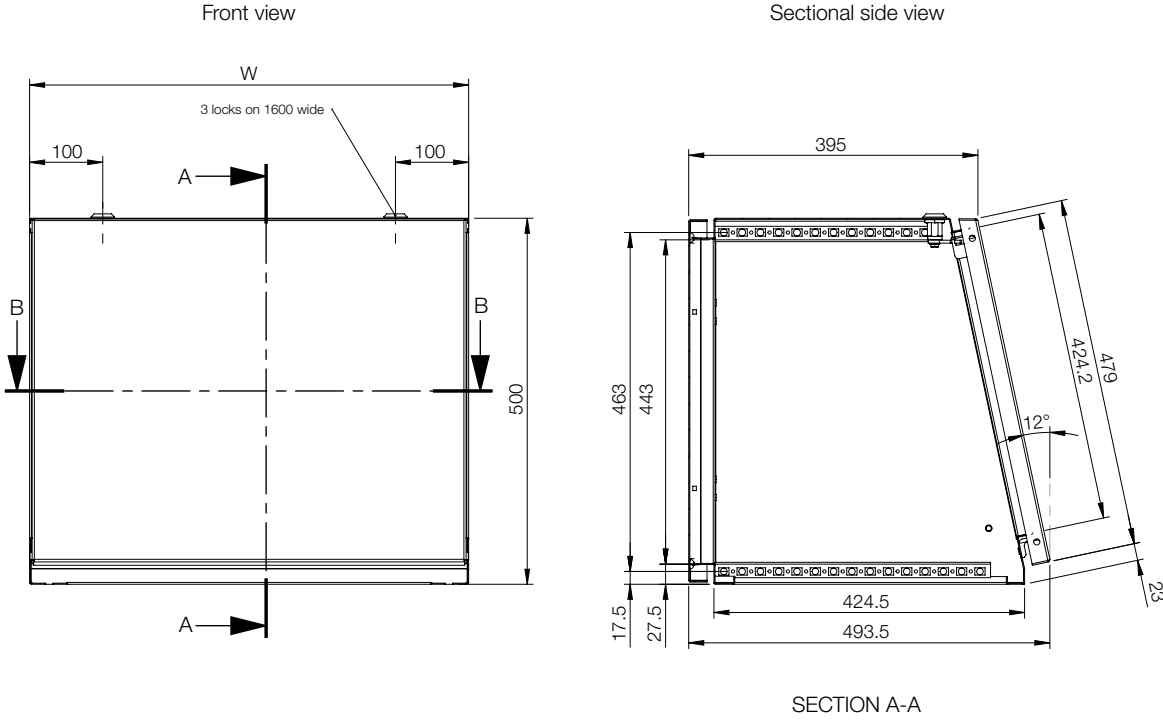
Enclosure dimensions				Item no.
H	W	D		
250	600	985		MPC062R5
250	800	985		MPC082R5
250	1000	985		MPC102R5
250	1200	985		MPC122R5
250	1600	985		MPC162R5

Base units with mounting plate | Mild steel

Enclosure dimensions			Mounting plate dimensions		Usable depth	Item no.
H	W	D	h	w	d	
700	600	500	590	499	470.5	MPC063R5
700	800	500	590	699	470.5	MPC083R5
700	1000	500	590	899	470.5	MPC103R5
700	1200	500	590	1099	470.5	MPC123R5
700	1600	500	590	1499	470.5	MPC163R5

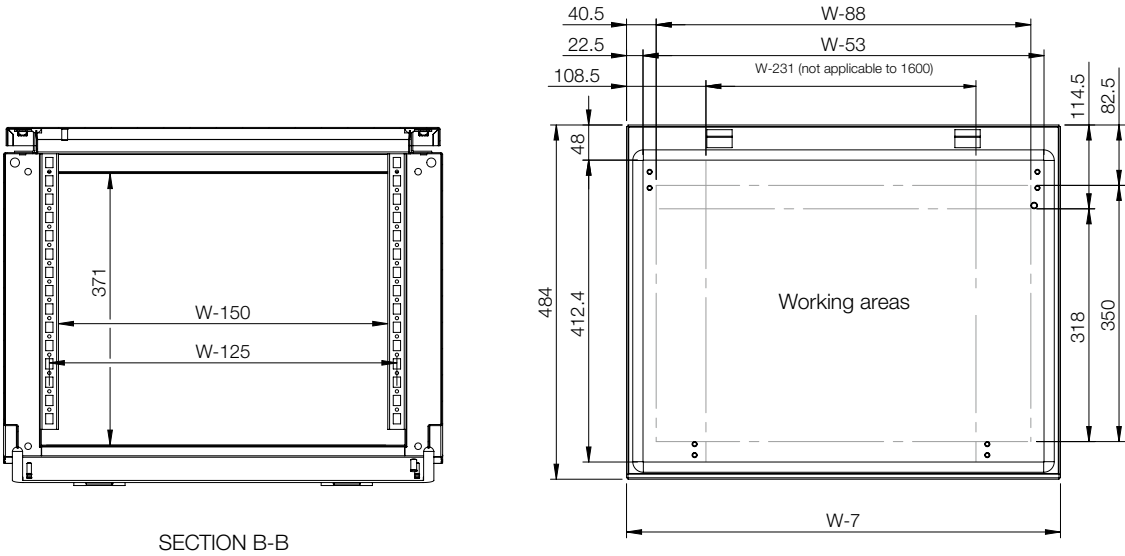
Note: Only 1200 mm and 1600 mm wide consoles have double door.

Top section units

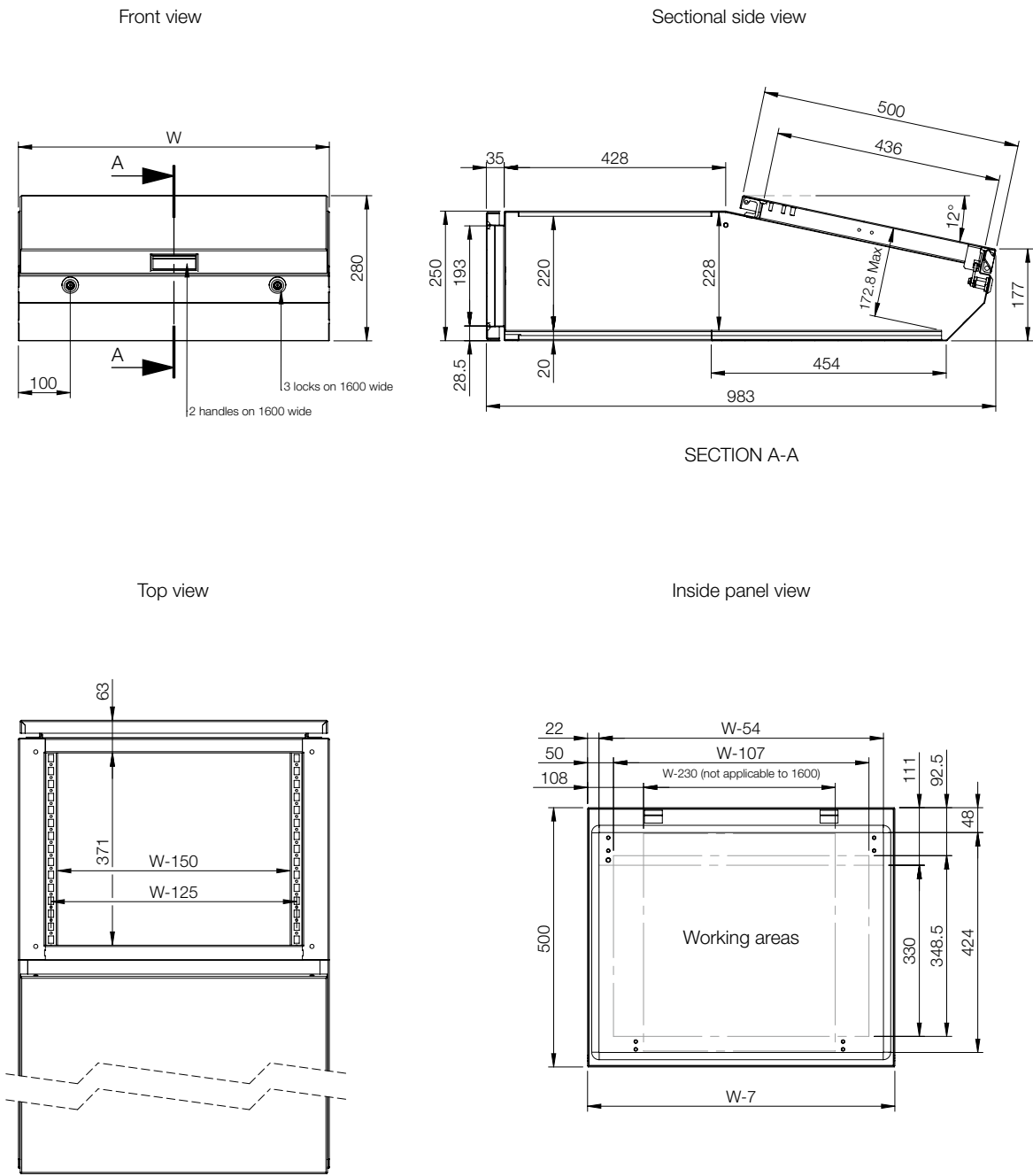


Sectional top view

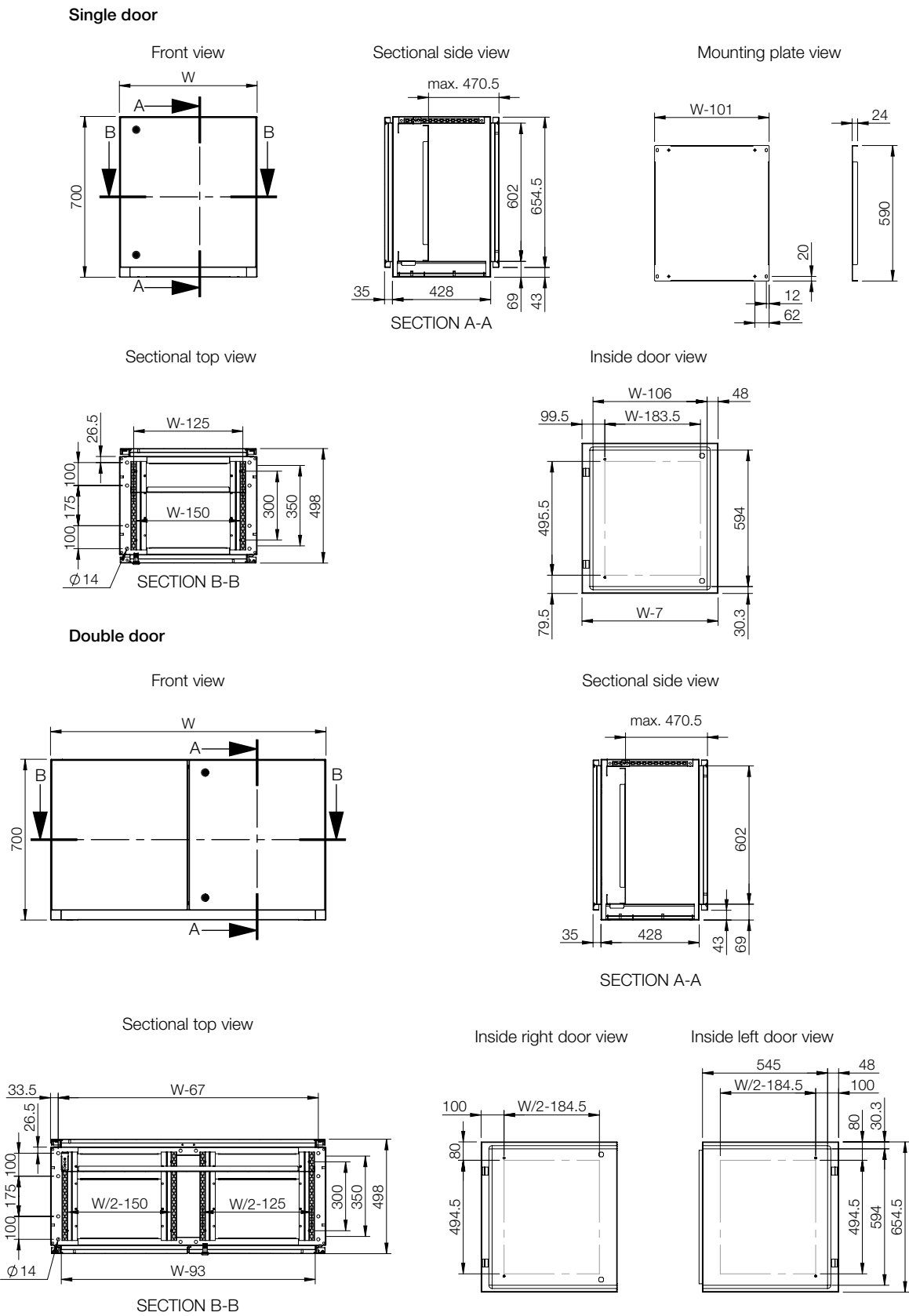
Inside panel view





Desk unit







Base unit with mounting plate







Accessories selection matrix | MPG

					
Console		Mounting			
	H	W	D	Mounting plate	Mounting plate depth adjustment kit
MPG06R5	985	600	400	GCPZ06	MPGDA01
MPG08R5	985	800	400	GCPZ08	MPGDA01
MPG10R5	985	1000	400	GCPZ10	MPGDA01
MPG12R5	985	1200	400	GCPZ12	MPGDA01
MPG16R5	985	1600	400	GCPZ16	MPGDA01

							
Console		Fixing					
	H	W	D	Front/rear plinths (100 mm height)	Side plinths (100 mm height)	Front/rear plinths (200 mm height)	Side plinths (200 mm height)
MPG06R5	985	600	400	PF1060	PST1040	PF2060	PST2040
MPG08R5	985	800	400	PF1080	PST1040	PF2080	PST2040
MPG10R5	985	1000	400	PF1100	PST1040	PF2100	PST2040
MPG12R5	985	1200	400	PF1120	PST1040	PF2120	PST2040
MPG16R5	985	1600	400	2x PF1080	PST1040	2x PF2080	PST2040

Accessories selection matrix | MPC

							
Console		Mounting				Lids	
	H	W	D	Mounting plate	Segregation plate	Cover plate	Stainless steel panel
MPC061R5	500	600	494	CDPZ06	-	-	MPPS061
MPC081R5	500	800	494	CDPZ08	-	-	MPPS081
MPC101R5	500	1000	494	CDPZ10	-	-	MPPS101
MPC121R5	500	1200	494	CDPZ12	-	-	MPPS121
MPC161R5	500	1600	494	CDPZ16	-	-	MPPS161
MPC062R5	250	600	985	CDPZ06	SGPZ06	BDP06R5	MPLS062
MPC082R5	250	800	985	CDPZ08	SGPZ08	BDP08R5	MPLS082
MPC102R5	250	1000	985	CDPZ10	SGPZ10	BDP10R5	MPLS102
MPC122R5	250	1200	985	CDPZ12	SGPZ12	BDP12R5	MPLS122
MPC162R5	250	1600	985	CDPZ16	SGPZ16	BDP16R5	MPLS162
MPC063R5	700	600	500	CBPZ06	-	BDP06R5	-
MPC083R5	700	800	500	CBPZ08	-	BDP08R5	-
MPC103R5	700	1000	500	CBPZ10	-	BDP10R5	-
MPC123R5	700	1200	500	CBPZ12	-	BDP12R5	-
MPC163R5	700	1600	500	CBPZ16	-	BDP16R5	-

							
Console		Fixing					
	H	W	D	Front/rear plinths (100 mm height)	Plinth side panels (100 mm height)	Front/rear plinths (200 mm height)	Plinth side panels (200 mm height)
MPC061R5	500	600	494	-	-	-	-
MPC081R5	500	800	494	-	-	-	-
MPC101R5	500	1000	494	-	-	-	-
MPC121R5	500	1200	494	-	-	-	-
MPC161R5	500	1600	494	-	-	-	-
MPC062R5	250	600	985	-	-	-	-
MPC082R5	250	800	985	-	-	-	-
MPC102R5	250	1000	985	-	-	-	-
MPC122R5	250	1200	985	-	-	-	-
MPC162R5	250	1600	985	-	-	-	-
MPC063R5	700	600	500	PF1060	PST1050	PF2060	PST2050
MPC083R5	700	800	500	PF1080	PST1050	PF2080	PST2050
MPC103R5	700	1000	500	PF1100	PST1050	PF2100	PST2050
MPC123R5	700	1200	500	PF1120	PST1050	PF2120	PST2050
MPC163R5	700	1600	500	2x PF1080	PST1050	2x PF2080	PST2050

Human Machine Interface
Console Range | Stainless Steel
Compact | MPGS

IP 66 | TYPE 4X, 12, 13 | IK 10 (single door); IP 55 | TYPE 12, 13 | IK 10 (double door)



- Material:**
AISI 304 pre-grained stainless steel / AISI 316L (on request). Body and door: 2 mm. Rear panel: 1.5 mm. Bottom plates: 1.5 mm. Mounting plate: 2.5 mm galvanized steel.
- Body:**
Folded and seam welded. Console construction includes a base that provides a distance between the floor and the lower part of the door/s, acting as an integrated plinth.
- Doors and panels:**
Single folded surface mounted with hinges, allowing left and right-hand opening to base door. Angle 12° from horizontal. Concealed hinges, on top edge, allow 90° opening. Panel held open by self engage/self release mechanical panel stay. Double door on 1200 wide base units.
- Mounting plate:**
Standard mounting plate in base unit.
- Lock:**
Double-bit 3 mm locks for top panel. For base, two double-bit 3 mm locks. Other options available. See wall mounting section.
- Cable inlet:**
Bottom opening for cable access. Bottom plate for cable glanding supplied as standard.
- Earthing:**
M8 threaded studs on body, door, top panel and rear panel.
- Finish:**
400 pre-grained stainless steel.
- Protection:**
Single door: IP 66 | TYPE 4X, 12, 13 | IK 10. Double door: IP 55 | TYPE 12, 13 | IK 10.
- Delivery:**
Mounting plate and suitable nuts and washers for earthing. The console is delivered on a wooden pallet.

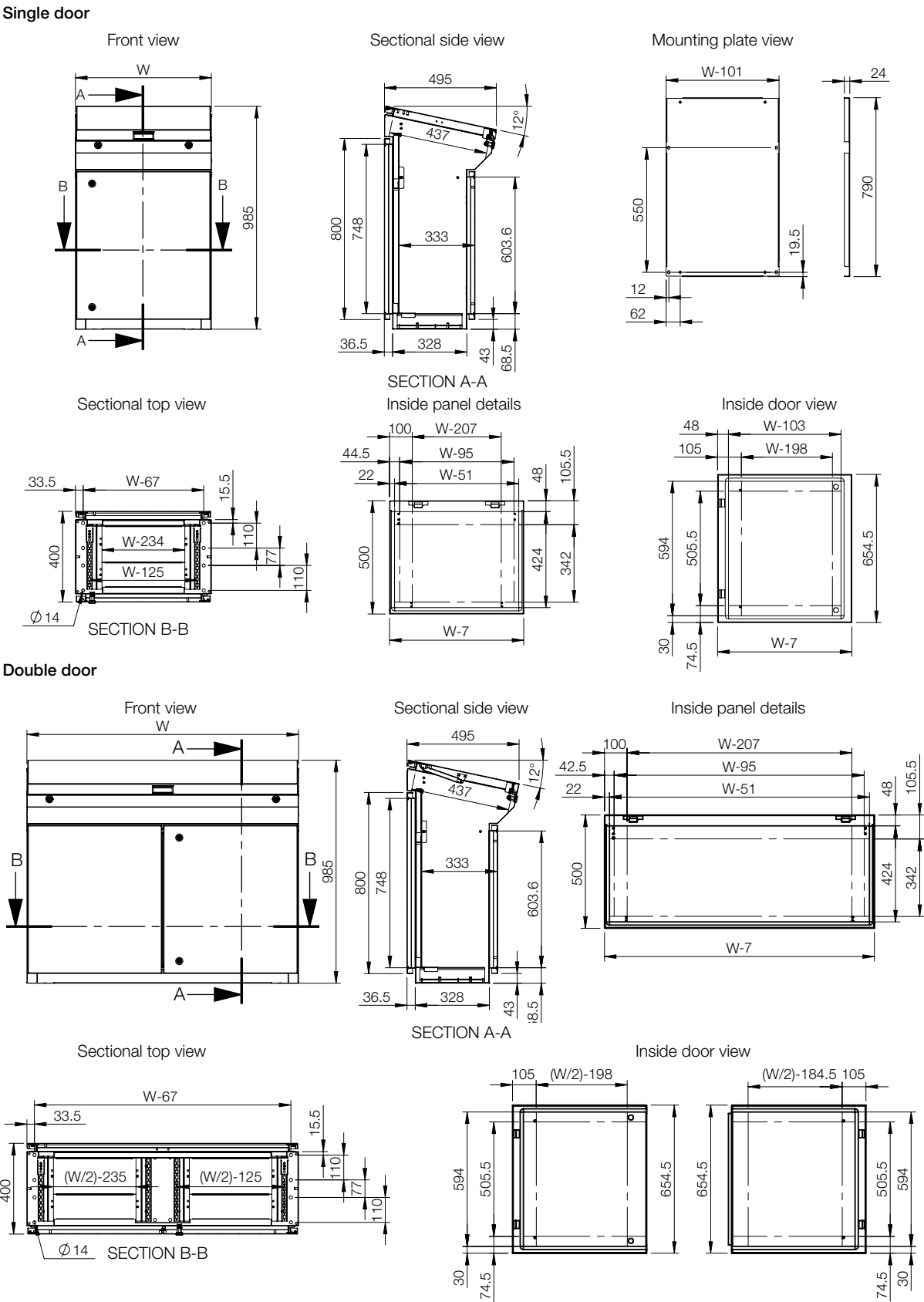


IP 66 | TYPE 4X, 12, 13 | IK 10 (single door); IP 55 | TYPE 12, 13 | IK 10 (double door)

Stainless steel

Enclosure dimensions			Mounting plate dimensions		Usable depth	Item no.
H	W	D	h	w	d	
985	600	400	790	499	357.5	MPGS06
985	600	400	790	499	357.5	MPGS06-316*
985	800	400	790	699	357.5	MPGS08
985	800	400	790	699	357.5	MPGS08-316*
985	1000	400	790	899	357.5	MPGS10
985	1000	400	790	899	357.5	MPGS10-316*
985	1200	400	790	1099	357.5	MPGS12
985	1200	400	790	1099	357.5	MPGS12-316*

Note: Only 1200 mm wide consoles have double door. * On request.



Human Machine Interface
Console Range | Stainless Steel
Modular | MPCS

IP 66 | TYPE 4X, 12, 13 | IK 10 (single door); IP 55 | TYPE 12, 13 | IK 10 (double door)



- Material:**
AISI 304 pre-grained stainless steel / AISI 316L (on request). Body and door: 2 mm. Rear panel: 1.5 mm. Bottom plates: 1.5 mm. Mounting plate: 2.5 mm galvanized steel.
- Body:**
Folded and seam welded. Console construction includes a base that provides a distance between the floor and the lower part of the door/s, acting as an integrated plinth.
- Doors and panels:**
Single folded surface mounted with hinges, allowing left and right-hand opening to base door. Top section and desk panels held open by self engage/self release mechanical panel stays. Concealed hinges allowing 90° opening on the desk. Double doors on 1200 mm and 1600 mm wide base units.
- Mounting plate:**
Standard in base unit. Fixed by fixing brackets on C rail, top and bottom for depth adjustment. Optional in desk and top section units.
- Lock:**
Double-bit 3 mm locks for top section and desk unit. For base, two double-bit 3 mm locks. Other options available. See wall mounting section.
- Cable access:**
Bottom opening in base unit for cable access. Bottom plates for cable glanding supplied as standard.
- Earthing:**
M8 threaded studs on bodies, doors and rear panels.
- Finish:**
400 pre-grained stainless steel.
- Protection:**
Single door: IP 66 | TYPE 4X, 12, 13 | IK 10. Double door: IP 55 | TYPE 12, 13 | IK 10.
- Delivery:**
The base unit is provided with a mounting plate as standard. Desk and top section units have mounting plates provided as accessories. All top and base apertures can be closed by choosing the appropriate accessory plate. Suitable nuts and washers for the various earthing studs are provided.



IP 66 | TYPE 4X, 12, 13 | IK 10 (single door); IP 55 | TYPE 12, 13 | IK 10 (double door)

Top section units | Stainless steel

Enclosure dimensions			
H	W	D	Item no.
500	600	494	MPCS061
500	600	494	MPCS061-316
500	800	494	MPCS081
500	800	494	MPCS081-316
500	1000	494	MPCS101
500	1000	494	MPCS101-316
500	1200	494	MPCS121
500	1200	494	MPCS121-316
500	1600	494	MPCS161
500	1600	494	MPCS161-316

Desk units | Stainless steel

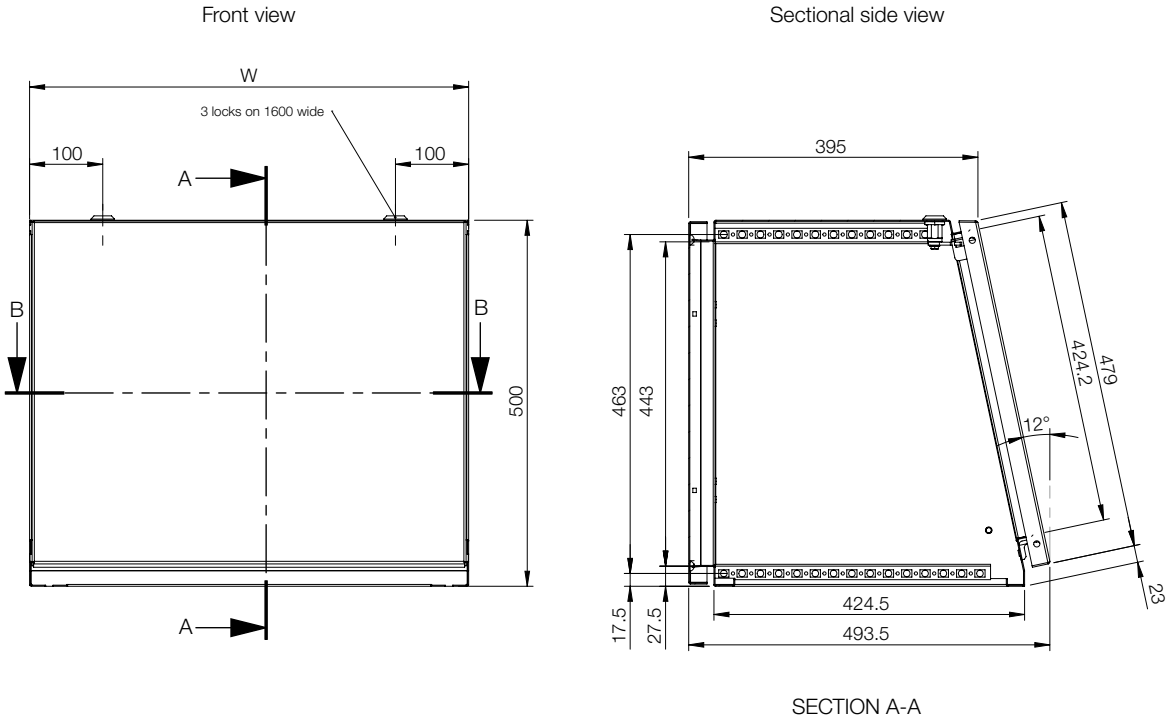
Enclosure dimensions			
H	W	D	Item no.
250	600	985	MPCS062
250	600	985	MPCS062-316
250	800	985	MPCS082
250	800	985	MPCS082-316
250	1000	985	MPCS102
250	1000	985	MPCS102-316
250	1200	985	MPCS122
250	1200	985	MPCS122-316
250	1600	985	MPCS162
250	1600	985	MPCS162-316

Base units with mounting plate | Stainless steel

Enclosure dimensions			Mounting plate dimensions		Usable depth	Item no.
H	W	D	h	w	d	
700	600	500	590	499	470.5	MPCS063
700	600	500	590	499	470.5	MPCS063-316
700	800	500	590	699	470.5	MPCS083
700	800	500	590	699	470.5	MPCS083-316
700	1000	500	590	899	470.5	MPCS103
700	1000	500	590	899	470.5	MPCS103-316
700	1200	500	590	1099	470.5	MPCS123
700	1200	500	590	1099	470.5	MPCS123-316
700	1600	500	590	1499	470.5	MPCS163
700	1600	500	590	1499	470.5	MPCS163-316

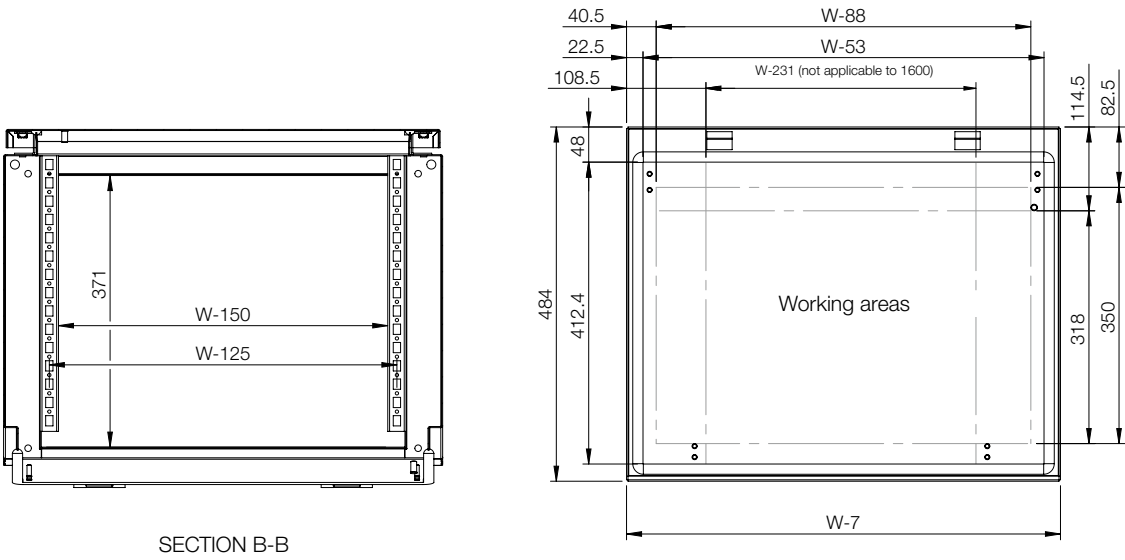
Note: Only 1200 mm and 1600 mm wide consoles have double door. * On request.

Top section units

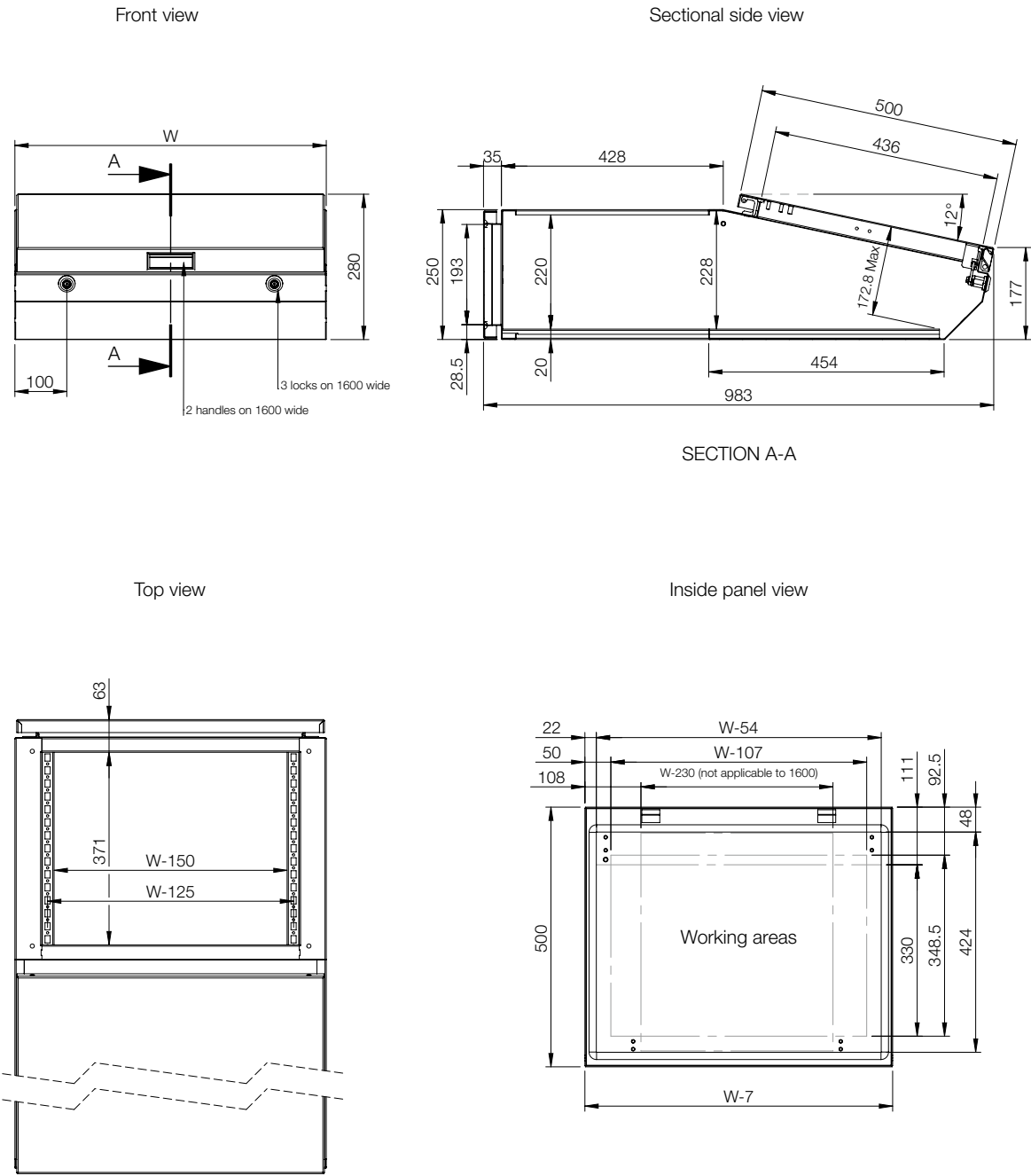


Sectional top view

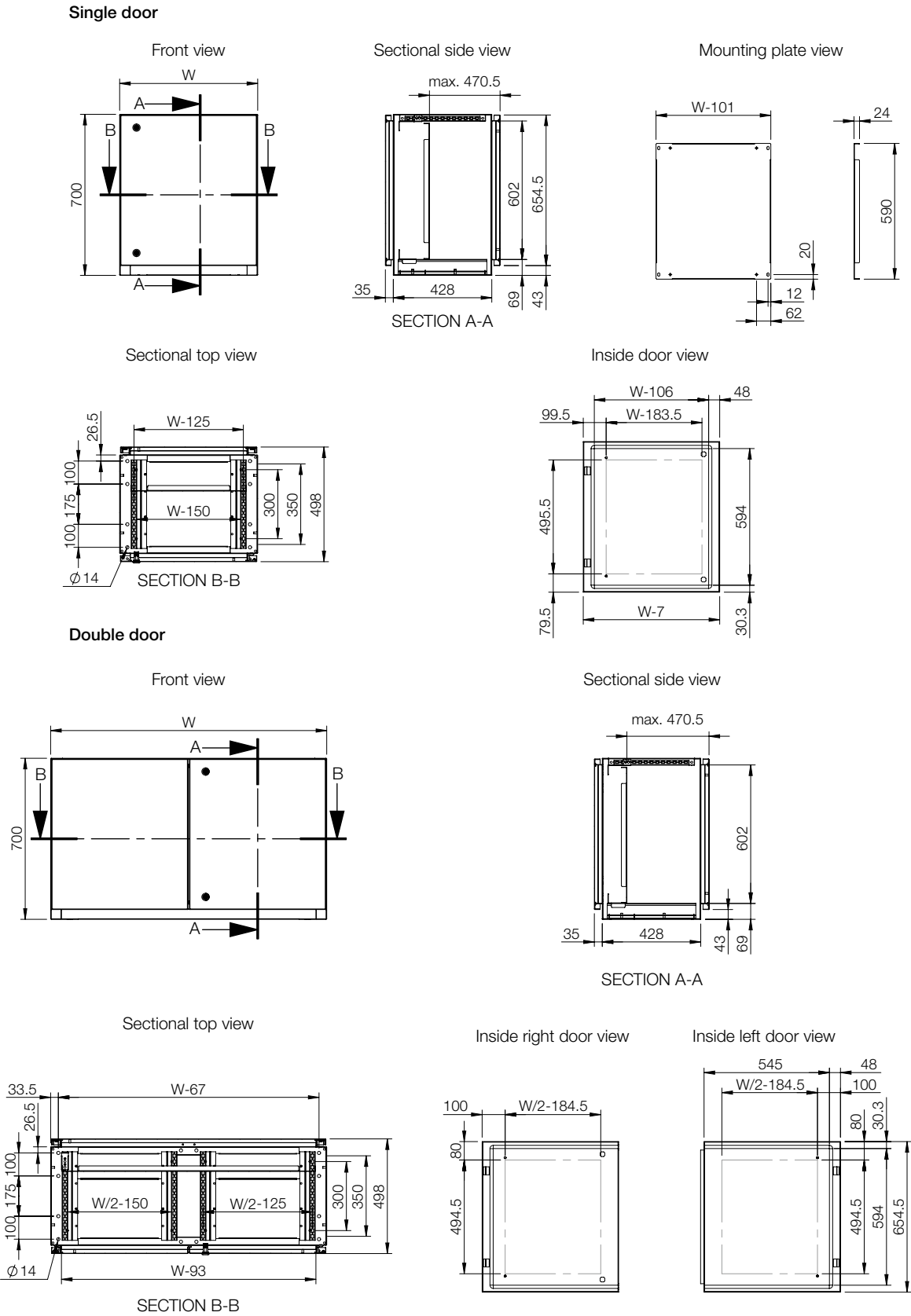
Inside panel view



Desk unit





Base unit with mounting plate



Accessories selection matrix | MPGS

							
Console				Mounting		Fixing	
	H	W	D	Mounting plate	Depth adjustment kit	Plinth (100 mm height)	Plinth (200 mm height)
MPGS06	985	600	400	GCPZ06	MPGDA01	MSNS1064	MSNS2064
MPGS06-316	985	600	400	GCPZ06	MPGDA01	MSNS1064	MSNS2064
MPGS08	985	800	400	GCPZ08	MPGDA01	MSNS1084	MSNS2084
MPGS08-316	985	800	400	GCPZ08	MPGDA01	MSNS1084	MSNS2084
MPGS10	985	1000	400	GCPZ10	MPGDA01	MSNS1104	MSNS2104
MPGS10-316	985	1000	400	GCPZ10	MPGDA01	MSNS1104	MSNS2104
MPGS12	985	1200	400	GCPZ12	MPGDA01	MSNS1124	MSNS2124
MPGS12-316	985	1200	400	GCPZ12	MPGDA01	MSNS1124	MSNS2124

Accessories selection matrix | MPCS

								
Console				Mounting		Fixing		Lids
	H	W	D	Mounting plate	Segregation plate	Plinth (100 mm height)	Plinth (200 mm height)	Cover plate
MPCS061	500	600	494	CDPZ06	-	-	-	-
MPCS061-316	500	600	494	CDPZ06	-	-	-	-
MPCS081	500	800	494	CDPZ08	-	-	-	-
MPCS081-316	500	800	494	CDPZ08	-	-	-	-
MPCS101	500	1000	494	CDPZ10	-	-	-	-
MPCS101-316	500	1000	494	CDPZ10	-	-	-	-
MPCS121	500	1200	494	CDPZ12	-	-	-	-
MPCS121-316	500	1200	494	CDPZ12	-	-	-	-
MPCS161	500	1600	494	CDPZ16	-	-	-	-
MPCS161-316	500	1600	494	CDPZ16	-	-	-	-
MPCS062	250	600	985	CDPZ06	SGPZ06	-	-	BDPS06
MPCS062-316	250	600	985	CDPZ06	SGPZ06	-	-	BDPS06
MPCS082	250	800	985	CDPZ08	SGPZ08	-	-	BDPS08
MPCS082-316	250	800	985	CDPZ08	SGPZ08	-	-	BDPS08
MPCS102	250	1000	985	CDPZ10	SGPZ10	-	-	BDPS10
MPCS102-316	250	1000	985	CDPZ10	SGPZ10	-	-	BDPS10
MPCS122	250	1200	985	CDPZ12	SGPZ12	-	-	BDPS12
MPCS122-316	250	1200	985	CDPZ12	SGPZ12	-	-	BDPS12
MPCS162	250	1600	985	CDPZ16	SGPZ16	-	-	BDPS16
MPCS162-316	250	1600	985	CDPZ16	SGPZ16	-	-	BDPS16
MPCS063	700	600	500	CBPZ06	-	MSNS1065	MSNS2065	BDPS06
MPCS063-316	700	600	500	CBPZ06	-	MSNS1065	MSNS2065	BDPS06
MPCS083	700	800	500	CBPZ08	-	MSNS1085	MSNS2085	BDPS08
MPCS083-316	700	800	500	CBPZ08	-	MSNS1085	MSNS2085	BDPS08
MPCS103	700	1000	500	CBPZ10	-	MSNS1105	MSNS2105	BDPS10
MPCS103-316	700	1000	500	CBPZ10	-	MSNS1105	MSNS2105	BDPS10
MPCS123	700	1200	500	CBPZ12	-	MSNS1125	MSNS2125	BDPS12
MPCS123-316	700	1200	500	CBPZ12	-	MSNS1125	MSNS2125	BDPS12
MPCS163	700	1600	500	CBPZ16	-	2x MSNS1085	2x MSNS2085	BDPS16
MPCS163-316	700	1600	500	CBPZ16	-	2x MSNS1085	2x MSNS2085	BDPS16

Human Machine Interface
Consoles Range
Accessories

Mounting plate, GCPZ

Description:	Standard mounting plate for MPG(S) console. Adjustable in depth using MPGDA accessory.		
Material:	2.5 mm galvanized steel.		
Pack quantity:	1 plate with mounting accessories.		
For console		Mounting plate dimensions	
W	h	w	Item no.
600	790	499	GCPZ06
800	790	699	GCPZ08
1000	790	899	GCPZ10
1200	790	1099	GCPZ12
1600	790	1499	GCPZ16



Depth adjust kit, MPGDA

Description:	To provide depth adjustment for mounting plate.
Material:	2 mm galvanized steel.
Pack quantity:	1 set with mounting accessories.
Item no.	
MPGDA01	



Mounting plate, CBPZ

Description:	Standard mounting plate for MPC(S) base section.		
Material:	2 mm galvanized steel.		
Pack quantity:	1 plate with mounting accessories.		
For console		Mounting plate dimensions	
W	h	w	Item no.
600	590	499	CBPZ06
800	590	699	CBPZ08
1000	590	899	CBPZ10
1200	590	1099	CBPZ12
1600	590	1499	CBPZ16



Mounting plates, CDPZ

Description:	Can be used in top section and desk unit, also as a separation plate between desk and base.		
Material:	2.5 mm galvanized steel.		
Pack quantity:	1 plate with mounting accessories.		
For console		Mounting plate dimensions	
W	h	w	Item no.
600	427.5	530	CDPZ06
800	427.5	730	CDPZ08
1000	427.5	930	CDPZ10
1200	427.5	1130	CDPZ12
1600	427.5	1530	CDPZ16



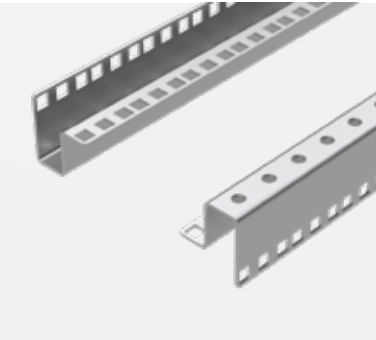
Segregation plates, SGPZ

Description:	Used to separate top section and desk unit. Can also be used as a mounting plate in desk.		
Material:	3 mm zinc plated steel.		
Pack quantity:	1 plate with mounting accessories.		
For console		Mounting plate dimensions	
W	h	w	Item no.
600	410	530	SGPZ06
800	410	730	SGPZ08
1000	410	930	SGPZ10
1200	410	1130	SGPZ12
1600	410	1530	SGPZ16



Mounting angles (19"), DNN

Description:	To achieve 19" or partial 19" in 800 mm wide enclosures, these profiles can be mounted with the mounting brackets DNB. To achieve 19" in 600 mm wide enclosures, use the brackets DND.	
Material:	2 mm zinc plated steel.	
Pack quantity:	2 pieces.	
N° of units		Item no.
6		DNN06
9		DNN09
10		DNN10
11		DNN11
13		DNN13
15		DNN15



Human Machine Interface
Consoles Range
Accessories

Mounting angles (19”) fixing brackets, DND

Description:	For fixing 19" profiles in 600 mm, wide enclosures. Adjustable in depth in 12.5 mm steps.
Material:	3 mm zinc plated mild steel.
Pack quantity:	4 brackets with mounting accessories.
Item no.	DND01



Mounting angles (19”) brackets, DNB

Description:	For mounting 19" profiles in 800 mm wide enclosures.
Material:	3 mm zinc plated steel.
Pack quantity:	4 brackets with mounting accessories.
Item no.	DNB01



Front/rear Plinths, PF-HMI

Description:	Front and rear plinth sections. For cabling without any restrictions and in accordance with the VDE 0113 standard. The plinth consists of four corner pieces with removable front covers. The side panels PST are to be ordered separately. Produced in 100 mm and 200 mm heights. 200 mm high plinths are delivered with a rear cover for cabling that consists of two removable panels 100 mm high. The front cover is a one piece panel of 200 mm high. All panels have double returns on each side for added strength.		
Material:	Corner pieces in 2 mm and panels in 1.5 mm mild steel.		
Finish:	RAL 7022 structured powder coating.		
Pack quantity:	1 set of 4 corner pieces including covers. Front and rear panel (2 rear panels for 200 mm high plinths) with mounting accessories. Mounting accessories for side panels PST.		
Mounting requirements:	Add the side panels PST for a complete plinth.		
Plinth	For console	Item no.	
H	W		
100	400	PF1040	
100	500	PF1050	
100	600	PF1060	
100	800	PF1080	
100	1000	PF1100	
100	1200	PF1120	
200	400	PF2040	
200	500	PF2050	
200	600	PF2060	
200	800	PF2080	
200	1000	PF2100	
200	1200	PF2120	

For console 1600 mm wide use 2 x 800 mm wide plinth.

Plinth Side panels, PST

Description:	Mounted directly to the corner pieces.		
Material:	1.5 mm mild steel.		
Finish:	RAL 7022 structured powder coating.		
Pack quantity:	2 side panels, mounting accessories included in PF package.		
Plinth	For console	Item no.	
H	D		
100	400	PST1040	
100	500	PST1050	
200	400	PST2040	
200	500	PST2050	



Plinths, MSNS

Description:	Allowing cabling without any restrictions and in accordance with the VDE 0113 standard. The plinth consists of four corner pieces with removable plates. Available 100 mm and 200 mm high.		
Material:	Corner pieces 3 mm and panels 1.5 mm AISI 304 pre-grained stainless steel.		
Finish:	400 pre-grained stainless steel.		
Pack quantity:	1 plinth with mounting material.		
Plinth	For console	Item no.	
H	W	D	
100	600	400	MSNS1064
100	600	500	MSNS1065
100	800	400	MSNS1084
100	800	500	MSNS1085
100	1000	400	MSNS1104
100	1000	500	MSNS1105
100	1200	400	MSNS1124
100	1200	500	MSNS1125
200	600	400	MSNS2064
200	600	500	MSNS2065
200	800	400	MSNS2084
200	800	500	MSNS2085
200	1000	400	MSNS2104
200	1000	500	MSNS2105
200	1200	400	MSNS2124
200	1200	500	MSNS2125

For consoles 1600 mm wide use 2 x 800 mm wide plinth.



Human Machine Interface

Consoles Range

Accessories

Cover plates, BDP

Description:	Used to cover top opening of base or desk unit in MPC consoles.
Material:	2 mm mild steel.
Finish:	RAL 7035 structured powder paint.
Pack quantity:	1 piece with mounting accessories.
For console	
W	Item no.
600	BDP06R5
800	BDP08R5
1000	BDP10R5
1200	BDP12R5
1600	BDP16R5



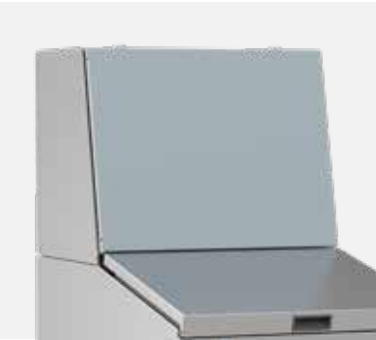
Cover plates, BDPS

Description:	Used to cover top opening of base or desk unit in MPCS consoles.
Material:	2 mm AISI 304 pre-grained stainless steel.
Finish:	400 pre-grained stainless steel.
Pack quantity:	1 piece with mounting accessories.
For console	
W	Item no.
600	BDPS06
800	BDPS08
1000	BDPS10
1200	BDPS12
1600	BDPS16



Stainless panel, MPPS

Description:	For replacing the standard panel on MPC top section units where high corrosion resistance is required.
Material:	2 mm AISI 304 pre-grained stainless steel.
Finish:	400 pre-grained stainless steel.
For console	
W	Item no.
600	MPPS061
800	MPPS081
1000	MPPS101
1200	MPPS121
1600	MPPS161



Stainless lid, MPLS

Description:	For replacing the standard lid on MPC desk units or MPG consoles where high corrosion resistance is required.
Material:	2 mm AISI 304 pre-grained stainless steel.
Finish:	400 pre-grained stainless steel.
For console	
W	Item no.
600	MPLS062
800	MPLS082
1000	MPLS102
1200	MPLS122
1600	MPLS162



Gas spring, MPGR

Description: Gas spring that can replace the standard hinge for the desk. May be used with all standard consoles.

Pack quantity: 2 gas springs with mounting accessories.

Description	Item no.
Gas spring 150 Newton	MPGR150
Gas spring 250 Newton	MPGR250



Human Machine Interface
Swing Arm System | Mild Steel
Control enclosure | OICE

IP 55 | IK 10

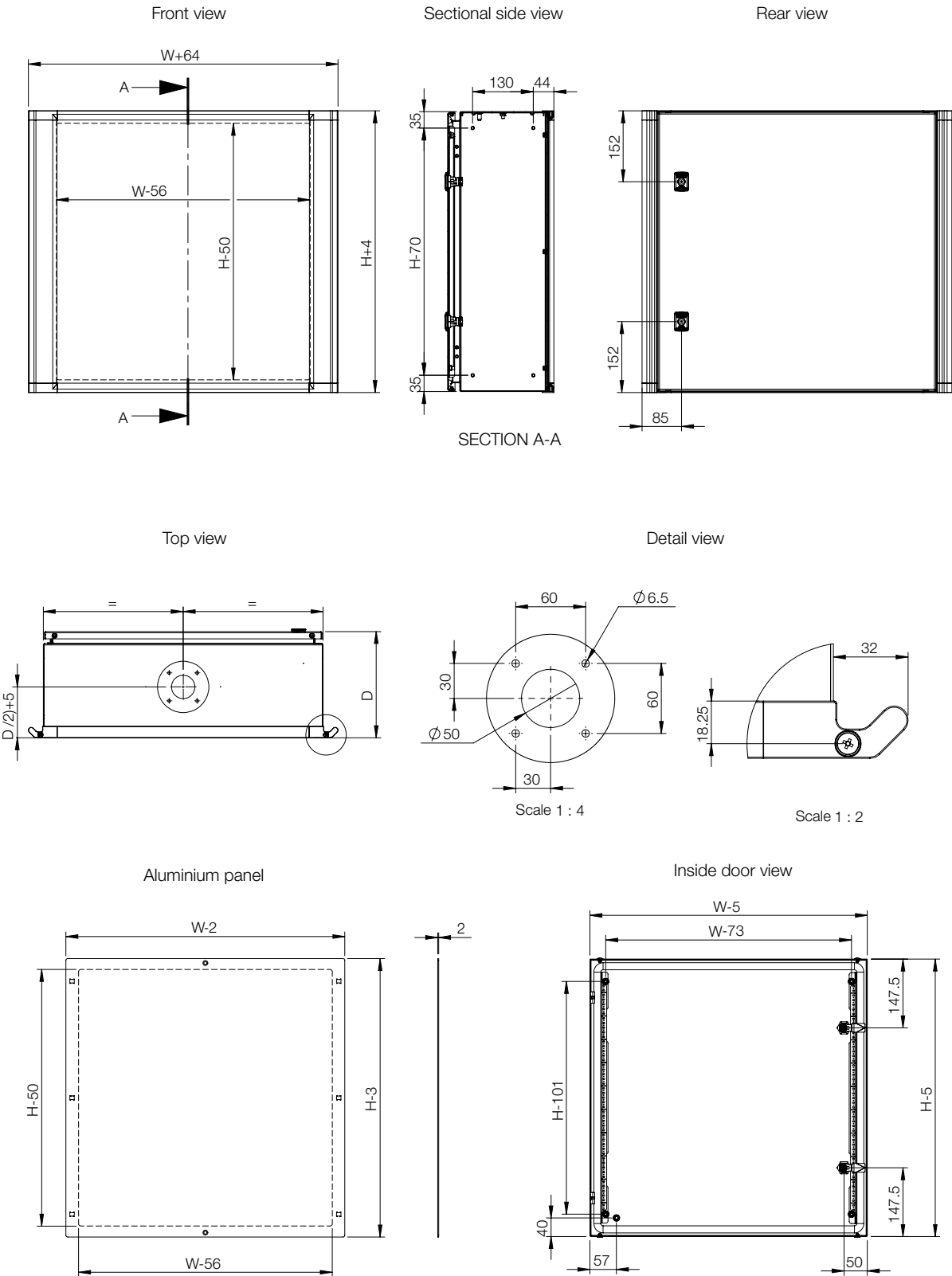


- Material:**
Body and door are manufactured from 1.2 mm mild steel, front cover and handles manufactured from aluminium.
- Body:**
Folded and seam welded, with maximum opening. The front fitted with an aluminium front panel. Handling grips mounted to front, left and right edges.
- Rear door:**
Surface mounted, with 130° opening. Concealed removable hinges, with captive pin. Hinges can be mounted to allow left or right hand opening. Door profiles MMDP are available as an accessory.
- Lock:**
Customised lock, with double grip for easy opening of the door. Double-bit 3 mm insert and 90° movement. Other inserts and locks are available as an accessory.
- Protection:**
IP 55 | IK 10.
- Finish:**
RAL 7035 structured powder coating. Top bottom profile RAL7016.
- Delivery:**
Enclosure with aluminium front panel, rear door, plastic double-bit 3 mm key and mounting accessories.



IP 55 | IK 10

Enclosure dimensions			
H	W	D	Item no.
300	300	155	OICE303015
300	400	210	OICE304021
400	400	210	OICE404021
400	600	210	OICE406021
500	500	210	OICE505021
500	600	210	OICE506021
600	600	210	OICE606021



Human Machine Interface

Operating Housing

Accessories

Mounting plate, BMP-HMI

Description: Steel mounting plate for terminal boxes.

Material: 2 mm galvanized steel.

Pack quantity: 1 piece.

Box dimension		Mounting plate dimensions		Item no.
H	W	h	w	
200	300	175	270	BMP2030
200	400	175	370	BMP2040
200	500	175	470	BMP2050
200	600	180	570	BMP2060



Bottom profile, BPP-HMI

Description: Bottom profile for DIN rail mounting.

Material: Galvanized steel.

Pack quantity: 2 pieces.

For box		Item no.
H/W		
150		BPP15
200		BPP20



Locks, ALL-HMI

Description: Alternative locks to replace the standard one.

Pack quantity: 1 piece.

Description	Type	Protection	Item no.
Chrome plated lock with cylinder	Ronis key n° M21323	IP 65	ALL508
Polyamide lock with cylinder	Key 5333	IP 55	ALL509
Lock with cylinder	Ronis key n° C21323	IP 65	ALL510N



Inserts, ALIS

Description: Inserts to replace the standard double-bit 3 mm insert in the standard ALLS503 lock.

Material: Zamak chrome plated.

Pack quantity: 1 piece.

Description	Item no.
Double-bit 3 mm	ALIS503
Double-bit 5 mm	ALIS505
Square 7 mm	ALIS523
Triangular 8 mm	ALIS524
Square 8 mm	ALIS525
Slotted 2x4 mm	ALIS528

Not suitable for AFS.



Door mounting profiles, MMDP-HMI

Description: To strengthen the door and provide further mounting possibilities. Mounted on the inside of the door onto M6 welded studs. Equipped with a 10 mm hole pattern. These door profiles cannot be used with the AFS enclosure range.

Material: 1.2 mm galvanized steel.

Dimension: 15 x 14 mm.

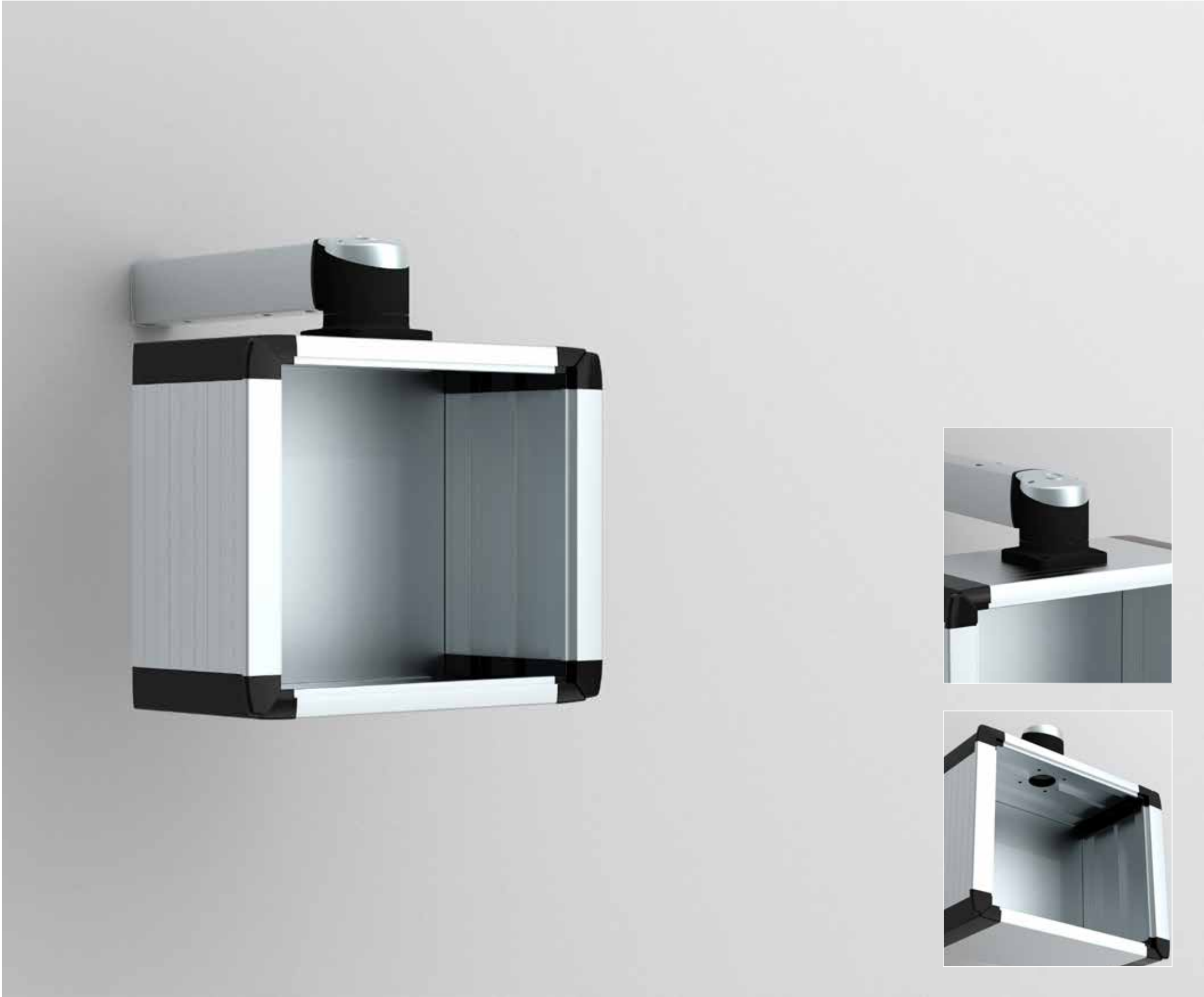
Pack quantity: 1 pair with mounting accessories.

For enclosure		Item no.
H		
400		MMDP040
500		MMDP050



Human Machine Interface
Swing Arm System | Aluminium
Control Panel | OICP

IP 65



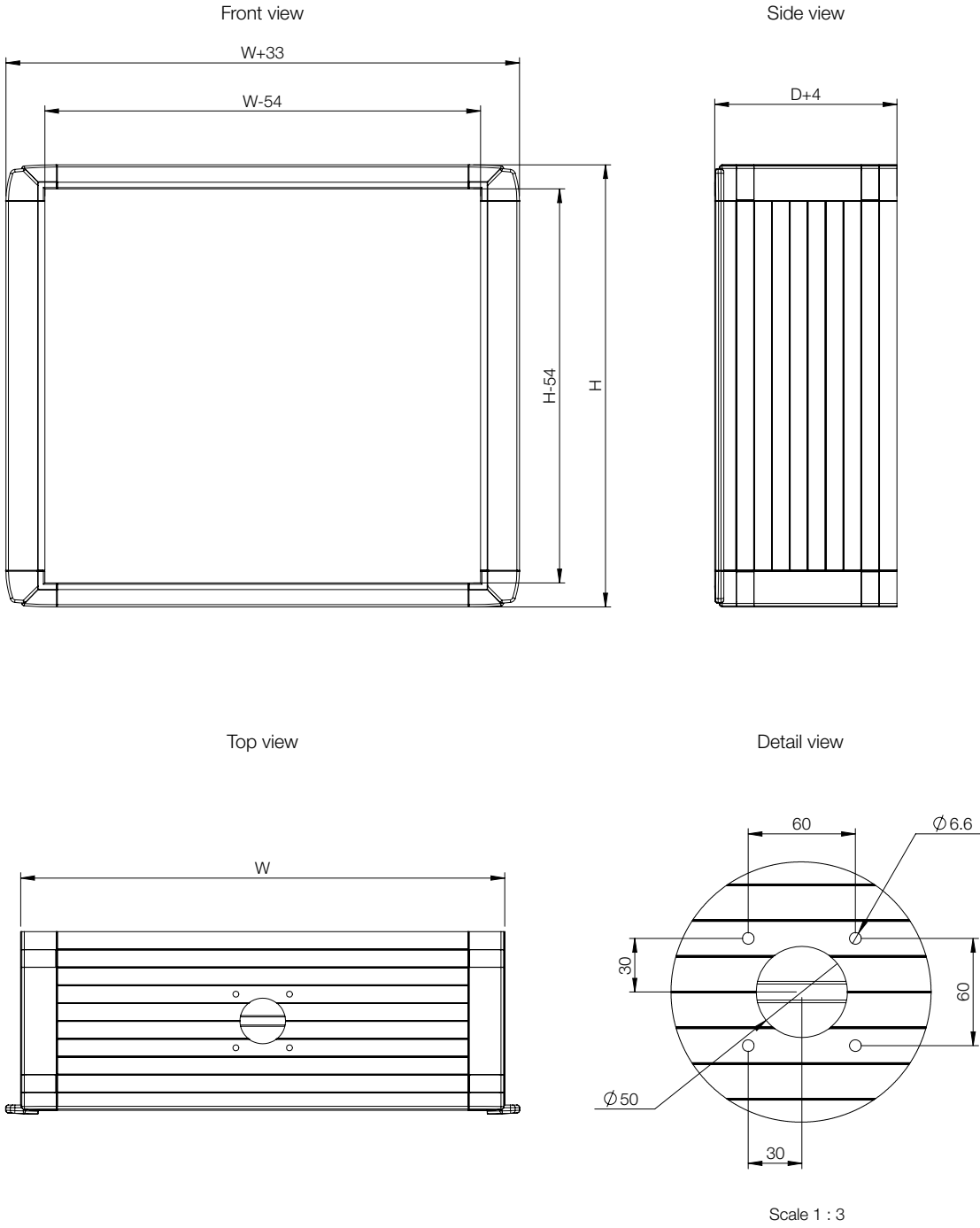
- Material:**
Body: Al Mg Si05. Rear plate: Al Mg. Corners: AISI 12.
- Protection:**
IP 65.
- Finish:**
Body and rear plate: anodised aluminium. Corners: RAL 7016.
- Mounting requirements:**
OIFP front panel is not included in the standard delivery and needs to be ordered separately.
- Delivery:**
Body, screwed rear plate, front plate mounting kit, and mounting accessories.



IP 65

H	W	D	Weight (kg)	Item no.
309	525	200	7.90	OICP305220
345	395	200	7.00	OICP343920
354	525	200	8.30	OICP355220
398	525	200	9.00	OICP395220
415	470	200	8.50	OICP414720
495	542	200	10.25	OICP495420

The external enclosure dimension is increased by 16.5 mm, on the side where there is a grip profile.



Human Machine Interface

Operating Housing

Accessories

OICP panel with door extension section, OIDES

Description: OICP panel with hinged door extension profile. It increases the OICP panel depth in 55 mm. It has grid profiles in the door extension profile sides.

Material: Body and door extension profile: Al Mg Si05. Rear plate: Al Mg. Corners: Al Si12.

Protection: Complies with IP 65.

Finish: Body, door extension profile and rear plate: anodised aluminium. Corners: RAL 7016.

Pack quantity: OICP panel with rear plate, door extension profile, external hinges, and locking system.

For enclosure			
H	W	D	Item no.
309	525	55+200	OIDES305205
345	395	55+200	OIDES343905
354	525	55+200	OIDES355205
398	525	55+200	OIDES395205
415	470	55+200	OIDES414705
495	542	55+200	OIDES495405



Front plate, OIFP

Description: Front plate for components, with a protection film in one side.

Material: 3 mm aluminium.

Pack quantity: 1 piece. Mounting accessories are supplied with the control panel OICP and in OIDES.

For enclosure				
H	W	h	w	Item no.
269	485	255	471	OIFP3052
305	355	291	341	OIFP3439
314	485	300	471	OIFP3552
358	485	344	471	OIFP3952
375	430	361	416	OIFP4147
455	502	441	488	OIFP4954



Spring nut set, OISN

Description: Spring nuts for fixing components easily, without any machining in the panel.

Pack quantity: 10 pieces.

Thread	Item no.
M4	OISN04
M5	OISN05



Keyboard support, OIKS

Description: Keyboard support to be fixed to the control panel. Machining is required.

Material: Mild steel. Stainless steel available on request.

Finish: RAL 9006.

Pack quantity: 1 piece with mounting accessories.

Item no.
OIKS01



Command handle, OICH

Description: Handle with ergonomic design, which enables easy handling of the panel, even with working gloves. Machining is required.

Material: Aluminium.

Finish: Anodised aluminium.

Pack quantity: 1 piece.

W	Item no.
250	OICH250
350	OICH350



120° connecting brackets, OIPC

Description: Rigid elements for connecting two OICP control panels. Machining is required.

Material: Aluminium.

Finish: RAL 9006.

Pack quantity: 2 pcs with mounting accessories.

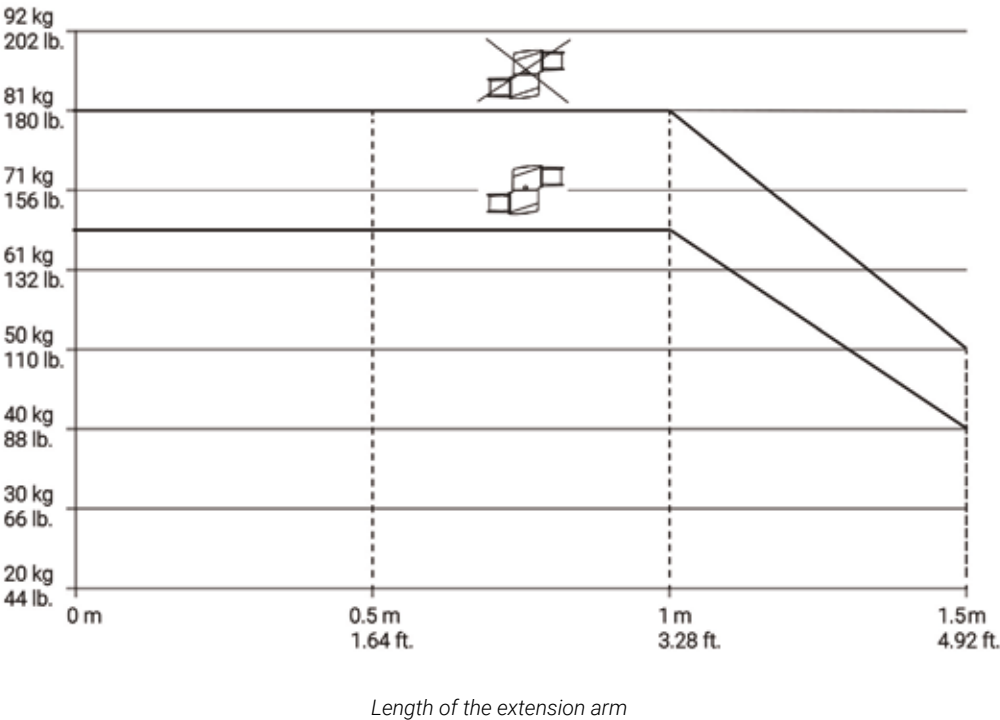
Item no.
OIPC01



Human Machine Interface

Swing Arm System

Light swing arm system, S1



Human Machine Interface

Swing Arm System

Accessories

Operator arm profile, light, S1MT

Additional information:

Aluminum tubes provide structural integrity and act as conduit for equipment wiring. Tubes attach to system components with 6 setscrews on each end of the tube. Setscrews are provided with system couplings, not the tubes. Setscrews allow for easy adjustment and leveling of the system. Setscrews are provided with thread sealer providing secure connections. Available in 6 standard lengths ranging from 250 mm (9.84) to 1500 mm (59.05). Tubes 750 mm (29.53) and longer include drilling template to assist with drilling and tapping the holes when tube is cut to length.

Note:

The maximum weight which a light swing arm can support depends on the length of the arm and the system structure. See diagram in the mounting instructions.

Length	Height	Width	Item no.
250	75	55	S1MT250
500	75	55	S1MT500
750	75	55	S1MT750
1000	75	55	S1MT1000
1250	75	55	S1MT1250
1500	75	55	S1MT1500



Elbow, light, S1ME

Additional information:

The elbow provides a 90-degree bend in the suspension system. Die-cast aluminum construction. Includes installation instructions, gaskets, and tube setscrews.

Note:

The maximum weight which a light swing arm can support depends on the length of the arm and the system structure. See diagram in the mounting instructions.

Item no.
S1ME



Intermediate joint, light, S1MIJ

Additional information:

Use an intermediate joint to join two horizontal tubes together for a longer length. The arm can be rotated 300 degrees. Includes safety stop and maintenance-free bearings. Die-cast aluminum construction. Includes installation instructions, gaskets, and tube setscrews. Use of the intermediate joint reduces the system load rating capacity to 146 lb. (66 kg) at 3.3 ft. (1 m).

Note:

The maximum weight which a light swing arm can support depends on the length of the arm and the system structure. See diagram in the mounting instructions.

Item no.
S1MIJ



Wall joint vertical, light, S1MWJV

Additional information:

The vertical wall joint mounts the suspension system to a vertical surface, allowing the tube to extend vertically. The arm can be rotated 300 degrees. Includes a safety stop and maintenance-free bearings. Die-cast aluminum construction. Includes installation instructions, gaskets, and tube setscrews. Surface mounting hardware is not provided.

Note:

The maximum weight which a light swing arm can support depends on the length of the arm and the system structure. See diagram in the mounting instructions.

Item no.
S1MWJV



Rotatable elbow, light, S1MER

Additional information:

The rotatable elbow provides a 90-degree bend in the suspension system and allows the vertical tube to rotate 300 degrees. Includes safety stop and maintenance-free bearings. Die-cast aluminum construction. Includes installation instructions, gaskets, and tube setscrews.

Note:

The maximum weight which a light swing arm can support depends on the length of the arm and the system structure. See diagram in the mounting instructions.

Item no.
S1MER



Wall joint horizontal, light, S1MWJH

Additional information:

The horizontal wall joint mounts the suspension system to a vertical surface, allowing the tube to extend horizontally. The arm can be rotated 300 degrees. Includes a safety stop and maintenance-free bearings. Die-cast aluminum construction. Includes installation instructions, gaskets, and tube setscrews. Surface mounting hardware is not provided.

Note:

The maximum weight which a light swing arm can support depends on the length of the arm and the system structure. See diagram in the mounting instructions.

Item no.
S1MWJH



Human Machine Interface

Swing Arm System

Accessories

Coupling HMI, light, S1MFC

Additional information:

The flange coupling attaches a tube to the enclosure, enabling 300-degree enclosure rotation and can be locked into a given position. The flange coupling has a safety stop and maintenance-free bearings. Die-cast aluminum construction. Includes installation instructions, gaskets, tube setscrews and enclosure mounting hardware.

Note:

The maximum weight which a light swing arm can support depends on the length of the arm and the system structure. See diagram in the mounting instructions.

Item no.
S1MFC



Elbow coupling HMI, light, S1MFEC

Additional information:

The flange elbow coupling attaches directly to the enclosure for applications where a vertical tube is not required. It enables the enclosure to rotate 300 degrees and can be locked into a given position. The flange elbow coupling has a safety stop and maintenance-free bearings. Die-cast aluminum construction. Includes installation instructions, gaskets, tube setscrews and enclosure mounting hardware.

Note:

The maximum weight which a light swing arm can support depends on the length of the arm and the system structure. See diagram in the mounting instructions.

Item no.
S1MFEC



Narrow adaper, light, S1MA

Additional information:

The Narrow Adapter can be attached to the Flange Coupling and Flange Elbow Coupling to create a narrower connection to an enclosure. Specifically designed for use with the Suspend Aluminum HMI Enclosures that have 66mm of usable space. Does not inhibit coupling functionality. Die-cast aluminum construction. Includes installation instructions, gaskets, and mounting hardware.

Note:

The maximum weight which a light swing arm can support depends on the length of the arm and the system structure. See diagram in the mounting instructions.

Item no.
S1MA



Horiz. panel coupling,light, S1MPCH

Additional information:

The horizontal panel coupling mounts a horizontal tube to the back of an enclosure or screen using Video Electronics Standards Association (VESA) mounting. The coupling has mounting holes drilled for standard VESA 75 and 100 flange sizes. It enables the enclosure to rotate 300 degrees and can be locked into a given position. The horizontal panel coupling has a safety stop and maintenance-free bearings. Die-cast aluminum construction. Includes installation instructions, gaskets, tube setscrews and enclosure mounting hardware.

Note:

The maximum weight which a light swing arm can support depends on the length of the arm and the system structure. See diagram in the mounting instructions.

Item no.
S1MPCH



Vertical panel coupling, light, S1MPCV

Additional information:

he vertical panel coupling mounts a vertical tube to the back of an enclosure or screen using Video Electronics Standards Association (VESA) mounting. The coupling has mounting holes drilled for standard VESA 75 and 100 flange sizes. It enables the enclosure to rotate 300 degrees and can be locked into a given position. The vertical panel coupling has a safety stop and maintenance-free bearings. Die-cast aluminum construction. Includes installation instructions, gaskets, tube setscrews and enclosure mounting hardware.

Note:

The maximum weight which a light swing arm can support depends on the length of the arm and the system structure. See diagram in the mounting instructions.

Item no.
S1MPCV



Reduction elbow, light, S1MRE

Additional information:

The reduction elbow provides a 90-degree bend in the suspension system between the horizontal tube and base connection of the Syspend 281-Max system and the vertical components of the Syspend 180-Max system. Die-cast aluminum construction. Available in RAL 9005 black finish only. Includes installation instructions, gaskets, and tube setscrews. Use of the reduction elbow with the Syspend 281-Max base and tube increases the system load rating to 281 lb. (127 kg) at 3.3 ft. (1 m).

Note:

The maximum weight which a light swing arm can support depends on the length of the arm and the system structure. See diagram in the mounting instructions.

Item no.
S1MRE



Human Machine Interface

Swing Arm System

Accessories

Base/ wall bracket, light, S1MWF

Additional information:

The wall flange allows for fixed positioning on a horizontal or vertical surface when rotation is not needed. Die-cast aluminum construction. Includes installation instructions, gaskets, and tube setscrews. Surface mounting hardware is not provided.

Note:

The maximum weight which a light swing arm can support depends on the length of the arm and the system structure. See diagram in the mounting instructions.

Item no.
S1MWF



Rotation limiter (aluminum), S1MRL

Additional information:

Rotation limiters are a retro-fit option to limit the rotation of couplings and joints which normally rotate 300 degrees. Each block limits rotation 30 degrees. Kit includes six rotation limiting blocks and installation instructions.

Note:

The maximum weight which a light swing arm can support depends on the length of the arm and the system structure. See diagram in the mounting instructions.

Item no.
S1MRL



Rotary base bracket, light, S1MTBB

Additional information:

The rotatable base bracket allows the entire suspension system to rotate at the point of attachment on a horizontal surface. The arm can be rotated 300 degrees. Includes a safety stop and maintenance-free bearings. Die-cast aluminum construction. Includes installation instructions, gaskets, and tube setscrews. Surface mounting hardware is not provided.

Note:

The maximum weight which a light swing arm can support depends on the length of the arm and the system structure. See diagram in the mounting instructions.

Item no.
S1MTBB



Signal light adapter,round, S1MSLAR

Additional information:

The signal light adapters are available in either round, elbow and reduction elbow cover versions and provide a means for attaching signal lights. Signal lights are not included. Aluminum caps are finished in RAL 9006 white aluminum powder paint. Includes caps, gasket, attachment hardware, and post.

Note:

The maximum weight which a light swing arm can support depends on the length of the arm and the system structure. See diagram in the mounting instructions.

Item no.
S1MSLAR



Set up joint, light, S1MSJ

Additional information:

The set-up joint mounts the suspension system to a horizontal surface. The arm can be rotated 300 degrees. Includes a safety stop and maintenance-free bearings. Die-cast aluminum construction. Includes installation instructions, gaskets, and tube setscrews. Surface mounting hardware is not provided.

Note:

The maximum weight which a light swing arm can support depends on the length of the arm and the system structure. See diagram in the mounting instructions.

Item no.
S1MSJ



Signal light adapter, angled, S1MSLAA

Additional information:

The signal light adapters are available in either round, elbow and reduction elbow cover versions and provide a means for attaching signal lights. Signal lights are not included. Aluminum caps are finished in RAL 9006 white aluminum powder paint. Includes caps, gasket, attachment hardware, and post.

Note:

The maximum weight which a light swing arm can support depends on the length of the arm and the system structure. See diagram in the mounting instructions.

Item no.
S1MSLAA



Human Machine Interface

Swing Arm System

Accessories

Signal light adapter, reduction, S1MSLARE

Additional information:

The signal light adapters are available in either round, elbow and reduction elbow cover versions and provide a means for attaching signal lights. Signal lights are not included. Aluminum caps are finished in RAL 9006 white aluminum powder paint. Includes caps, gasket, attachment hardware, and post.

Note:

The maximum weight which a light swing arm can support depends on the length of the arm and the system structure. See diagram in the mounting instructions.

Item no.
S1MSLARE



Replacement cap kit,reduction, S1MRCREK

Additional information:

Replacement Caps for Syspend 180 Max couplings are available in either round, elbow or reduction elbow versions. The hardware is included. The caps are aluminum finished in RAL 9006 white aluminum powder paint.

Note:

The maximum weight which a light swing arm can support depends on the length of the arm and the system structure. See diagram in the mounting instructions.

Item no.
S1MRCREK



Replacement cap kit,round, S1MRCRK

Additional information:

Replacement Caps for Syspend 180 Max couplings are available in either round, elbow or reduction elbow versions. The hardware is included. The caps are aluminum finished in RAL 9006 white aluminum powder paint.

Note:

The maximum weight which a light swing arm can support depends on the length of the arm and the system structure. See diagram in the mounting instructions.

Item no.
S1MRCRK



Replacement hardware kit, S1MRHK

Additional information:

The replacement hardware kit includes spare parts necessary within the Syspend 180 Max system. Kit Includes: 1 lock actuator; 1 lever clamp; 1 coupling gasket; 2 flat small gaskets; 4 M6 allen head screws; 4 M6 lock washers; 12 M10 headless setscrews; 1 flat large gasket; 6 M12 headless setscrews; .5 meters of 3mm cord gasket

Note:

The maximum weight which a light swing arm can support depends on the length of the arm and the system structure. See diagram in the mounting instructions.

Item no.
S1MRHK



Replacement cap kit,angled, S1MRCAK

Additional information:

Replacement Caps for Syspend 180 Max couplings are available in either round, elbow or reduction elbow versions. The hardware is included. The caps are aluminum finished in RAL 9006 white aluminum powder paint.

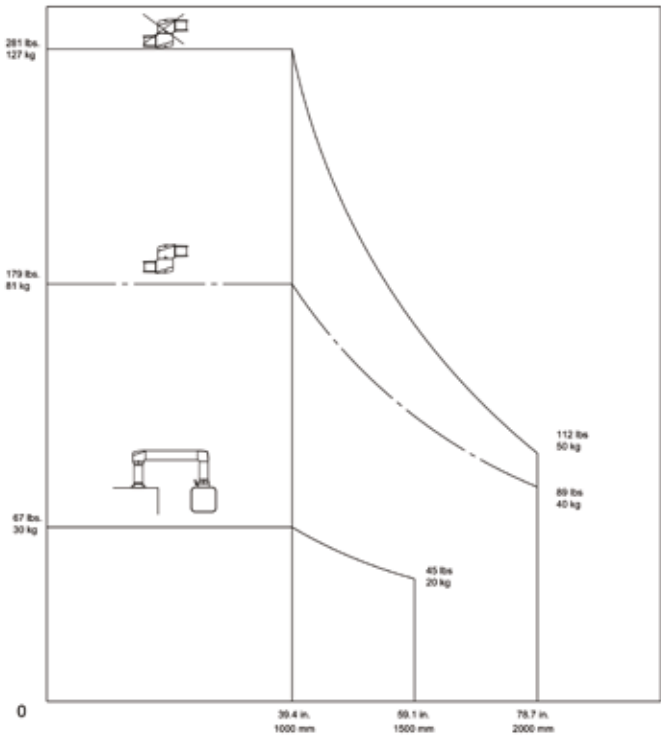
Note:

The maximum weight which a light swing arm can support depends on the length of the arm and the system structure. See diagram in the mounting instructions.

Item no.
S1MRCAK



Human Machine Interface
Swing Arm System
Medium swing arm system, S2



Length of the extension arm



Human Machine Interface

Swing Arm System

Accessories

Operator arm profile, S2MT

Additional information:

Angled aluminum tubes provide structural integrity and act as conduit for equipment wiring. Tubes attach to system components with 6 setscrews on each end of the tube. (Setscrews are provided with the mating system components, not the tubes.) Setscrews allow for easy adjustment and leveling of the system. Setscrews are provided with LOCTITE™ to seal threaded holes and provide secure connections. Available in 8 standard lengths ranging from 250 mm to 2000 mm. Tubes 750 mm and longer include drilling template to assist with drilling and tapping the holes when the tube is cut to length.

Note:

The maximum weight a medium swing arm can support depends on the length of the arm and the system structure. See diagram in the mounting instructions.

Length	Height	Width	Item no.
250	90	70	S2MT250
500	90	70	S2MT500
750	90	70	S2MT750
1000	90	70	S2MT1000
1250	90	70	S2MT1250
1500	90	70	S2MT1500
1750	90	70	S2MT1750
2000	90	70	S2MT2000



Rotary base bracket, S2MRB

Additional information:

Rotary Base allows the entire suspension system to rotate at the point of attachment on a horizontal surface. The arm can be rotated or turned 300 degrees. Includes safety stop and maintenance-free bearing. RAL 9005 black finish. Die-cast aluminum construction. Includes installation instructions, gaskets and tube setscrews. Surface mounting hardware is not provided.

Note:

The maximum weight a medium swing arm can support depends on the length of the arm and the system structure. See diagram in the mounting instructions.

Item no.
S2MRB



Set up joint, S2MSJ

Additional information:

Set-Up Joint mounts suspension system to a horizontal surface. The arm can be rotated or turned 300 degrees. Includes safety stop and maintenance-free bearing. RAL 9005 black finish. Die-cast aluminum construction. Includes removable cable access cover, installation instructions, gaskets and tube setscrews. Surface mounting hardware is not provided.

Note:

The maximum weight a medium swing arm can support depends on the length of the arm and the system structure. See diagram in the mounting instructions.

Item no.
S2MSJ



Wall joint Vertical, S2MWJV

Additional information:

Vertical Wall Joint mounts suspension system to vertical surface and allows tube to extend vertically. Enables the arm to be rotated or turned 300 degrees. Includes safety stop and maintenance-free bearing. RAL 9005 black finish. Die-cast aluminum construction. Includes removable cable access cover, installation instructions, gaskets and tube setscrews. Surface mounting hardware is not provided.

Note:

The maximum weight a medium swing arm can support depends on the length of the arm and the system structure. See diagram in the mounting instructions.

Item no.
S2MWJV



Wall joint horizontal, S2MWJH

Additional information:

Horizontal Wall Joint mounts suspension system to vertical surface, allowing tube to extend horizontally. The arm can be rotated or turned 300 degrees. Includes safety stop and maintenance-free bearing. RAL 9005 black finish. Die-cast aluminum construction. Includes two removable cable access covers, installation instructions, gaskets and tube setscrews. Surface mounting hardware is not provided.

Note:

The maximum weight a medium swing arm can support depends on the length of the arm and the system structure. See diagram in the mounting instructions.

Item no.
S2MWJH



Elbow, S2ME

Additional information:

Elbow provides a 90-degree bend in the suspension system. RAL 9005 black finish. Die-cast aluminum construction. Includes removable cable access cover, installation instructions, gaskets and tube setscrews.

Note:

The maximum weight a medium swing arm can support depends on the length of the arm and the system structure. See diagram in the mounting instructions.

Item no.
S2ME



Human Machine Interface

Swing Arm System

Accessories

Rotation elbow, S2MER

Additional information:

Rotatable elbow provides a 90-degree bend in the suspension system and allows the vertical tube to rotate 300 degrees. Includes safety stop and maintenance-free bearing. RAL 9005 black finish. Die-cast aluminum construction. Includes removable cable access cover, installation instructions, gaskets and tube setscrews.

Note:

The maximum weight a medium swing arm can support depends on the length of the arm and the system structure. See diagram in the mounting instructions.

Item no.
S2MER



Elbow couple kit, S2MFEC

Additional information:

Flange Elbow Coupling attaches directly to the enclosure for applications where a vertical tube is not required. Enables the enclosure to be rotated 300 degrees and locked in position. Includes safety stop and maintenance-free bearing. RAL 9005 black finish. Die-cast aluminum construction. Includes cable access cover, installation instructions, gaskets, tube setscrews and enclosure mounting hardware.

Note:

The maximum weight a medium swing arm can support depends on the length of the arm and the system structure. See diagram in the mounting instructions.

Item no.
S2MFEC



Intermediate joint, S2MIJ

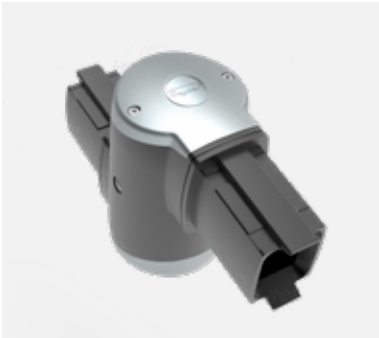
Additional information:

Use Intermediate Joint to join two horizontal tubes together for a longer run. The arm can be rotated or turned 300 degrees. Includes safety stop and maintenance-free bearing. RAL 9005 black finish. Die-cast aluminum construction. Includes two removable cable access covers, installation instructions, gaskets and tube setscrews. Use of the Intermediate Joint reduces the system load capacity to 179 lb. (81.2 kg) at 3.3 ft. (1 m).

Note:

The maximum weight a medium swing arm can support depends on the length of the arm and the system structure. See diagram in the mounting instructions.

Item no.
S2MIJ



Tube adapter, S2MTA

Additional information:

Use a Tube Adapter when the tube is cut to length and it is not desirable to drill and tap new holes in the tube. The adapter attaches to the tube with internal setscrews and provides mounting holes at the end where the tube was cut. RAL 9005 black finish. Die-cast aluminum construction. Includes installation instructions, gasket and hardware for attaching to the tube.

Note:

The maximum weight a medium swing arm can support depends on the length of the arm and the system structure. See diagram in the mounting instructions.

Item no.
S2MTA



Couple kit HMI, S2MFC

Additional information:

Flange Coupling attaches a tube to the enclosure, enabling 300-degree enclosure rotation. The enclosure can be locked in position. Flange Coupling has safety stop and maintenance-free bearing. RAL 9005 black finish. Die-cast aluminum construction. Includes installation instructions, gaskets, tube setscrews and enclosure mounting hardware.

Note:

The maximum weight a medium swing arm can support depends on the length of the arm and the system structure. See diagram in the mounting instructions.

Item no.
S2MFC



Angled coupling tilted back, S2MACB

Additional information:

Use Angled Coupling Tilted Backward to mount enclosure at a 15-degree backward angle. The enclosure can be rotated 300 degrees and locked in position. Includes safety stop and maintenance-free bearing. RAL 9005 black finish. Die-cast aluminum construction. Includes installation instructions, gaskets, tube setscrews and enclosure mounting hardware.

Note:

The maximum weight a medium swing arm can support depends on the length of the arm and the system structure. See diagram in the mounting instructions.

Item no.
S2MACB



Human Machine Interface
Swing Arm System

Accessories

Angled coupling tilted forward, S2MACF

Additional information:

Use Angled Coupling Tilted Forward to mount enclosure at a 15-degree forward angle. The enclosure can be rotated 300 degrees and locked in position. Includes safety stop and maintenance-free bearing. RAL 9005 black finish. Die-cast aluminum construction. Includes installation instructions, gaskets, tube setscrews and enclosure mounting hardware.

Note:

The maximum weight a medium swing arm can support depends on the length of the arm and the system structure. See diagram in the mounting instructions.

Item no.
S2MACF



Base coupling, S2MBC

Additional information:

Base Coupling attaches the enclosure directly to a horizontal surface. The enclosure can be rotated 300 degrees and locked in position. Includes safety stop and maintenance-free bearing. RAL 9005 black finish. Die-cast aluminum construction. Includes installation instructions, gaskets and enclosure mounting hardware. Surface mounting hardware is not provided.

Note:

The maximum weight a medium swing arm can support depends on the length of the arm and the system structure. See diagram in the mounting instructions.

Item no.
S2MBC



Angled adapter, S2MAA

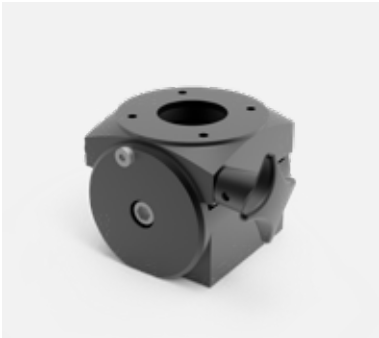
Additional information:

Angled Adapter must be used in conjunction with a coupling (not compatible with S2MFC48). The enclosure angle can be adjusted forward or backward up to 30 degrees. RAL 9005 black finish. Die-cast aluminum construction. Includes installation instructions, gasket and enclosure mounting hardware. Maximum load bearing capacity is 67 lb. (30.4 kg).

Note:

The maximum weight a medium swing arm can support depends on the length of the arm and the system structure. See diagram in the mounting instructions.

Item no.
S2MAA



Base/ wall flange, S2MWF

Additional information:

Wall Flange allows for fixed positioning on a horizontal or vertical surface when rotation is not needed. RAL 9005 black finish. Die-cast aluminum construction. Includes installation instructions, gaskets and tube setscrews. Surface mounting hardware is not provided.

Note:

The maximum weight a medium swing arm can support depends on the length of the arm and the system structure. See diagram in the mounting instructions.

Item no.
S2MWF



48-mm round tube flange coupling medium, S2MFC48

Additional information:

Flange Coupling to attach the Vertical Motion Pedestal Tube to the enclosure. The enclosure can be rotated 300 degrees and locked in position. Includes safety stop and maintenance-free bearing. RAL 9005 black finish. Die-cast aluminum construction. Includes installation instructions, gaskets and enclosure mounting hardware. Coupling attaches to enclosure using a 48 x 48-mm hole pattern. An adapter is required to attach the coupling to a standard Hoffman HMI enclosure that uses a 60 x 60-mm hole pattern (i.e., required for attaching to Concept HMI, CC2000, CC4000). Includes safety stop and maintenance-free bearing. RAL 9005 black finish. Die-cast aluminum construction. Includes installation instructions, gaskets and enclosure mounting hardware.

Note:

The maximum weight a medium swing arm can support depends on the length of the arm and the system structure. See diagram in the mounting instructions.

Item no.
S2MFC48



48-mm round tube flange adapt., S2MA48

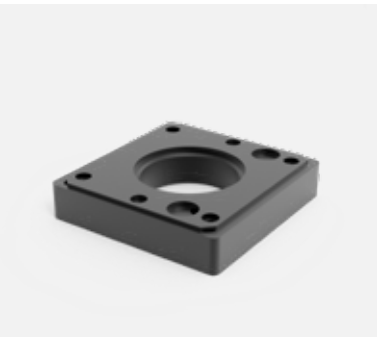
Additional information:

Use Flange Coupling to attach the Vertical Motion Pedestal Tube to the enclosure. The enclosure can be rotated 300 degrees and locked in position. Includes safety stop and maintenance-free bearing. RAL 9005 black finish. Die-cast aluminum construction. Includes installation instructions, gaskets and enclosure mounting hardware. Coupling attaches to enclosure using a 48 x 48-mm hole pattern. An adapter is required to attach the coupling to a standard Hoffman HMI enclosure that uses a 60 x 60-mm hole pattern (i.e., required for attaching to Concept HMI, CC2000, CC4000). Includes safety stop and maintenance-free bearing. RAL 9005 black finish. Die-cast aluminum construction. Includes installation instructions, gaskets and enclosure mounting hardware.

Note:

The maximum weight a medium swing arm can support depends on the length of the arm and the system structure. See diagram in the mounting instructions.

Item no.
S2MA48



Human Machine Interface

Swing Arm System

Accessories

Vertical motion pedestal, S2M10VP

Additional information:

Height-adjustable tubes allow enclosure to be positioned at the optimal viewing height for different operators. Requires the 48-mm Round Tube Flange Coupling (S2MFC48) and Adapter (S2MA48) for attachment to Hoffman enclosures with a 60 x 60-mm hole pattern (i.e., required for attaching to Concept HMI, CC2000, CC4000). Adjustable from 1130 mm (44.49 in.) to 1380 mm (54.33 in.) with internal gas springs.

Four models support loads ranging from 11 to 77 lb. (4.9 to 34.9 kg). Height is fixed in place at any position by the locking handle. Cables are separated from gas springs inside the tube. Internal strain-relief for cables inside the tube. Can be attached to Small Pedestal Base, Large Pedestal Base, Vertical Wall Joint, Wall Flange, Rotary Base, Elbow or Rotatable Elbow.

Aluminum construction.

Tube cannot be inverted for overhead mounting on the enclosure.

The weight of the coupling, adapter plate, enclosure and internal components must be factored into the load when selecting a tube.

Note:

The maximum weight a medium swing arm can support depends on the length of the arm and the system structure. See diagram in the mounting instructions.

Item no.	Load capacity
S2M10VP22	22 lb, 10 kg
S2M10VP37	37 lb, 17 kg
S2M10VP57	57 lb, 26 kg
S2M10VP77	77 lb, 35 kg



Small pedestal base, S2MPBS

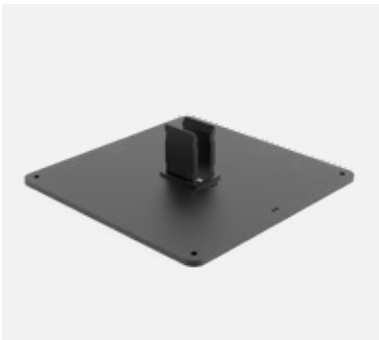
Additional information:

Tubes attach directly to Small Pedestal Base. RAL 9005 black finish. Constructed from 3/8-in. thick steel plate. Includes installation instructions, cable ties and tube setscrews. Surface mounting hardware is not provided. Compatible with accessory casters and levelers. Supports loads per Load Rating Graph.

Note:

The maximum weight a medium swing arm can support depends on the length of the arm and the system structure. See diagram in the mounting instructions.

Item no.
S2MPBS



Light signal adapter rectangle, S2MLSAE

Additional information:

Light signal adapters are available in either round or elbow cover versions and provide a means for attaching signal lights. Signal lights are not included. Gray composite cover caps include a gasket, attachment hardware and post and replace the caps provided with other system components.

Note:

The maximum weight a medium swing arm can support depends on the length of the arm and the system structure. See diagram in the mounting instructions.

Item no.
S2MLSAE



Light signal adapter round, S2MLSAR

Additional information:

Light signal adapters are available in either round or elbow cover versions and provide a means for attaching signal lights. Signal lights are not included. Gray composite cover caps include a gasket, attachment hardware and post and replace the caps provided with other system components.

Note:

The maximum weight a medium swing arm can support depends on the length of the arm and the system structure. See diagram in the mounting instructions.

Item no.
S2MLSAR



Rotation limiters, S2MRL

Additional information:

Rotation limiters can be retro-fitted on coupling and joint components and are adjustable in increments of 13.7 degrees. Limits rotation of couplings and joints which normally rotate 300 degrees. The kit includes ten steel balls, plug and installation instructions.

Note:

The maximum weight a medium swing arm can support depends on the length of the arm and the system structure. See diagram in the mounting instructions.

Item no.
S2MRL



Tube hole plugs, S2MTHP

Additional information:

Plastic hole plugs cover up the set screws in the tubes. Kit includes 50 hole plugs. Hole plugs are not needed to maintain the suspension system's NEMA Type 12 rating but provide an attractive smooth finish for the tube. RAL 9006 white aluminum color.

Note:

The maximum weight a medium swing arm can support depends on the length of the arm and the system structure. See diagram in the mounting instructions.

Item no.
S2MTHP

