



06

Cable Management

Cable Glands

Plastic cable glands, CPG	578
Simple protection cables entry, CES	579
Double protection cables entry, CED	580
Cable anchorage glands, CAG	581

Cable Entry Gland Plates

Cable entry gland plate, CEP	582
Round cable entry gland plate, CEPR	583
Connected cable entry gland plate, CCF	584
Cable entry grommet, CCG	585
Plastic cable plates, EHTC	586

Plastic cable glands, CPG

Description:	Traditional cable fittings. Known for excellent strain relief even while providing a high protection class. Plastic lock nuts for fixation are included in the delivery.
Material:	Fitting body made of polyamide PA6, and sealing made of neoprene.
Temperature resistance:	-20°C to +100°C.
Flammability:	V-2 according to UL94.
Finish:	RAL 7035.
Protection:	IP 66

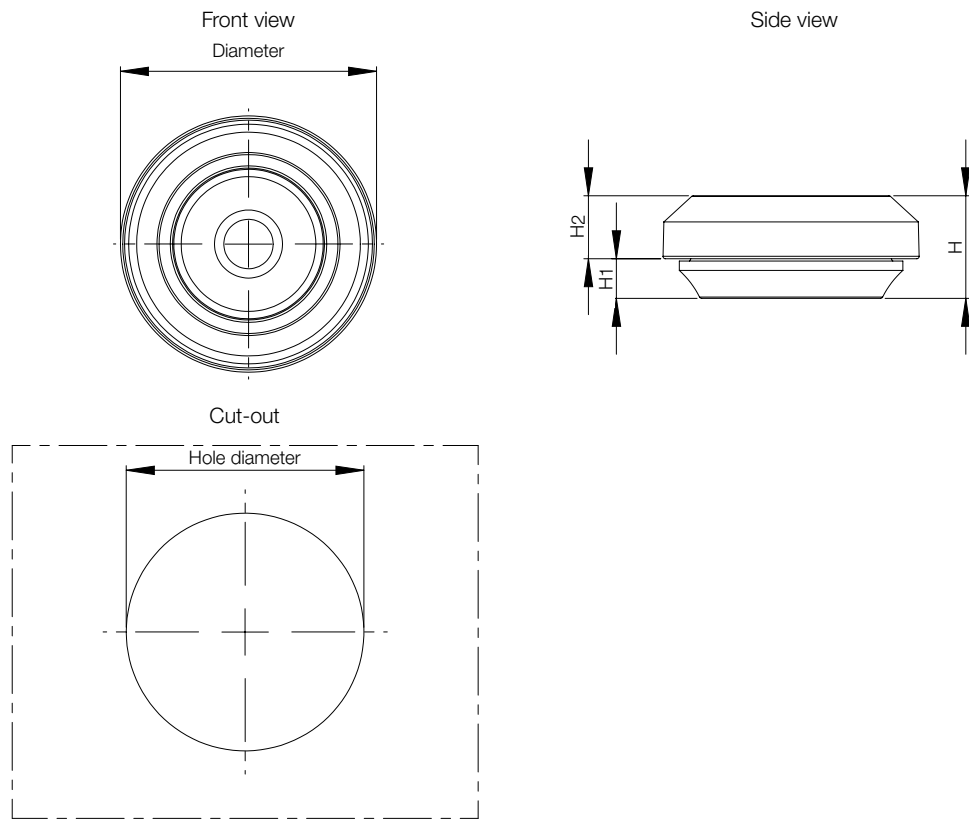
Thread	Cable Size	Pack quantity	Item no.
M12 x 1.5	3 - 6.5	100	CPG12
M16 x 1.5	5 - 10	50	CPG16
M20 x 1.5	6 - 12	50	CPG20
M25 x 1.5	13 - 18	50	CPG25
M32 x 1.5	18 - 25	20	CPG32
M40 x 1.5	22 - 32	10	CPG40
M50 x 1.5	30 - 38	5	CPG50
M63 x 1.5	34 - 44	5	CPG63



Simple protection cables entry, CES

Description:	Simple grommet manufactured in a rubber-like material. The installation does not require tools. The "pushout" membrane is a permanent seal until it is penetrated by a cable or pipe. It is equipped with a sock that closes tight around the cable and allows for it to be moved around like a "joy-stick" in the opening without endangering the IP, so it works extremely well with cables passing through at an angle. Suitable for holes in materials of 0.5 to 4.5 mm thickness.
Material:	TPE (thermoplastic elastomer), halogen free.
Temperature resistance:	-50 °C to +125 °C.
Finish:	RAL 7035.
Protection:	IP 67.

H	H1	H2	Metric	Diameter	Cable diameter (mm)	Hole diameter (mm)	Pack quantity	Item no.
11.0	4.0	6.75	M16	23.5	5-10	16.5	50	CES16
11.0	4.0	6.75	M20	27.5	6-13	20.5	50	CES20
11.0	4.0	6.75	M25	39.5	8-17	25.5	50	CES25
11.0	4.0	6.75	M32	39.5	12-24	32.5	25	CES32



Double protection cables entry, CED

Description: The rubber grommet is very simple to use. The installation does not require tools, which in turn means lower work cost. The "pushout" membrane is a permanent seal until it is penetrated by a cable or pipe. Suitable for holes in materials of 0.5 to 4 mm thickness.

Material: EPDM, halogen free.

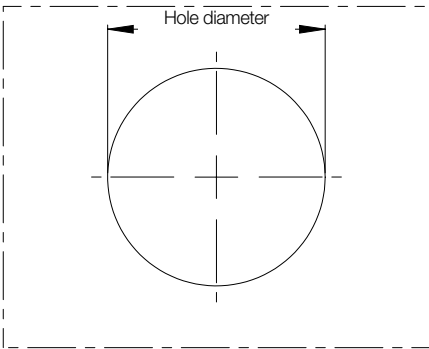
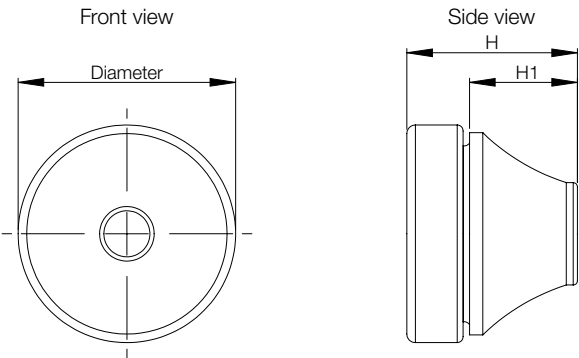
Temperature resistance: -40 °C to +110 °C.

Finish: RAL 7035.

Protection: IP 67.



H	H1	Metric	Diameter	Cable diameter (mm)	Hole diameter (mm)	Pack quantity	Item no.
12.8	5.6	M12	20.0	4-7	12.5	50	CED12
17.7	11.0	M16	21.0	5-9	16.5	50	CED16
20.0	13.4	M20	25.5	8-13	20.5	50	CED20
21.3	15.3	M25	30.5	11-17	25.5	50	CED25
24.6	18.6	M32	38.5	15-20	32.5	25	CED32
29.5	21.7	M40	48.5	19-28	40.5	25	CED40
34.8	25.0	M50	60.5	27-35	50.5	10	CED50



Cable anchorage glands, CAG

Description: Two-component grommet with membrane seal and cable anchorage. The installation does not require tools, it is self-adjusting to its surrounding wall thickness and click-fixed in place. Because of its compact design it only extends 5.7 mm outside the enclosure on which it is mounted. The "pushout" membrane is a permanent seal until it is penetrated by a cable or pipe. Suitable for holes in materials of 0.7 to 3 mm thickness.

Material: TPE and polyamide 66, halogen free.

Temperature resistance: -20 °C to +125 °C.

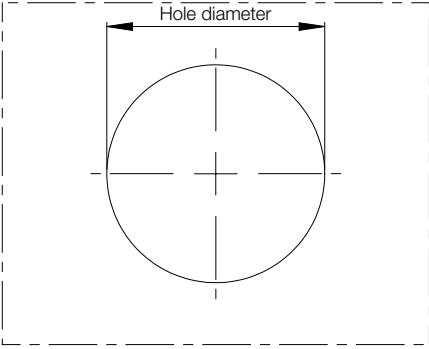
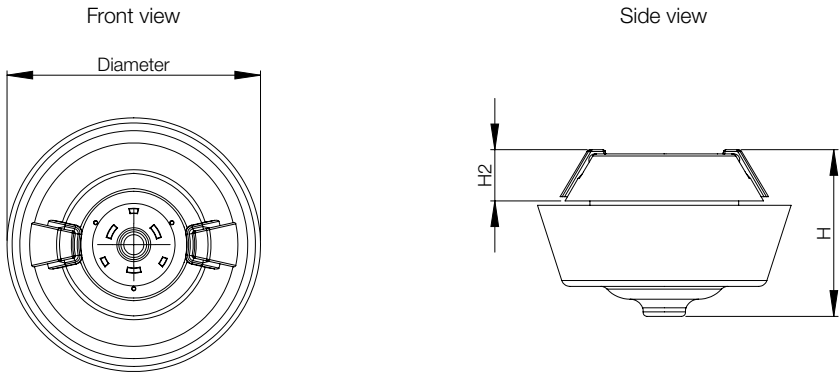
Finish: RAL 7035.

Protection: IP 67, 65, waterproof.

Pack quantity: 50 pieces.



H	H2	Metric	Diameter	Cable diameter (mm)	Hole diameter (mm)	Item no.
17-20	5.7	M20	34-37	7-11	20.5	CAG20
17-20	5.7	M25	39-42	7-13	25.5	CAG25



Cable entry gland plate, CEP

Description: Plastic cable entry for a fast, economical and tool-free incoming of cables and/or pneumatic conduits inside the enclosure. Integrated seal. For snap-in fastening (only for wall thicknesses ranging between 1.4 and 2 mm) and/or screwing. Installation height: 15.5 mm.

Material: Polyamide, and the seal is made of TPU/NBR/EPDM, halogen free.

Temperature resistance: -30°C to +70°C.

Flammability: V-0 according to UL94.

Finish: Black.

Protection: IP 65.

Pack quantity: 1 piece.

Openings (mm)						Item no.
3-6	4-8	5-9	8-12	9.5-16	14-20	
4	-	4	-	-	3	CEP2411
-	-	-	12	-	-	CEP2412
6	-	4	-	4	-	CEP2414
-	-	17	-	-	-	CEP2417
16	-	4	2	-	-	CEP2422
-	23	-	-	-	-	CEP2423
29	-	-	-	-	-	CEP2429



Round cable entry gland plate, CEPR

Description: Round plastic cable entry for a fast, economical and tool-free incoming of cables and/or pneumatic conduits inside the enclosure. Integrated seal. For snap-in mounting. Snap-in system works at wall thicknesses of 1.4 to 2 mm. Installation height: 9 mm outside, and 24-25 inside.

Material: Polyamide, and the seal is made of NBR/EPDM, halogen free.

Temperature resistance: -30°C to +90°C.

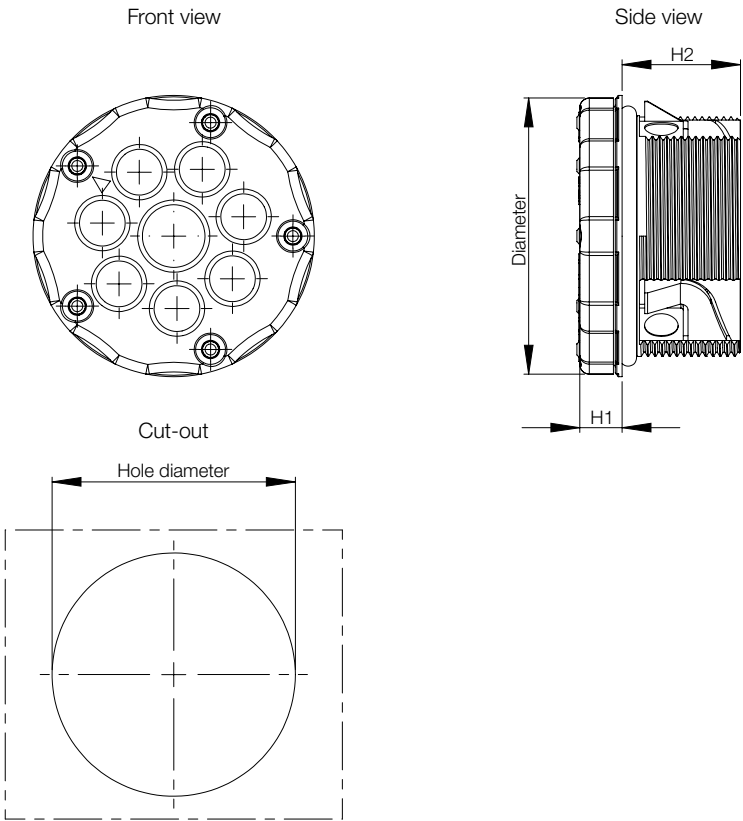
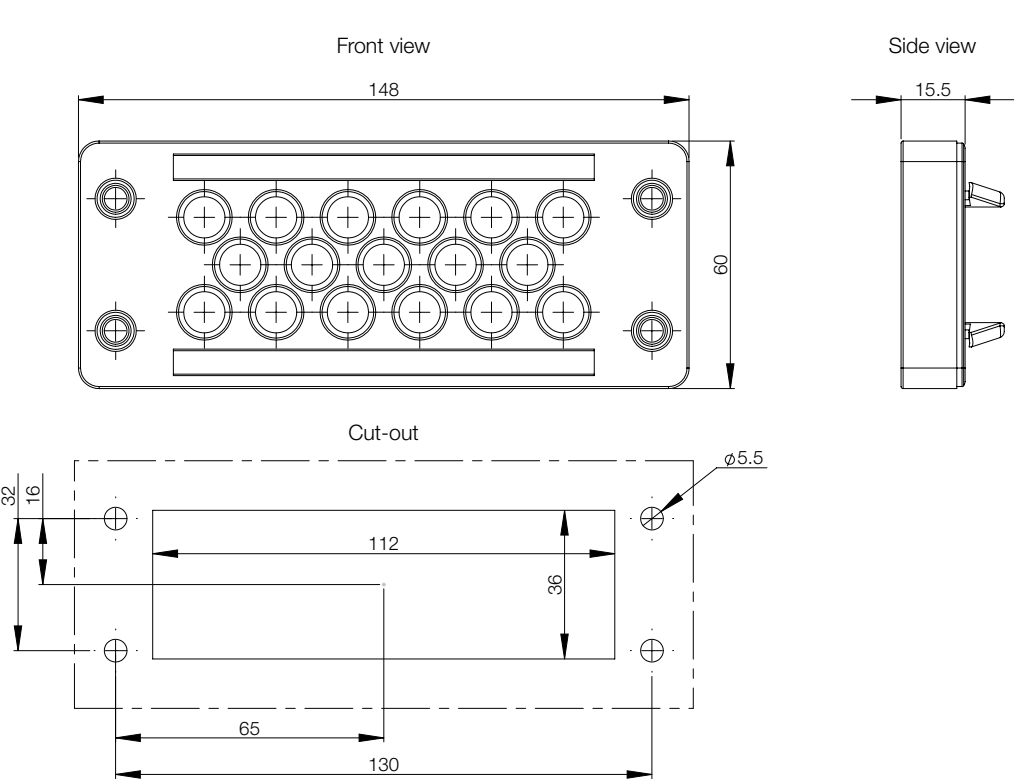
Flammability: V-0 according to UL94.

Finish: Black.

Protection: IP 65.

Pack quantity: 1 piece.

				Openings (mm)			Item no.
H1	H2	Diameter	Hole diameter (mm)	3-5	3 - 6,5	6-10	
9	24	58	50.5	-	7	1	CEPR5008
9	25	71	63.5	19	-	-	CEPR6319



Connected cable entry gland plate, CCF

- Description:

Plastic cable entry for a fast, economical and tool-free incoming of cables fitted with connectors, inside the enclosure. Integrated seal. For snap-in fastening (only for wall thicknesses ranging between 1.4 and 2 mm) and/or screwing. Installation height: 14 mm. It has ten openings to be covered with ten CCG cable entry grommets. If it's not necessary to use all the grommets with cables, a dummy grommet is to be used in order to maintain the IP rating.
- Material:

Polyamide, halogen free.
- Temperature resistance:

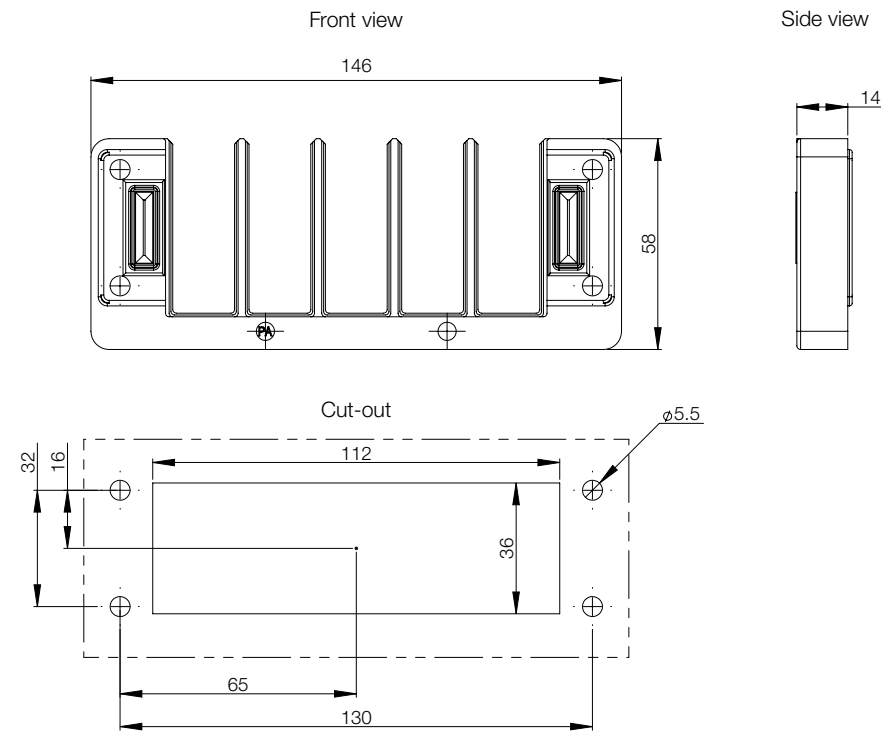
-40°C to +140°C.
- Flammability:

V-0 according to UL94.
- Finish:

Black.
- Protection:

IP 54 with suitable grommets and cables.
- Pack quantity:

1 piece.



Cable entry grommet, CCG

- Description:

Mounted together with the CCF cable gland plate, CCG grommets are used to easily route cables fitted with connectors. The grommet is positioned around the cable and is equipped with catch hooks that anchor themselves in the CCF cable gland plate. Strain relief is achieved by using a simple cable tie.
- Material:

Thermoplastic rubber, halogen free.
- Temperature resistance:

-40°C to +80°C.
- Flammability:

HB according to UL94.
- Finish:

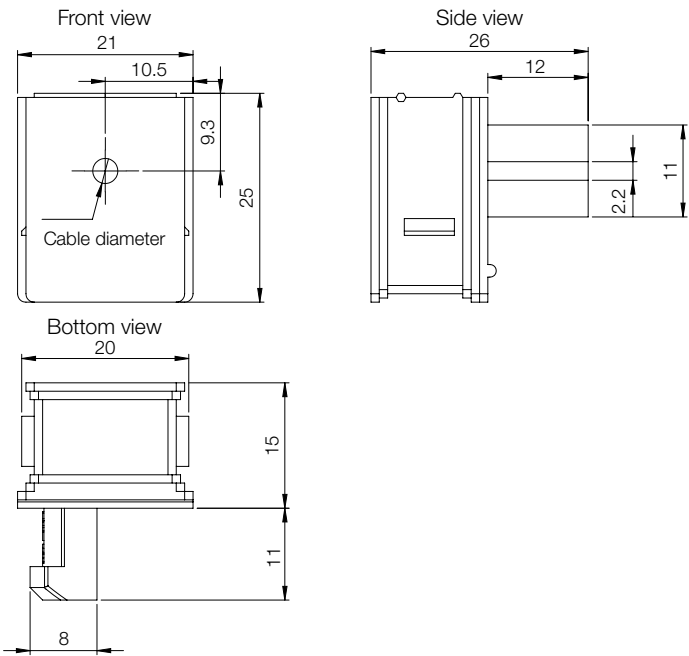
Black.
- Protection:

IP 54 with suitable gland plate and cables.
- Pack quantity:

10 pieces.



Cable diameter (mm)	Item no.
0	CCG00
3-4	CCG03
4-5	CCG04
5-6	CCG05
6-7	CCG06
7-8	CCG07
8-9	CCG08
9-10	CCG09
10-11	CCG10
11-12	CCG11
12-13	CCG12
13-14	CCG13
14-15	CCG14
15-16	CCG15



Cable Management
Cable Entry Gland Plates

Plastic cable plates, EHTC

- Description:

Gland plates suitable for leading through cables as well as different types of tubing. To be installed directly to the adapter gland plate AFA. Please see the cable management section.
- Material:

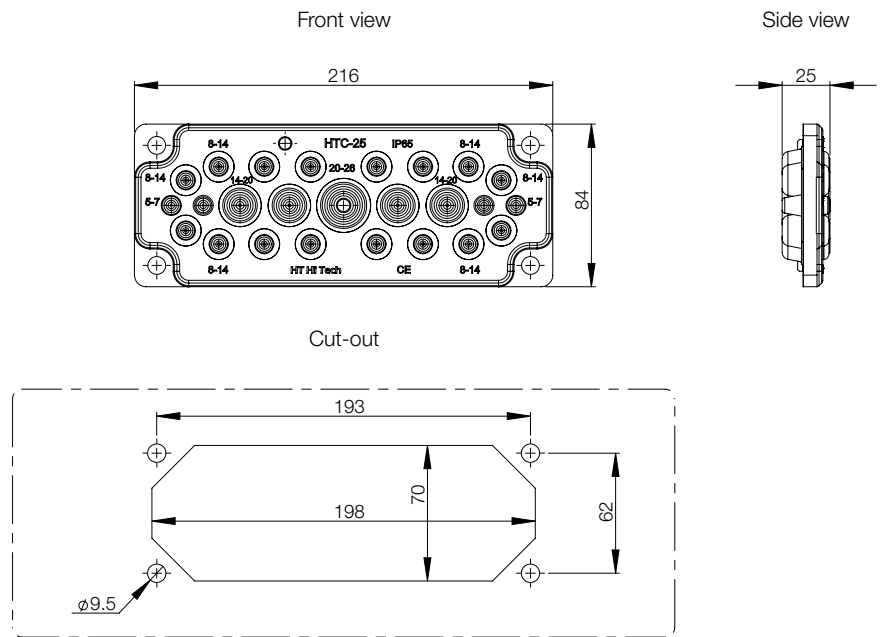
Different types of polymers reinforced with a steel plate. Halogen free and UV resistant.
- Protection:

IP 65.
- Finish:

RAL 7035.
- Pack quantity:

1 piece with mounting accessories.

For opening	Item no.
FL21	EHTC2125G
FL21	EHTC213G
FL21	EHTC2135G
FL21	EHTC2150G



Cable / Tube diameter (mm)	EHTC2125G	EHTC213G	EHTC2135G	EHTC2150G
5-7	4			
6-10			4	
6-14		3		
7-12			12	
7-13				49
8-14 / 7-10	16			
10-14			16	
12-18			2	
14-20 / 5-10	4			
15-25				1
17-32			1	
20-26 / 12-15	1	2		
24-54		1		
30-59				

