

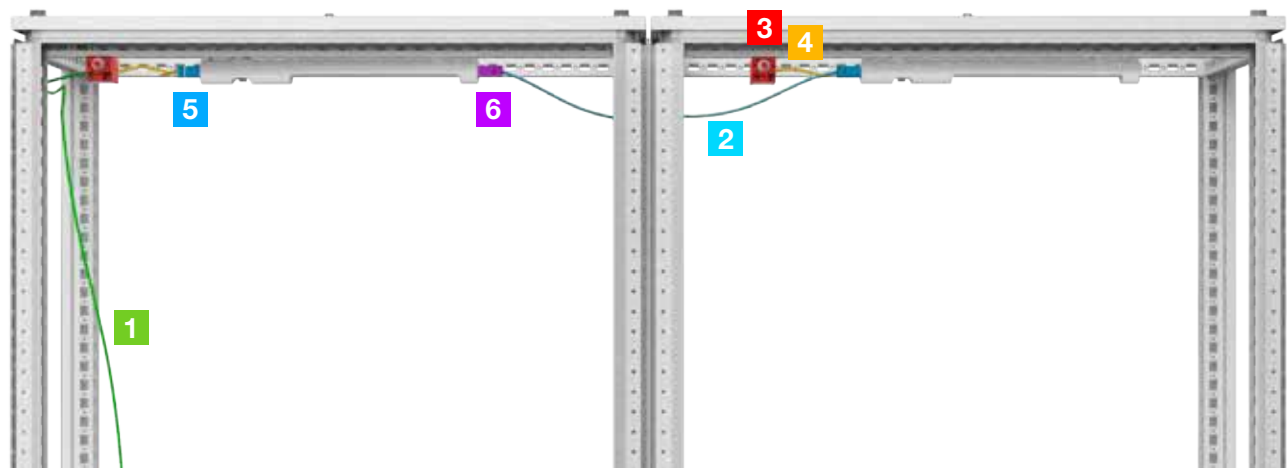


# 07 General Accessories

|                          |     |
|--------------------------|-----|
| Lighting & Sockets ..... | 590 |
| Profiles.....            | 605 |
| Paint .....              | 607 |
| Earthing.....            | 608 |
| Documents.....           | 612 |
| Busbar system.....       | 613 |



nVent HOFFMAN Lighting System



- 1. Connection cable for infeed (includes connector 5);
- 2. Connection cable for through-wiring /infeed (includes connectors 5 and 6);
- 3. Door-operated switch;
- 4. Connection cable for door-operated switch;
- 5. Connector for infeed;
- 6. Connector for through-wiring.

|   | EL         | LTSL     | TL       | TLCL | TLC  |
|---|------------|----------|----------|------|------|
| 1 | ELCxxxPx   | CLF L    | a)       | a)   | a)   |
| 2 | ELCxxxTx   | LPT L    | a)       | -    | -    |
| 3 | ELD0801x   | ADSW/DSW | ADSW/DSW | TLCS | TLCS |
| 4 | ELC3001Dx* | c)       | c)       | b)   | b)   |
| 5 | a)         | COF L    | a)       | a)   | a)   |
| 6 | a)         | COM L    | a)       | -    | -    |

- a) The light is delivered with this part;
- b) A connection cable is included in the delivery of the door-operated switch;
- c) The light does not include a dedicated socket for connection of a connection cable for a door operated switch: The assembler must connect the door switch in-between the main leads.

\* To be used with ADSW /DSW.



LED Enclosure light with socket and  
movement sensor, EL1200MS

| Description:                           | LED enclosure light specially designed for nVent HOFFMAN enclosures. Fast and tool-free assembly thanks to a latching hook system designed to fit the 25mm hole pattern on nVent HOFFMAN enclosures. May be fitted horizontally or vertically. |       |             |
|--|--|-------|-------------|
| Lamp type:                             | LED.   |       |             |
| Luminosity:                            | 1200 lm.   |       |             |
| Light colour:                          | 4000 K (neutral white).  |       |             |
| Power consumption:                     | 12 W   |       |             |
| Operating voltage:                     | 100 V - 240 V ~, 50/60 Hz  |       |             |
| Connection:                            | Infeed, 3-pole. Through wiring, 3-pole.  |       |             |
| Operating temperature:                 | -20 °C ... +55 °C  |       |             |
| Protection:                            | IP20   |       |             |
| Follow-up time of the motion detector: | 120 s  |       |             |
| Dimensions:                            | 364 × 76 × 48 mm.  |       |             |
| Operating voltage                      | Socket type  | Width | Item no.    |
| 100V-240V~, 50/60 Hz                   | Type F (Shucko)  | 364   | EL1200MS    |
| 100V-240V~, 50/60 Hz                   | Type E   | 364   | EL1200MS-BF |
| 100V-240V~, 50/60 Hz                   | Type J   | 364   | EL1200MS-CH |
| 100V-240V~, 50/60 Hz                   | Type G   | 364   | EL1200MS-GB |
| 100V-240V~, 50/60 Hz                   | Type B   | 364   | EL1200MS-US |



LED Enclosure light with socket, EL1200DS

| Description:              | LED enclosure light specially designed for nVent HOFFMAN enclosures. Fast and tool-free assembly thanks to a latching hook system designed to fit the 25mm hole pattern on nVent HOFFMAN enclosures. May be fitted horizontally or vertically. |       |             |
|---------------------------|--|-------|-------------|
| Lamp type:                | LED.   |       |             |
| Luminosity:               | 1200 lm.   |       |             |
| Light colour:             | 4000 K (neutral white).  |       |             |
| Power consumption:        | 12 W   |       |             |
| Operating voltage:        | 100 V - 240 V ~, 50/60 Hz  |       |             |
| Connection:               | Infeed, 3-pole. Through wiring, 3-pole.  |       |             |
| Operating temperature:    | -20 °C ... +55 °C  |       |             |
| Protection:               | IP20   |       |             |
| Dimensions:               | 364 × 76 × 48 mm.  |       |             |
| Operating voltage         | Socket type  | Width | Item no.    |
| 100 V - 240 V ~, 50/60 Hz | Type F (Shucko)  | 364   | EL1200DS    |
| 100 V - 240 V ~, 50/60 Hz | Type E   | 364   | EL1200DS-BF |
| 100 V - 240 V ~, 50/60 Hz | Type J   | 364   | EL1200DS-CH |
| 100 V - 240 V ~, 50/60 Hz | Type G   | 364   | EL1200DS-GB |
| 100 V - 240 V ~, 50/60 Hz | Type B   | 364   | EL1200DS-US |



LED Enclosure light with movement sensor, EL1200M

|  |  |          |  |
|--|--|----------|--|
| Description:                           | LED enclosure light specially designed for nVent HOFFMAN enclosures. Fast and tool-free assembly thanks to a latching hook system designed to fit the 25mm hole pattern on nVent HOFFMAN enclosures. May be fitted horizontally or vertically. |          |  |
| Lamp type:                             | LED.   |          |  |
| Luminosity:                            | 1200 lm.   |          |  |
| Light colour:                          | 4000 K (neutral white).  |          |  |
| Power consumption:                     | 12 W   |          |  |
| Operating voltage:                     | 100 V - 240 V ~, 50/60 Hz  |          |  |
| Connection:                            | Infeed, 3-pole. Through wiring, 3-pole.  |          |  |
| Operating temperature:                 | -20 °C ... +55 °C  |          |  |
| Protection:                            | IP20   |          |  |
| Follow-up time of the motion detector: | 120 s  |          |  |
| Dimensions:                            | 315 × 76 × 48 mm.  |          |  |
| Operating voltage                      | Width  | Item no. |  |
| 100 V - 240 V ~, 50/60 Hz              | 315  | EL1200M  |  |



LED Enclosure light with socket, EL900DS

|                           |  |       |            |
|---------------------------|--|-------|------------|
| Description:              | LED enclosure light specially designed for nVent HOFFMAN enclosures. Fast and tool-free assembly thanks to a latching hook system designed to fit the 25mm hole pattern on nVent HOFFMAN enclosures. May be fitted horizontally or vertically. |       |            |
| Lamp type:                | LED.   |       |            |
| Luminosity:               | 900 lm.  |       |            |
| Light colour:             | 4000 K (neutral white).  |       |            |
| Power consumption:        | 9 W  |       |            |
| Operating voltage:        | 100 V - 240 V ~, 50/60 Hz  |       |            |
| Connection:               | Infeed, 3-pole. Through wiring, 3-pole.  |       |            |
| Operating temperature:    | -20 °C ... +55 °C  |       |            |
| Protection:               | IP20   |       |            |
| Dimensions:               | 364 × 76 × 48  |       |            |
| Operating voltage         | Socket type  | Width | Item no.   |
| 100 V - 240 V ~, 50/60 Hz | Type F (Shucko)  | 364   | EL900DS    |
| 100 V - 240 V ~, 50/60 Hz | Type E   | 364   | EL900DS-BF |
| 100 V - 240 V ~, 50/60 Hz | Type J   | 364   | EL900DS-CH |
| 100 V - 240 V ~, 50/60 Hz | Type G   | 364   | EL900DS-GB |
| 100 V - 240 V ~, 50/60 Hz | Type B   | 364   | EL900DS-US |



LED Enclosure light, EL900D

|                           |  |          |  |
|---------------------------|--|----------|--|
| Description:              | LED enclosure light specially designed for nVent HOFFMAN enclosures. Fast and tool-free assembly thanks to a latching hook system designed to fit the 25mm hole pattern on nVent HOFFMAN enclosures. May be fitted horizontally or vertically. |          |  |
| Lamp type:                | LED.   |          |  |
| Luminosity:               | 900 lm.  |          |  |
| Light colour:             | 4000 K (neutral white).  |          |  |
| Power consumption:        | 9 W.   |          |  |
| Operating voltage:        | 100 V - 240 V ~, 50/60 Hz.   |          |  |
| Connection:               | Infeed, 3-pole. Through wiring, 3-pole.  |          |  |
| Operating temperature:    | -20 °C ... +55 °C.   |          |  |
| Protection:               | IP20   |          |  |
| Dimensions:               | 314 × 76 × 48 mm.  |          |  |
| Operating voltage         | Width  | Item no. |  |
| 100 V - 240 V ~, 50/60 Hz | 314  | EL900D   |  |



LED Enclosure light 24V with movement sensor, EL1200M24V

|  |  |            |  |
|--|--|------------|--|
| Description:                           | LED enclosure light specially designed for nVent HOFFMAN enclosures. Fast and tool-free assembly thanks to a latching hook system designed to fit the 25mm hole pattern on nVent HOFFMAN enclosures. May be fitted horizontally or vertically. |            |  |
| Lamp type:                             | LED.   |            |  |
| Luminosity:                            | 1200 lm.   |            |  |
| Light colour:                          | 4000 K (neutral white).  |            |  |
| Power consumption:                     | 12 W   |            |  |
| Operating voltage:                     | 24 V DC  |            |  |
| Connection:                            | Infeed, 2-pole. Through wiring, 2-pole.  |            |  |
| Operating temperature:                 | -20 °C ... +55 °C  |            |  |
| Protection:                            | IP20   |            |  |
| Follow-up time of the motion detector: | 120 s  |            |  |
| Dimensions:                            | 314 × 76 × 48  |            |  |
| Operating voltage                      | Width  | Item no.   |  |
| 24 V DC                                | 314  | EL1200M24V |  |



LED Enclosure light 24V, EL1200D24V

|                        |  |            |
|------------------------|--|------------|
| Description:           | LED enclosure light specially designed for nVent HOFFMAN enclosures. Fast and tool-free assembly thanks to a latching hook system designed to fit the 25mm hole pattern on nVent HOFFMAN enclosures. May be fitted horizontally or vertically. |            |
| Lamp type:             | LED.   |            |
| Luminosity:            | 1200 lm.   |            |
| Light colour:          | 4000 K (neutral white).  |            |
| Power consumption:     | 12 W   |            |
| Operating voltage:     | 24 V DC  |            |
| Connection:            | Infeed, 2-pole. Through wiring, 2-pole.  |            |
| Operating temperature: | -20 °C ... +55 °C  |            |
| Protection:            | IP20   |            |
| Dimensions:            | 314 × 76 × 48  |            |
| Operating voltage      | Width  | Item no.   |
| 24 V DC                | 314  | EL1200D24V |



Connection accessories for LED enclosure lights, ELC

|              |  |
|--------------|--|
| Description: | Pre-fabricated cables for LED enclosure lights. Using these cables will save time and ease mounting of the lights. |
| Connection:  | Infeed, with through wiring 3-pole cables (24V is with 2-pole cable).  |
| Dimensions:  | Different lengths: See article list for more info.   |



Cable for door switch, self assembly LED enclosure lights

| Type                                    | Ready to use cables                    | Length | Colour | Pack quantity | Item no.  |
|---|--|--------|--------|---------------|-----------|
| TPS-cable for door-switch, ENEC version | To be used together with a door switch | 3000   | Black  | 1             | ELC3001DE |
| TPS-cable for door-switch, UL version   | To be used together with a door switch | 3000   | Black  | 1             | ELC3001DU |

Connection cable for LED enclosure lights

| Type                         | Ready to use cables | Length | Colour | Pack quantity | Item no.     |
|------------------------------|---------------------|--------|--------|---------------|--------------|
| Infeed, 3-pole, 100-240 V AC | For infeed power    | 1000   | Black  | 5             | ELC1005PB    |
| Infeed, 3-pole, 100-240 V AC | For infeed power    | 3000   | Black  | 5             | ELC3005PB    |
| Infeed, 3-pole, 100-240 V AC | For infeed power    | 1000   | Orange | 5             | ELC1005PO    |
| Infeed, 3-pole, 100-240 V AC | For infeed power    | 3000   | Orange | 5             | ELC3005PO    |
| Infeed, 2-pole, 24 V (DC)    | For infeed power    | 3000   | Grey   | 5             | ELC3005PG24V |

Through wiring cable for LED enclosure lights

| Type                                | Ready to use cables | Length | Colour | Pack quantity | Item no.     |
|-------------------------------------|---------------------|--------|--------|---------------|--------------|
| Through-wiring, 3-pole 100-240 V AC | For through wiring  | 1000   | Black  | 5             | ELC1005TB    |
| Through-wiring, 3-pole 100-240 V AC | For through wiring  | 1000   | Orange | 5             | ELC1005TO    |
| Through-wiring, 2-pole, 24 V (DC)   | For through wiring  | 1000   | Grey   | 5             | ELC1005TG24V |

For UL-cables please contact nVent HOFFMAN.

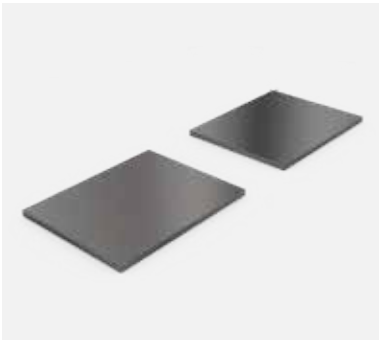
Door-operated switch for LED  
enclosure lights, ELD

| Description:   | This door switch is used with LED enclosure lights that don't have a motion detector. Delivered with a 800mm TPS cable. |               |          |
|----------------|---|---------------|----------|
| Dimensions:    | 31 × 31 × 63 × 800  |               |          |
| Pack quantity: | 1 piece including cable and door switch.  |               |          |
| Type           | Length  | Pack quantity | Item no. |
| CE             | 800   | 1             | ELD0801E |
| UL             | 800   | 1             | ELD0801U |



Mounting accessories for the LED  
enclosure light, ELA

| Description:   | Accessories for alternative mounting of an LED enclosure light. |          |  |
|----------------|---|----------|--|
| Design:        | Bracket for screw fixation, and magnets for magnet fixation.    |          |  |
| Pack quantity: | 2 pcs.  |          |  |
| Type           | Pack quantity   | Item no. |  |
| Magnet         | 2   | ELA02MF  |  |
| Screw          | 2   | ELA02SF  |  |



LED light, LTSL

|                        |  |
|------------------------|--|
| Description:           | Energy saving lighting system suitable for all types of panels and enclosures, especially where space is at a premium. It is made of transparent plastic. This lamp has a very long service life (around 60,000 h.) thanks to the use of LED technology. The power output allows up to 10 lights to be connected to each other (daisy chain) with both the input and output plugs snap-locking into their sockets. |
| Lamp:                  | LED, 120° angle of radiation.  |
| Luminosity:            | 400 Lm.  |
| Power consumption:     | 5 W max.   |
| Operating voltage:     | 100-240 V, 50/60 Hz.   |
| Operating temperature: | -30 °C to +60 °C.  |
| Connections:           | Connectors with snap lock for power supply and power output.   |
| Approvals:             | CE, EAC, cULus_UL Listed.  |

| Mounting      | Dimensions       | Item no. |
|---------------|------------------|----------|
| Magnet fixing | 351 x 34 x 32 mm | LTSL5    |
| Screw fixing  | 351 x 36 x 52 mm | LTSL5S   |



Power cable for LTSL lights, CLF L

| Description:   | Feed cable with female connector on one end to connect to a LTSL light and an open end for the connection to power. |
|----------------|---|
| Length:        | 2 m.  |
| Approvals:     | CE, EAC.  |
| Pack quantity: | 5 pieces.   |
| Item no.       |   |
| CLF2005L       |   |



Connecting cable for LTSL lights, LTP L

|                |  |
|----------------|--|
| Description:   | Plug-in connecting cable between LTSL light units. |
| Length:        | 1 m.   |
| Approvals:     | CE, EAC.   |
| Pack quantity: | 5 pieces.  |
| Item no.       |  |
| LTP1000L       |  |



Female connectors for LTSL lights, COF L

|                |  |
|----------------|--|
| Approvals:     | CE, EAC.                                     |
| Pack quantity: | Pack of 5 female connectors for LTSL lights. |
| Item no.       |  |
| COF05L         |  |



Male connectors for LTSL lights, COM L

|                |                            |
|----------------|----------------------------|
| Approvals:     | CE, EAC.                   |
| Pack quantity: | Pack of 5 male connectors. |
| Item no.       |                            |
| COM05L         |                            |



Compact design light, TLC

|                        |   |  |
|------------------------|---|--|
| Description:           | Lighting system with a compact design, suitable for all types of enclosures or racks. It has three possible fixing possibilities: magnetically, screw mounting with a variable distance between holes and/or snap-into 19" rack. It is an electronically operated device and has a service life of 10,000 h. The body of the lighting system is made of PC-ABS. An integrated connector allows the activation of the lamp by a door switch by using the TLC8 product without performing any additional wiring. It is provided with a protection cap made of PC and the colour of the light is cold white. |  |
| Lamp type:             | Fluorescent lamp T5/G5.   |  |
| Luminosity:            | 480 Lm.   |  |
| Power consumption:     | 8 W.  |  |
| Operating temperature: | -15 °C to +45 °C.   |  |
| Dimensions:            | 448 x 54.5 x 26 mm.   |  |
| Connections:           | 2x0.75 mm² open end cable (1.5 m long), 2x0.75 mm² female mini-connector for door switch use.   |  |
| Approvals:             | CE, EAC.  |  |
| Delivery:              | 1 light with fix mounted connection cable, integrated magnets and mounting screws.  |  |

| Operating voltage | Finish                | Item no. |
|-------------------|-----------------------|----------|
| 230 V, 50/60 Hz   | Light grey (RAL 7035) | TLC87035 |
| 230 V, 50/60 Hz   | Black (RAL 9005)      | TLC89005 |

24 V DC version available on request.





General Accessories

Lighting & Sockets

Compact design LED light, TLCL

|                        |  |
|------------------------|--|
| Description:           | Lighting system with a compact design, suitable for all types of enclosures or racks. It has three possible fixing possibilities: magnetically, screw mounting with a variable distance between holes and/or snap-into 19" rack. This lamp has a very long service life (around 50000 h.) due to the use of LED technology. The body of the lighting system is made of PC-ABS. An integrated connector allows the activation of the lamp by a door switch by using the TLCS product without performing any additional wiring. The led-tube is made of PC and the colour of the light is white. |
| Lamp type:             | High Power LEDs.   |
| Luminosity:            | 945 Lm.  |
| Power consumption:     | 7.2 W.   |
| Operating temperature: | -20 °C to +50 °C.  |
| Dimensions:            | 448 x 54.5 x 26 mm.  |
| Connections:           | 2x0.75 mm² open end cable (1.5 m long), 2x0.75 mm² mini-connector for door switch use.   |
| Approvals:             | CE, EAC.   |
| Delivery:              | 1 light with fix mounted connection cable, integrated magnets and mounting screws.   |

| Operating voltage      | Finish                | Item no.     |
|------------------------|-----------------------|--------------|
| 220-240 V AC, 50/60 Hz | Light grey (RAL 7035) | TLCL87035    |
| 24 V DC                | Light grey (RAL 7035) | TLCL87035-24 |
| 220-240 V AC, 50/60 Hz | Black (RAL 9005)      | TLCL89005    |
| 24 V DC                | Black (RAL 9005)      | TLCL89005-24 |

100-240 V version available on request.



19" Blind 1U, TLCF

|                |  |
|----------------|--|
| Description:   | Metal sheet to be used with TLC/TLCL lights to fill up one height unit in 19" racks. |
| Dimensions:    | 485 x 45 x 6 mm.   |
| Pack quantity: | 1 piece.   |

| Finish                | Item no. |
|-----------------------|----------|
| Light grey (RAL 7035) | TLCF7035 |
| Black (RAL 9005)      | TLCF9005 |



Small enclosure light, TL

|                        |   |
|------------------------|---|
| Description:           | Energy saving and cost-effective lightning system to be fixed with the screws or adhesive tape provided. The power output allows lights to be connected to each other by using the serial cable included. Up to a mamimun power of 100 W can be serial connected. |
| Lamp type:             | LED.  |
| Light colour:          | 4000 K (neutral white).   |
| Operating voltage:     | 220 V - 240 V ~, 50/60 Hz.  |
| Operating temperature: | -5 °C ... +45 °C.   |
| Connections:           | Infeed, 2-pole. Through wiring, 2-pole.   |
| Material:              | Body polycarbonate, end caps ABS, Protection cap PMMA.  |
| Approvals:             | CE, EAC.  |
| Delivery:              | 1 light with power cable 1.75 m long, one connection cable 140 mm long to connect lights to each other, plus mounting materials.  |

| Operating voltage    | Luminosity | Power consumption | Dimensions       | Item no.  |
|----------------------|------------|-------------------|------------------|-----------|
| 220V-240V~, 50/60 Hz | 330 Lm     | 4W                | 277 x 43 x 28 mm | TL4001-4W |
| 220V-240V~, 50/60 Hz | 750 Lm     | 9W                | 538 x 43 x 28 mm | TL4001-9W |



Door switch with cable for TLC / TLCL lights, TLCS

|                |  |
|----------------|--|
| Description:   | Door switch made of PC-ABS for the TLC and TLCL lights. Can be mounted on the inside hole pattern of the enclosure's frame in floor standing enclosures by means of a plug-in and play principle. A very slim design is guaranteed due to the integrated micro switch. This leaves a maximum opening space. The switch is supplied with a pre-wired cable. The auto positioning system of the door switch assures that the switch is always in the correct position. |
| Length:        | 1.5 m.   |
| Approvals:     | CE, EAC.   |
| Pack quantity: | 1 piece with mounting accessories.   |

| Description            | Item no. |
|------------------------|----------|
| Door switch with cable | TLCS01   |
| Cable for door switch  | TLCS600  |



Door switch, DSW

|                  |   |
|------------------|---|
| Description:     | Door switch to activate any electrical device (lighting, signalling, alarms, etc.). Can be mounted after installing the enclosure thereby keeping the door opening free. Fixed on the inside hole pattern of the enclosure's frame in floor standing enclosures. Cable entry M20. |
| Switch capacity: | 3 A / 240 V.  |
| Approvals:       | CE, cCSAus, CCC.  |
| Pack quantity:   | 1 piece with mounting accessories.  |

| Item no. |
|----------|
| DSW01    |



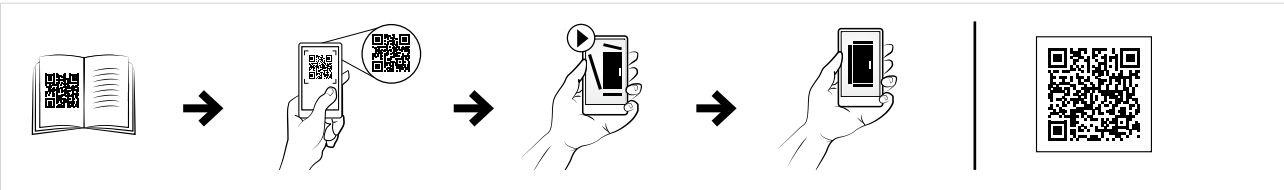


General Accessories

Lighting & Sockets

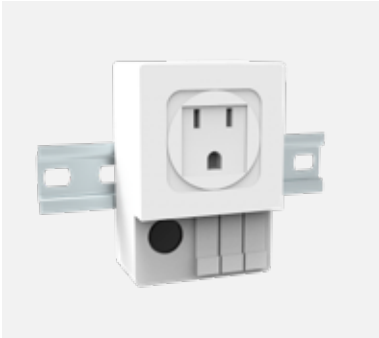
Door switch, ADSW

|                  |   |
|------------------|---|
| Description:     | Door switch to activate any electrical device (lighting, signalling, alarms, etc.) designed for wall mounted enclosures. Cable entry M20. In stainless steel enclosures, machining is required. |
| Switch capacity: | 3 A / 240 V.  |
| Approvals:       | CE, EAC, cULus listed.  |
| Pack quantity:   | 1 piece with mounting accessories.  |
| Item no.         |   |
| ADSW01           |   |



Power socket with integrated fuse, LPS

|                |  |
|----------------|--|
| Description:   | DIN rail mounted electrical socket. Pressure clamp connection for easy and quick wiring. |
| Dimensions:    | 92 mm x 62 mm x 48 mm.   |
| Connection:    | 3 pressure clamps for stranded and rigid wire 0.5-2.5 mm². Integrated fuse 6,3A 5x20 mm. |
| Finish:        | Light grey.  |
| Material:      | Plastic UL 94 V-0.   |
| Pack quantity: | 1 piece.   |



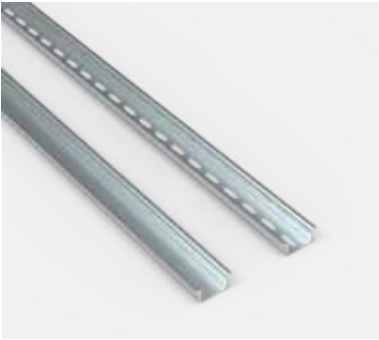
| Socket type              | Item no. |
|--------------------------|----------|
| Schuko                   | LPS10    |
| France / Belgium / Czech | LPS10FR  |
| Switzerland              | LPS10CH  |
| UK / Ireland             | LPS10UK  |
| USA / Canada             | LPS10USA |

General Accessories

Profiles

DIN rails, PP

| Description:   | According to EN 60715. |                           |          |          |
|----------------|------------------------|---------------------------|----------|----------|
| Material:      | Galvanized steel.      |                           |          |          |
| Pack quantity: | 15 × 2 m.              |                           |          |          |
| Description    | Type                   | Hole pattern              | Dim      | Item no. |
| With holes     | Omega                  | Hole pattern 18 x 5.2 mm. | 5 x 15   | PP0515H  |
| Without holes  | Omega                  |                           | 7.5 x 35 | PP0735   |
| With holes     | Omega                  | Hole pattern 18 x 5.2 mm. | 7.5 x 35 | PP0735H  |
| Without holes  | G                      |                           | 15 x 32  | PP1532   |
| With holes     | G                      | Hole pattern 18 x 5.2 mm. | 15 x 32  | PP1532H  |
| Without holes  | Omega                  |                           | 15 x 35  | PP1535   |
| With holes     | Omega                  | Hole pattern 18 x 5.2 mm. | 15 x 35  | PP1535H  |



Support bracket, DRS

| Description:   | Mounting brackets to install earthing strips and rails. |  |
|----------------|---|--|
| Material:      | Zinc plated steel.                                      |  |
| Pack quantity: | 20 pieces.  |  |
| Type           | Item no.  |  |
| Flat           | DRS20F  |  |
| Inclined       | DRS20I  |  |



Mounting rails, CP

| Description:   | Installation profile with and without 25 mm hole pattern. Add GLM sliding nuts for easy installation of components. |          |
|----------------|---|----------|
| Material:      | Galvanized steel.   |          |
| Pack quantity: | 10 x 2 m.   |          |
| Description    | Dim   | Item no. |
| With holes     | 10 x 20   | CP1020H  |
| Without holes  | 10 x 20   | CP1020U  |
| With holes     | 20 x 20   | CP2020H  |
| Without holes  | 20 x 20   | CP2020U  |
| With holes     | 20 x 40   | CP2040H  |
| Without holes  | 20 x 40   | CP2040U  |



General Accessories  
Profiles

Sliding nuts for mounting rails, GLM-GA

| Description:   | Sliding nuts to be used with CP mounting rails and CLPF mounting profiles for easy installation of components. |          |
|----------------|--|----------|
| Material:      | Zinc plated steel.   |          |
| Pack quantity: | 50 pieces.   |          |
| Thread         | To be used with  | Item no. |
| M6             | CP1020, CP1020U, CP2020, CP2020U   | GLM20-6P |
| M8             | CP1020, CP1020U, CP2020, CP2020U   | GLM20-8P |
| M6             | CP2040, CP2040U, CLPF profiles   | GLM40-6P |
| M8             | CP2040, CP2040U, CLPF profiles   | GLM40-8P |



Extrude-tite screws, CNT

| Description:   | Torx extrude-tite screws for fitting accessories, click in profiles, earthing etc. |  |
|----------------|--|--|
| Pack quantity: | 250 pieces.  |  |
| Thread         | Item no.   |  |
| M5             | CNT05  |  |
| M6             | CNT06  |  |



Screws for clip-on cage nuts, CNS

| Description:   | Socket head screws M6x12 and M8x12 for clip-on cage nuts. |  |
|----------------|---|--|
| Pack quantity: | 250 pieces.   |  |
| Thread         | Item no.  |  |
| M6             | CNS612  |  |
| M8             | CNS812  |  |



Cage nuts, CNM

| Description:   | Cage nuts designed for universal use on the enclosure frame profiles and the profiles system. |  |
|----------------|---|--|
| Pack quantity: | 50 pieces.  |  |
| Thread         | Item no.  |  |
| M6             | CNM615  |  |
| M8             | CNM815  |  |



General Accessories  
Paint

Paint can, BFP

| Description:   | Air drying paint, for repairs and touch-up of powder coated or wet painted surfaces. |          |  |
|----------------|--|----------|--|
| Pack quantity: | 1 spray can of 400 ml.   |          |  |
| Colour         | RAL Colour   | Item no. |  |
| Black          | RAL 7022   | BFP7022  |  |
| Mid grey       | RAL 7030   | BFP7030  |  |
| Pebble grey    | RAL 7032   | BFP7032  |  |
| Light grey     | RAL 7035   | BFP7035  |  |



Cleaner for stainless steel, SSC

|                       |   |
|-----------------------|---|
| <b>Description:</b>   | A special in-depth cleaner for stainless steel.   |
| <b>Pack quantity:</b> | 1 bottle of stainless steel cleaner of 250 ml, 1 bottle of surface protector, 1 sponge. |
|                       |   |
| <b>Item no.</b>       |   |
| SSC01                 |   |

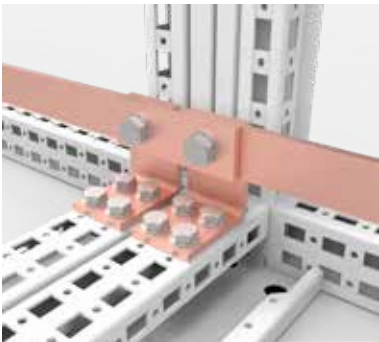


General Accessories

Earthing

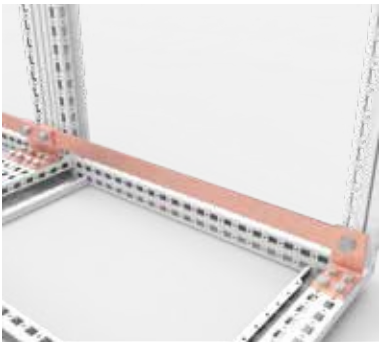
PE/PEN baying bracket, EBB

|              |   |
|--------------|---|
| Description: | Baying bracket to be used when ECB copper bars need to be connected between enclosures. |
| Material:    | Copper.   |
| Delivery:    | 5 pcs. of copper brackets.  |
|              |   |
| Dimensions   | Item no.  |
| 30x05        | EBB3005   |
| 30x10        | EBB3010   |
| 40x10        | EBB4010   |
| 80x10        | EBB8010   |



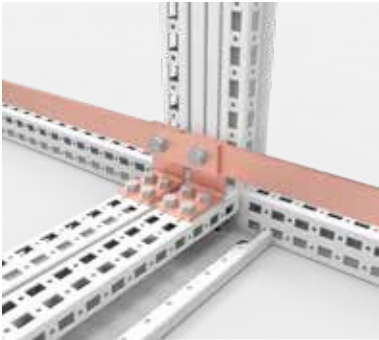
PE/PEN bars, ECB

|              |  |           |
|--------------|--|-----------|
| Description: | Prefabricated busbars designed for nVent HOFFMAN enclosures. |           |
| Material:    | Copper.  |           |
| Delivery:    | 2 pcs. of copper bar.  |           |
| Dimensions   | Length   | Item no.  |
| 30x5         | 400  | ECB043005 |
| 30x10        | 400  | ECB043010 |
| 40x10        | 400  | ECB044010 |
| 80x10        | 400  | ECB048010 |
| 30x05        | 600  | ECB063005 |
| 30x10        | 600  | ECB063010 |
| 40x10        | 600  | ECB064010 |
| 80x10        | 600  | ECB068010 |
| 30x05        | 800  | ECB083005 |
| 30x10        | 800  | ECB083010 |
| 40x10        | 800  | ECB084010 |
| 80x10        | 800  | ECB088010 |



PE/PEN bracket, ECK

|              |   |
|--------------|---|
| Description: | Copper bracket to support the fixation of ECB-bars. The bracket is fixated directly to the frame. |
| Material:    | Copper.   |
| Delivery:    | 2 pcs. of brackets with fixation material.  |
|              |   |
| Dimensions   | Item no.  |
| 30x5         | ECK01   |
| 40x10        | ECK02   |
| 40x10 Flat   | ECK03   |



General Accessories

Earthing

Earthing cables, ECFA

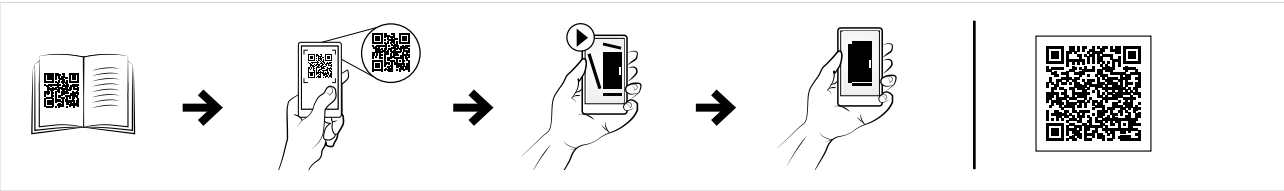
**Description:** For earthing between metallic parts.

**Material:** 6 mm² copper wire (yellow-green).

**Pack quantity:** 10 pieces.

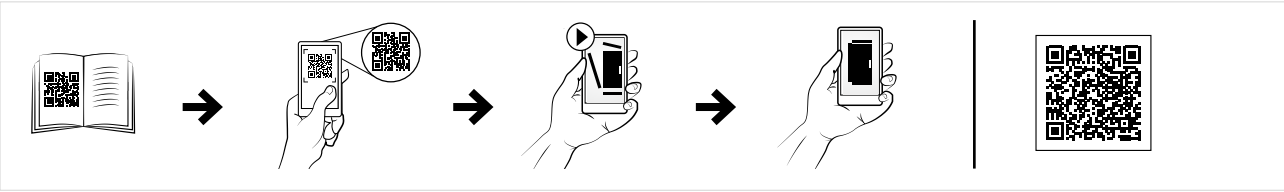
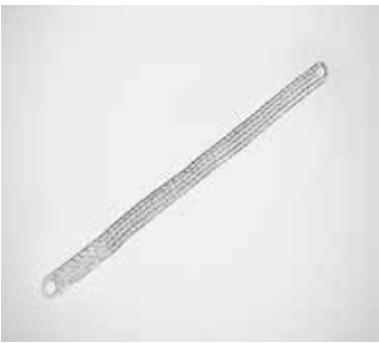
**Mounting requirements:** Add connection set ECF for fixing cable to painted frame.

| Length | Connection size | Item no. |
|--------|-----------------|----------|
| 220 mm | M6 / M8         | ECFA220  |
| 300 mm | M8 / M8         | ECFA300  |



Earthing straps, ECFE

|                        |  |             |          |
|------------------------|--|-------------|----------|
| Description:           | For earthing and potential compensation between panels, parts and the enclosure's frame. |             |          |
| Length:                | 300 mm.  |             |          |
| Material:              | Tinned electrolytic copper 0.15 mm wire.   |             |          |
| Working temperature:   | Up to 105°C.   |             |          |
| Pack quantity:         | 10 pieces.   |             |          |
| Mounting requirements: | Add ECF connection set for fixing strap to painted frame.                                |             |          |
|                        |  |             |          |
| Cross sectional area   | Holes diam.  | Current (A) | Item no. |
| 16 mm²                 | 8.5  | 120 A       | ECFE1630 |
| 25 mm²                 | 10.5   | 150 A       | ECFE2530 |



General Accessories

Earthing

Earthing connection for panels, ECP

|                |   |  |
|----------------|---|--|
| Description:   | Earthing connection for fixing the earthing straps and cables to panels, mounting plates or profiles. |  |
| Pack quantity: | 10 sets.  |  |
| Bolt size      | Item no.  |  |
| M6             | ECP06   |  |
| M8             | ECP08   |  |



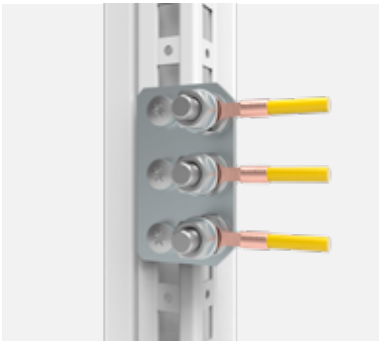
Earthing connections for frames, ECF

|                |  |  |
|----------------|--|--|
| Description:   | Earthing connections for fixing the earthing straps and cables to the enclosure's frame. |  |
| Pack quantity: | 10 sets.   |  |
| Bolt size      | Item no.   |  |
| M6             | ECF06  |  |
| M8             | ECF08  |  |



Central earthing point, ECFP

|                       |  |
|-----------------------|--|
| <b>Description:</b>   | Provides earthing contact surface on horizontal or vertical frame profiles. For a secure earthing point with multiple connections. |
| <b>Material:</b>      | Galvanized steel.  |
| <b>Pack quantity:</b> | 3 central earthing points with mounting accessories. M8 earthing kit included for the three holes.                                 |
| <hr/>                 |  |
| <b>Item no.</b>       |  |
| ECFP08                |  |



General Accessories

Earthing

PE busbar with terminal clamps, NSM2000

|                                 |   |          |
|---------------------------------|---|----------|
| Description:                    | PE-bar in 2000mm length with 133 prefitted terminals. Can be cut to the desired lenght for the enclosure. |          |
| Dimensions:                     | 2000 × 12 × 3 mm  |          |
| Material:                       | CU.   |          |
| Includes:                       | PE busbar, 133 screws/terminals (pre-fitted).   |          |
| Pack quantity:                  | 1 pcs.  |          |
| Description                     | Length  | Item no. |
| PE busbar 12 × 3 with terminals | 2000 mm   | NSM2000  |



PE busbar, NS750

|                                      |   |          |
|--------------------------------------|---|----------|
| Description:                         | PE-bar in 750 mm length with 50 threaded holes. Terminals, type OKD1, can be used together with the busbar. |          |
| Dimensions:                          | 750 × 12 × 3  |          |
| Material:                            | CU.   |          |
| Includes:                            | PE Busbar.  |          |
| Pack quantity:                       | 1 pcs.  |          |
| Description                          | Length  | Item no. |
| PE busbar 12 × 3 with threaded holes | 750   | NS750    |



Isolator for PE/Neutral busbar, TNS2

|                                |  |  |
|--------------------------------|--|--|
| Description:                   | Isolator for 12 × 3 busbar, to create a neutral or isolated PE busbar. |  |
| Pack quantity:                 | 2 pcs of isolators, screws and 1 pc of terminal for 35mm².             |  |
| Description                    | Item no.   |  |
| Isolator for PE/neutral busbar | TNS2   |  |



Connection terminal, OKD1

|                               |   |          |
|-------------------------------|---|----------|
| Description:                  | Connection terminal to be used on the copper bar NS750. |          |
| Connection size:              | 1.5 - 16 mm².   |          |
| Includes:                     | Connection terminal with including screws.              |          |
| Pack quantity:                | 25 pcs.   |          |
| Description                   | Pack quantity   | Item no. |
| Connection terminal for NS750 | 25  | OKD1     |





General Accessories  
Documents

Document pocket, DRA

**Description:** Self adhesive, for DIN A4.  
**Usable depth:** 30 mm.  
**Material:** Thermoplastic.  
**Finish:** RAL 7035.  
**Pack quantity:** 1 document pocket with double sided tape.

| Item no. |
|----------|
| DRA04    |



Document pockets, DRB

**Description:** A large steel document pocket fixed directly onto the door frame.  
Usable depth: 68 mm.  
**Finish:** RAL 7035 structured powder coating.  
**Pack quantity:** 1 piece with mounting accessories.

| Description                          | Material          | Item no.  |
|--------------------------------------|-------------------|-----------|
| Universal document pocket 300mm wide | 1.5 mm mild steel | DRB0303R5 |
| For 600 mm doors                     | 1.5 mm mild steel | DRB600R5  |
| For 800 mm doors                     | 1.5 mm mild steel | DRB800R5  |



Document pockets, DRBS

**Description:** A large steel document pocket fixed directly onto the door frame.  
Usable depth: 68 mm.  
**Finish:** 400 pre-grained stainless steel.  
**Pack quantity:** 1 piece with mounting accessories.

| Description                           | Material             | Item no.       |
|---------------------------------------|----------------------|----------------|
| Universal document pocket 300 mm wide | Stainless steel 316L | DRBS03030-316L |
| For 800 mm doors                      | Stainless steel 316L | DRBS0800-316L  |
| For 1000 mm doors                     | Stainless steel 316L | DRBS1000-316L  |



General Accessories  
Busbar 60 mm system

Universal busbar support

**Description:** Universal busbar support 3/4-Pole with internal screw holes, delivered without end cover.  
**Rated voltage:** 690 V  
**Rated frequency:** 50/60 Hz  
**Rated isolation voltage Ui:** 1000 V  
**Rated surge voltage Uimp:** 8 kV  
**Approvals:** GL, DNV GL

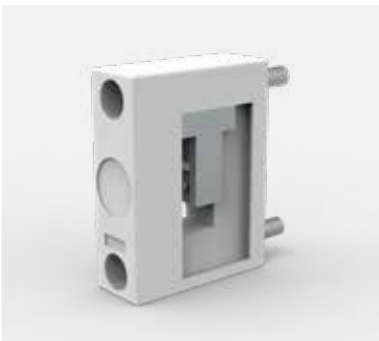
| N° of Poles | Dimensions    | For busbar                 | Pack quantity | Item no. |
|-------------|---------------|----------------------------|---------------|----------|
| 4           | 20 × 242 × 51 | 12, 15, 20, 25, 30 × 5, 11 | 10 pcs.       | 01485    |
| 3           | 20 × 191 × 50 | 12, 15, 20, 25, 30 × 5, 10 | 10 pcs.       | 01495    |



PE/N busbar support

**Description:** PE/N-support. Individually mountable. N-PE connection easy to make.  
**Rated voltage:** 690 V  
**Rated isolation voltage Ui:** 1000 V  
**Rated surge voltage Uimp:** 6 kV  
**Short circuit withstand:** 14 kA (max 400 mm distance between supports)

| N° of Poles | Dimensions    | For busbar                 | Pack quantity | Item no. |
|-------------|---------------|----------------------------|---------------|----------|
| 2           | 20 × 164 × 50 | 12, 15, 20, 25, 30 × 5, 11 | 10 pcs.       | 01356    |
| 1           | 20 × 65 × 50  | 12, 20, 30 × 5, 10         | 1 pcs.        | 01601    |



# General Accessories

## Busbar 60 mm system

### Connection busbar support

|   |  |          |
|---|--|----------|
| Description:                            | Connection busbar support with integrated terminals (1,5 - 16 mm²) for feeding or tapping the busbar with internal scow holes. May also be used as centre support. |          |
| Rated voltage:                          | 690 V  |          |
| Rated current:                          | 63 A   |          |
| Rated frequency:                        | 50/60 Hz   |          |
| Rated isolation voltage Ui:             | 1000 V   |          |
| Rated surge voltage Uimp:               | 6 kV   |          |
| Short circuit withstand:                | 14 kA (max 400 mm distance between supports)   |          |
| Power dissipation 80% of rated current: | 0.5 W  |          |
| Dimensions:                             | 20 × 202 × 87 mm   |          |
| Pack quantity:                          | 10 pcs.  |          |
| N° of Poles                             | For busbar   | Item no. |
| 3                                       | 12, 20, 30 × 5, 10   | 01484    |



### End cover

|                                   |  |  |          |
|-----------------------------------|--|--|----------|
| Description:                      |  | End cover for universal busbar supports, to cover the busbar ends. |          |
| For busbar support                |  | Pack quantity  | Item no. |
| 01357, 01485                      |  | 5 pcs.   | 01131    |
| 01356, 01601                      |  | 10 pcs.  | 01325    |
| 01484, 01495, 01500, 01508, 01603 |  | 10 pcs.  | 01573    |



# General Accessories

## Busbar 60 mm system

### Copper busbars

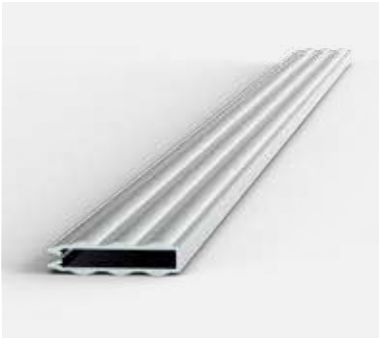
|                       |   |
|-----------------------|---|
| <b>Description:</b>   | Tin-plated Cu busbars. The Cu busbar is effectively protected against aggressive media. |
| <b>Material:</b>      | Cu-ETP R300 (EN13601), tinned   |
| <b>Length:</b>        | 2400 mm   |
| <b>Pack quantity:</b> | 1 pc.   |
| <b>Approvals:</b>     | CSA, UL, GL   |

| Model   | Cross-section       | Current at 30 K | Item no. |
|---------|---------------------|-----------------|----------|
| 12 × 5  | 60 mm <sup>2</sup>  | 200 A           | 01618    |
| 15 × 5  | 75 mm <sup>2</sup>  | 250 A           | 01619    |
| 20 × 5  | 100 mm <sup>2</sup> | 320 A           | 01620    |
| 25 × 5  | 125 mm <sup>2</sup> | 400 A           | 01621    |
| 30 × 5  | 150 mm <sup>2</sup> | 450 A           | 01622    |
| 12 × 10 | 120 mm <sup>2</sup> | 360 A           | 01623    |
| 20 × 10 | 200 mm <sup>2</sup> | 520 A           | 01624    |
| 30 × 10 | 300 mm <sup>2</sup> | 630 A           | 01625    |



### Busbar cover

|                       |   |                 |  |
|-----------------------|---|-----------------|--|
| <b>Description:</b>   | Touch protection cover to be used where no component is mounted on the copper busbar. To prevent people from touching the busbar. |                 |  |
| <b>Length:</b>        | 1000 mm   |                 |  |
| <b>Pack quantity:</b> | 10 pcs.   |                 |  |
| <b>Approvals:</b>     | CSA, UL, GL   |                 |  |
| <b>For busbar</b>     |   | <b>Item no.</b> |  |
| 12 - 30 × 5           |   | 01244           |  |
| 12 - 30 × 10          |   | 01245           |  |



### Cover section

|                |   |
|----------------|---|
| Description:   | To cover the 3-pole busbar system in the front. |
| Length:        | 1000 mm   |
| Dimensions:    | 700 x 200 x 63                                  |
| Pack quantity: | 2 pcs.  |
| Approvals:     | CSA, UL, GL                                     |
|                |   |
| Item no.       |   |
| 01025          |   |



General Accessories

Busbar 60 mm system

Mounting device

|                |   |
|----------------|---|
| Description:   | For mounting cover sections, for 3-pole busbar system, to be used with cover section 01025. |
| For busbars:   | 12, 15, 20, 25, 30 × 5, 10  |
| Dimensions:    | 9 × 196 × 32 mm   |
| Pack quantity: | 10 pcs.   |
| Approvals:     | CSA, UL, GL   |
|                |   |
| Item no.       |   |
| 01026          |   |



Connection terminal plate

| <b>Description:</b>                                     | Connection terminal plate, 3-pole, with cover cap. |   |          |
|---|--|---|----------|
| <b>For busbars:</b>                                     | 12, 15, 20, 25, 30 × 5, 10.                        |   |          |
| <b>Rated voltage:</b>                                   | 690 V  |   |          |
| <b>Rated peak withstand current I<sub>pk</sub> max:</b> | 40.5 kA (01240), 56.3 kA (01243)                   |   |          |
| <b>Pack quantity:</b>                                   | 1 pc.  |   |          |
| <b>Approvals:</b>                                       | CSA, UL, GL  |   |          |
|   |  |   |          |
| Width   | For use up to max.                                 | Connection                                  | Item no. |
| 54  | 300 A  | 6 - 50 mm², lam. Cu. 7 × 4 ... 9 × 10       | 01240    |
| 81  | 440 A  | 35 - 120 mm², lam. Cu. 12 × 4 ... 15.5 × 10 | 01243    |



Connection terminal plate for higher currents

|                           |  |                 |
|---------------------------|--|-----------------|
| <b>Description:</b>       | Connection terminal plate, 3-pole, with cover cap. |                 |
| <b>For busbars:</b>       | 20, 25, 30 × 5, 10                                 |                 |
| <b>Rated voltage:</b>     | 690 V.   |                 |
| <b>Width:</b>             | 135  |                 |
| <b>Pack quantity:</b>     | 1 pc.  |                 |
| <b>Approvals:</b>         | GL   |                 |
| <b>For use up to max.</b> | <b>Connection</b>                                  | <b>Item no.</b> |
| 460 A                     | 95 - 185 mm²                                       | 01199           |
| 800 A                     | lam.Cu. 20 × 3 ... 32 × 15                         | 01753           |
| 560 A                     | 95 - 300 mm²                                       | 01754           |



General Accessories

Busbar 60 mm system

Connection set

**Description:** Connection set, 3-pole without cover cap.

**Rated voltage:** 690 V

**Width:** 153

**Pack quantity:** 1 pc.

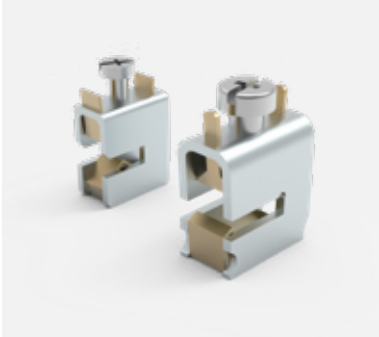
**Approvals:** CSA, UL, GL

| For use up to max. | Connection                 | Item no. |
|--------------------|----------------------------|----------|
| 560 A              | 95 - 300 mm²               | 01537    |
| 800 A              | lam.Cu. 20 x 3 ... 32 x 15 | 01538    |



Universal connection terminal

|                           |   |                           |                    |                      |                 |
|---------------------------|---|---------------------------|--------------------|----------------------|-----------------|
| <b>Description:</b>       | Universal conductor terminal with integrated holding spring, a captive clamping screw, and open terminal space. |                           |                    |                      |                 |
| <b>Rated voltage:</b>     | 690 V   |                           |                    |                      |                 |
| <b>Approvals:</b>         | CSA, UL, GL, DNV-GL   |                           |                    |                      |                 |
| <b>For use up to max.</b> | <b>Terminal space W × H (mm)</b>  | <b>Connection min-max</b> | <b>For busbar</b>  | <b>Pack quantity</b> | <b>Item no.</b> |
| 440 A                     | 17 × 15   | 16 - 120 mm <sup>2</sup>  | flat busbars 5 mm  | 25 pcs.              | 01068           |
| 440 A                     | 17 × 15   | 16 - 120 mm <sup>2</sup>  | flat busbars 10 mm | 25 pcs.              | 01203           |
| 180 A                     | 7.5 × 7.5   | 1.5 - 16 mm <sup>2</sup>  | flat busbars 5 mm  | 100 pcs.             | 01284           |
| 270 A                     | 10.5 × 11   | 4 - 35 mm <sup>2</sup>    | flat busbars 5 mm  | 50 pcs.              | 01285           |
| 400 A                     | 14 × 14   | 16 - 70 mm <sup>2</sup>   | flat busbars 5 mm  | 25 pcs.              | 01287           |
| 180 A                     | 7.5 × 7.5   | 1.5 - 16 mm <sup>2</sup>  | flat busbars 10 mm | 100 pcs.             | 01289           |
| 270 A                     | 10.5 × 11   | 4 - 35 mm <sup>2</sup>    | flat busbars 10 mm | 50 pcs.              | 01290           |
| 400 A                     | 14 × 14   | 16 - 70 mm <sup>2</sup>   | flat busbars 10 mm | 25 pcs.              | 01292           |



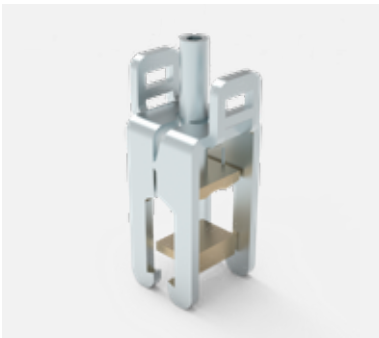
Brace terminals

**Description:** Brace terminal, up to 300mm², for round conductors. Terminal with captive clamping screws, conductor can be overlapped. Indication of nominal cross-section and tightening torque noted on the terminal.

**Rated voltage:** 690 V

**Approvals:** UL

| For use up to max. | Connection min-max                        | For busbar         | Pack quantity | Item no. |
|--------------------|---|--------------------|---------------|----------|
| 480 A              | 35 - 150 mm², lam. Cu. 15 × 5 ... 20 × 10 | 12, 15, 20 × 5, 10 | 6 pcs.        | 01135    |
| 500 A              | Cu / Al 95 - 185 mm²                      | 20, 25, 30 × 5, 10 | 6 pcs.        | 01318    |
| 600 A              | Cu / Al 95 - 300 mm²                      | 20, 25, 30 × 5, 10 | 3 pcs.        | 01760    |

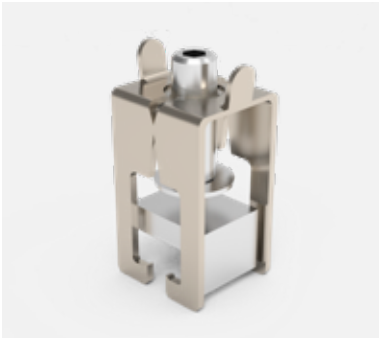


# General Accessories

## Busbar 60 mm system

### Brace terminals, flat

| Description:                          | Terminal for flat conductors with captive clamping screws, conductor can be overlapped, indication of nominal cross-section and tightening torque noted on the terminal. Contact between conductor and busbar via contact block. |             |               |          |
|---------------------------------------|--|-------------|---------------|----------|
| Rated voltage:                        | 690 V  |             |               |          |
| For busbars:                          | 20, 25, 30 × 5, 10   |             |               |          |
| Approvals:                            | UL, GL, DNV-GL   |             |               |          |
| Connection min-max                    | End feed   | Center feed | Pack quantity | Item no. |
| lam.Cu from 3 × 20 × 1 to 10 × 24 × 1 | 630 A  | 750 A       | 6 pcs.        | 01319    |
| lam.Cu from 3 × 20 × 1 to 10 × 32 × 1 | 630 A  | 800 A       | 3 pcs.        | 01759    |



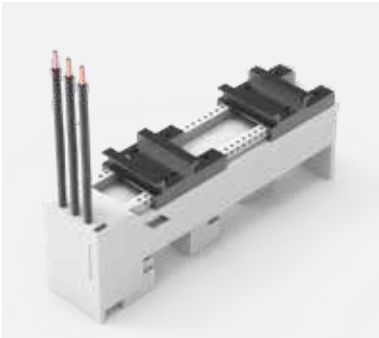
### Cover cap

| Description:   | Cover cap, 3-pole. May also be used as a reserve section cover. |               |          |
|----------------|---|---------------|----------|
| Approvals:     | CSA, UL, GL, DNV-GL   |               |          |
| Dimensions     | For busbar  | Pack quantity | Item no. |
| 84 × 200 × 55  | 12, 15, 20, 25, 30 × 5 × 10                                     | 10 pcs.       | 01413    |
| 180 × 200 × 90 | 12, 15, 20, 25, 30 × 5 × 10                                     | 1 pc.         | 01539    |
| 250 × 200 × 90 | 12, 15, 20, 25, 30 × 5 × 10                                     | 1 pc.         | 01540    |
| 54 × 200 × 55  | 12, 15, 20, 25, 30 × 5 × 10                                     | 1 pc.         | 01590    |
| 228 × 200 × 90 | 12, 15, 20, 25, 30 × 5 × 10                                     | 1 pc.         | 01596    |
| 135 × 200 × 90 | 20, 25, 30 × 5 × 10   | 1 pc.         | 01756    |



### Busbar adapter 25A with cables

|                                |  |
|--------------------------------|--|
| Description:                   | Busbar adapter 25 A. With two adjustable mounting rails. With removable upper section and leads (4 mm²). |
| Rated voltage:                 | 690 V  |
| Rated current:                 | 25 A   |
| For busbars:                   | 12, 15, 20, 25, 30 × 5, 10   |
| Power dissipation at 80% load: | 1.7 W  |
| Poles:                         | 3-pole   |
| Dimensions:                    | 45 × 200 × 75 mm   |
| Pack quantity:                 | 1 pc.  |
| Approvals:                     | CSA, UL, GL  |
| Item no.                       |  |
| 32400                          |  |

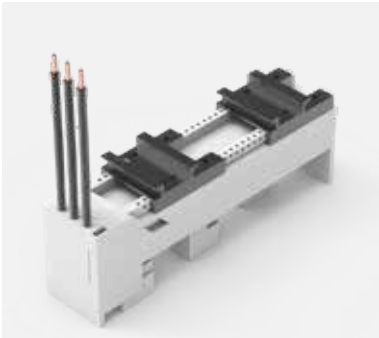


# General Accessories

## Busbar 60 mm system

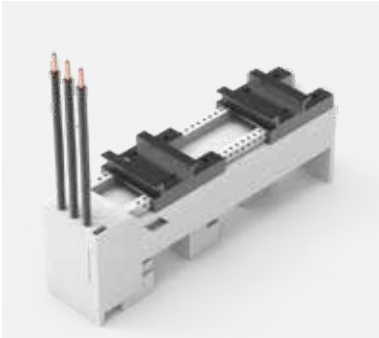
### Busbar adapter 32A, with cables and 2 mounting rails

|                                |  |
|--------------------------------|--|
| Description:                   | Busbar adapter 32 A. With two adjustable mounting rails. With removable upper section and leads (6 mm²). |
| Rated voltage:                 | 690 V  |
| Rated current:                 | 32 A   |
| For busbars:                   | 12, 15, 20, 25, 30 × 5, 10   |
| Power dissipation at 80% load: | 2.2 W  |
| Poles:                         | 3-pole   |
| Dimensions:                    | 54 × 200 × 75 mm   |
| Pack quantity:                 | 1 pc.  |
| Approvals:                     | CSA, UL, GL  |
| Item no.                       |  |
| 32404                          |  |



### Busbar adapter 45A, with cables

|                                |   |
|--------------------------------|---|
| Description:                   | Busbar adapter 45 A. With two adjustable mounting rails. With removable upper section and leads (10 mm²). |
| Rated voltage:                 | 690 V   |
| Rated current:                 | 45 A  |
| For busbars:                   | 12, 15, 20, 25, 30 × 5, 10  |
| Power dissipation at 80% load: | 3.5 W   |
| Poles:                         | 3-pole  |
| Dimensions:                    | 54 × 200 × 75 mm  |
| Pack quantity:                 | 1 pc.   |
| Approvals:                     | CSA, UL, GL   |
| Item no.                       |   |
| 32412                          |   |



### Mounting rail

| Description:   | Mounting rail for busbar adapters. |  |  |
|----------------|------------------------------------|--|--|
| Pack quantity: | 10 pcs.                            |  |  |
| Approvals:     | CSA, UL, GL                        |  |  |
| Type           | Item no.                           |  |  |
| Rail 45 mm     | 32947                              |  |  |
| Rail 54 mm     | 32948                              |  |  |
| Rail 63 mm     | 32949                              |  |  |
| Rail 72 mm     | 32950                              |  |  |
| Rail 81 mm     | 32951                              |  |  |



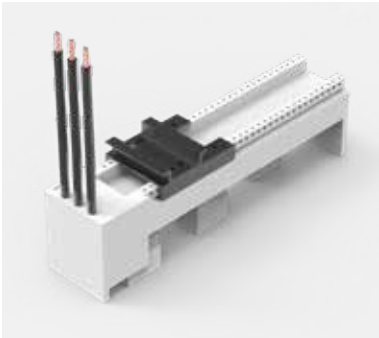


General Accessories

Busbar 60 mm system

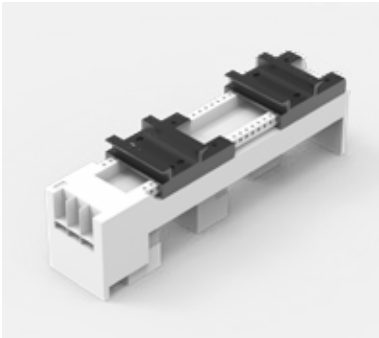
Busbar adapter 25A, with cables

|                                |   |
|--------------------------------|---|
| Description:                   | Busbar adapter 25 A. With one adjustable mounting rail. With leads (4 mm²). |
| Rated voltage:                 | 690 V   |
| Rated current:                 | 25 A  |
| For busbars:                   | 12, 15, 20, 25, 30 × 5, 10  |
| Power dissipation at 80% load: | 1.2 W   |
| Poles:                         | 3-pole  |
| Dimensions:                    | 45 × 200 × 63 mm  |
| Pack quantity:                 | 1 pc.   |
| Approvals:                     | CSA, UL, GL   |
| Item no.                       |   |
| 32430                          |   |



Busbar adapter 25A, without cables

|                                |  |
|--------------------------------|--|
| Description:                   | Busbar adapter 25 A. With two adjustable mounting rails. With screw terminals 6 mm² from the rear. |
| Rated voltage:                 | 690 V  |
| Rated current:                 | 25 A   |
| For busbars:                   | 12, 15, 20, 25, 30 × 5, 10   |
| Power dissipation at 80% load: | 1.2 W  |
| Poles:                         | 3-pole   |
| Dimensions:                    | 45 × 200 × 63 mm   |
| Pack quantity:                 | 1 pc.  |
| Approvals:                     | CSA, UL, GL  |
| Item no.                       |  |
| 32436                          |  |

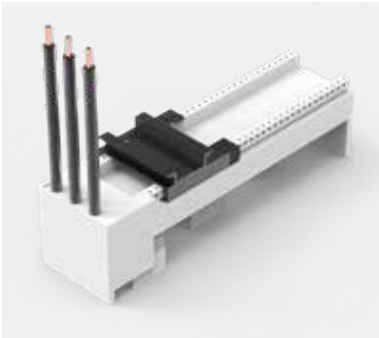


General Accessories

Busbar 60 mm system

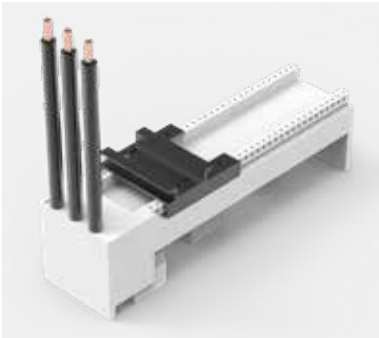
Busbar adapter 32A, with cables and 1 mounting rail

|                                |  |          |
|--------------------------------|--|----------|
| Description:                   | Busbar adapter 32 A. With adjustable mounting rails. With leads 6 mm². |          |
| Rated voltage:                 | 690 V  |          |
| Rated current:                 | 32 A   |          |
| For busbars:                   | 12, 15, 20, 25, 30 × 5, 10   |          |
| Power dissipation at 80% load: | 1.5 W  |          |
| Poles:                         | 3-pole   |          |
| Pack quantity:                 | 1 pc.  |          |
| Approvals:                     | CSA, UL, GL  |          |
| Width                          | Mounting Rails   | Item no. |
| 54                             | 1 pcs.   | 32441    |
| 63                             | 1 pcs.   | 32443    |
| 81                             | 2 pcs.   | 32446    |



Busbar adapter 63A, with cables

|                                |   |  |
|--------------------------------|---|--|
| Description:                   | Busbar adapter 63 A. With one adjustable mounting rail. With cables 10 mm². |  |
| Rated voltage:                 | 690 V   |  |
| Rated current:                 | 63 A  |  |
| For busbars:                   | 12, 15, 20, 25, 30 × 5, 10  |  |
| Power dissipation at 80% load: | 4.4 W   |  |
| Poles:                         | 3-pole  |  |
| Pack quantity:                 | 1 pc.   |  |
| Approvals:                     | CSA, UL, GL   |  |
| Width                          | Item no.  |  |
| 54                             | 32454   |  |
| 63                             | 32456   |  |
| 72                             | 32457   |  |



General Accessories

Busbar 60 mm system

Busbar adapter 80A, without cables

|                                       |   |
|---------------------------------------|---|
| <b>Description:</b>                   | Busbar adapter 80 A. With one adjustable mounting rail. With terminals 16 mm <sup>2</sup> , operated from the back. |
| <b>Rated voltage:</b>                 | 690 V   |
| <b>Rated current:</b>                 | 80 A  |
| <b>For busbars:</b>                   | 12, 15, 20, 25, 30 × 5, 10  |
| <b>Power dissipation at 80% load:</b> | 6 W   |
| <b>Poles:</b>                         | 3-pole  |
| <b>Pack quantity:</b>                 | 1 pc.   |
| <b>Approvals:</b>                     | CSA, UL, GL   |
|                                       |   |
| <b>Width</b>                          | <b>Item no.</b>   |
| 54                                    | 32466   |
| 72                                    | 32469   |



Busbar adapter 32A, without cables

|                                |  |          |
|--------------------------------|--|----------|
| Description:                   | Busbar adapter 32 A. With one adjustable mounting rail. Without cables, with spring terminals 1.5 - 6 mm². |          |
| Rated voltage:                 | 690 V  |          |
| Rated current:                 | 32 A   |          |
| For busbars:                   | 12, 15, 20, 25, 30 × 5, 10   |          |
| Power dissipation at 80% load: | 1.6 W  |          |
| Poles:                         | 3-pole   |          |
| Pack quantity:                 | 1 pcs.   |          |
| <hr/>                          |  |          |
|                                | Width  | Item no. |
|                                | 45   | 32486    |



General Accessories

Busbar 60 mm system

Busbar adapter 80A, without cables with spring terminals

|                                |   |
|--------------------------------|---|
| Description:                   | Busbar adapter 80 A. With one adjustable mounting rail. Without cables, with spring terminals 1.5 - 16 mm². |
| Rated voltage:                 | 690 V   |
| Rated current:                 | 80 A  |
| For busbars:                   | 12, 15, 20, 25, 30 × 5, 10  |
| Power dissipation at 80% load: | 6 W   |
| Poles:                         | 3-pole  |
| Pack quantity:                 | 1 pc.   |
|                                |   |
| Width                          | Item no.  |
| 45                             | 32486   |



Side mounted module

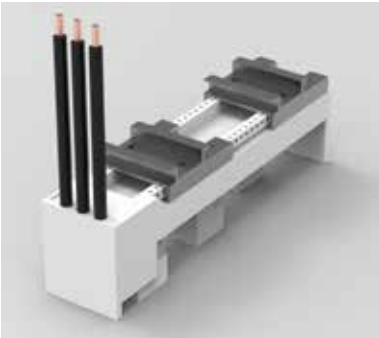
|                |   |
|----------------|---|
| Description:   | Side-mounted module for busbar adapters, attachable to either side. |
| Dimensions:    | 9 x 200 x 63 mm   |
| Pack quantity: | 10 pcs.   |
| Approvals:     | GL  |
|                |   |
| Item no.       |   |
| 32963          |   |



Busbar adapter, 32A with cables

|                                       |  |
|---------------------------------------|--|
| <b>Description:</b>                   | Busbar adapter, 32 A. With cables 6 mm². Adapted to the breaker manufacturer's design. |
| <b>Rated voltage:</b>                 | 690 V  |
| <b>Rated current:</b>                 | 32 A   |
| <b>For busbars:</b>                   | 12, 15, 20, 25, 30 × 5, 10   |
| <b>Power dissipation at 80% load:</b> | 1,6 W  |
| <b>Width:</b>                         | 45 mm  |
| <b>Pack quantity:</b>                 | 1 pc.  |
| <b>Approvals:</b>                     | GL   |

| Type  | Item no. |
|---|----------|
| For direct starter Schneider Electric LUB12/32      | 32427    |
| For direct starter Schneider Electric GV2-M/P       | 32434    |
| For direct starter ABB MS116/132                    | 32498    |
| For direct starter Siemens S0 with screw connection | 32639    |



General Accessories

Busbar 60 mm system

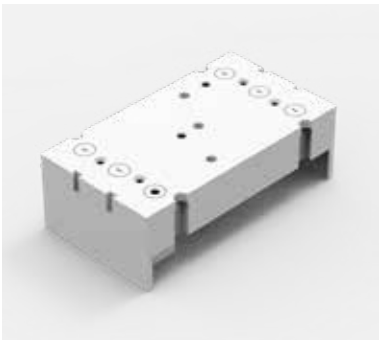
Busbar adapter 160A

| Description:                   | 3-pole busbar adapter 160 A, adapted to the component manufacturer's design.                  |               |          |
|--------------------------------|---|---------------|----------|
| Rated voltage:                 | 690 V   |               |          |
| For busbars:                   | 12, 15, 20, 25, 30 × 5, 10  |               |          |
| Power dissipation at 80% load: | 7.7 W   |               |          |
| Pack quantity:                 | 1 pc.   |               |          |
| Width                          | Type  | Rated current | Item no. |
| 90                             | For ABB T-max T1, XT1,T2,XT2,GE FD160, Schneider el.NS80, NSX80, top connection to the system | 160 A         | 32575    |
| 76                             | For Siemens 3VA10,11 and 3VT160, top connection to the system                                 | 144 A         | 32660    |



Busbar adapter 250A

| Description:                              | 3-pole busbar adapter 250 A, adapted to the component manufacturer's design. |  |  |
|---|--|--|--|
| Rated voltage:                            | 690 V  |  |  |
| Rated current:                            | 250 A  |  |  |
| For busbars:                              | 12, 15, 20, 25, 30 × 5, 10   |  |  |
| Power dissipation at 80% load:            | 26.1 W (32023), 10 W (32156)   |  |  |
| Width:                                    | 105 mm   |  |  |
| Height:                                   | 190 mm   |  |  |
| Pack quantity:                            | 1 pc.  |  |  |
| Approvals:                                | CSA,UL,GL  |  |  |
| Type                                      | Item no.   |  |  |
| For ABB T - max XT4                       | 32023  |  |  |
| For Schneider Electric NSX100-NSX250, GV7 | 32156  |  |  |



General Accessories

Busbar 60 mm system

Universal busbar adapter, 200-250A

| Description:                   | 3-pole universal busbar adapter 200 - 250 A, with movable fastening rails with M4 slide nuts for safe mounting of the switching devices. |                              |               |          |
|--------------------------------|--|------------------------------|---------------|----------|
| Rated voltage:                 | 690 V  |                              |               |          |
| For busbars:                   | 12, 15, 20, 25, 30 × 5, 10   |                              |               |          |
| Power dissipation at 80% load: | 10.6 W (32214), 22.2 W (32168)   |                              |               |          |
| Pack quantity:                 | 1 pc.  |                              |               |          |
| Approvals:                     | CSA,UL,GL DNV GL   |                              |               |          |
| Height                         | Width  | Connection                   | Rated current | Item no. |
| 320                            | 110  | Terminals 35 - 120 mm at top | 250 A         | 32168    |
| 222                            | 108  | Terminals 70 mm² at top      | 200 A         | 32214    |



NH fuse-switch disconnecter

| Description:   | 3-pole NH bus-mounting fuse with disconnecter, size 000 to 3, connection at top and bottom. |              |        |               |          |
|----------------|---|--------------|--------|---------------|----------|
| Rated voltage: | 690 V   |              |        |               |          |
| For busbars:   | 12, 15, 20, 25, 30 × 5, 10*   |              |        |               |          |
| Pack quantity: | 1 pc.   |              |        |               |          |
| Approvals:     | IEC, GL, VDE, DNV GL  |              |        |               |          |
| Height         | Width   | Connection   | Size   | Rated current | Item no. |
| 200            | 106   | box terminal | NH 00  | 160 A         | 33198    |
| 200            | 89  | box terminal | NH 000 | 125 A         | 33216    |
| 200            | 106   | Screw M8     | NH 00  | 160 A         | 33398    |
| 243            | 184   | Screw M10    | NH 1   | 250 A         | 33601    |
| 288            | 210   | Screw M10    | NH 2   | 400 A         | 33602    |
| 300            | 256   | Screw M12    | NH 3   | 630 A         | 33603    |

\*For size 2, a conversion kit, 33148, is required for mounting on 5mm busbars. Size 3 is not suitable for 5mm busbars.



# General Accessories

## Busbar 60 mm system

### NH switch disconnecter with fuses

| Description:                   | 3-pole NH switch disconnecter with fuses. With multifunction handle (snap action switch mechanism). Connection at the bottom. |              |       |               |          |
|--------------------------------|---|--------------|-------|---------------|----------|
| Rated voltage:                 | 690 V   |              |       |               |          |
| For busbars:                   | 12, 15, 20, 25, 30 × 5, 10  |              |       |               |          |
| Power dissipation at 80% load: | 18.6 W(33500), 52.5 W (33510)   |              |       |               |          |
| Pack quantity:                 | 1 pc.   |              |       |               |          |
| Approvals:                     | IEC, VDE, DNV GL  |              |       |               |          |
| Height                         | Width   | Connection   | Size  | Rated current | Item no. |
| 200                            | 106   | box terminal | NH 00 | 125 A         | 33500    |
| 286                            | 184   | Screw M10    | 1     | 250 A         | 33510    |



### Switch disconnecter

| Description:                   | 3-pole switch disconnecter. With multifunction handle (snap action switch mechanism). Connection at the bottom. |              |               |          |  |
|--------------------------------|---|--------------|---------------|----------|--|
| Rated voltage:                 | 690 V   |              |               |          |  |
| For busbars:                   | 12, 15, 20, 25, 30 × 5, 10  |              |               |          |  |
| Power dissipation at 80% load: | 26,7 W  |              |               |          |  |
| Pack quantity:                 | 1 pc.   |              |               |          |  |
| Approvals:                     | IEC, VDE, DNV GL  |              |               |          |  |
| Height                         | Width   | Connection   | Rated current | Item no. |  |
| 200                            | 106   | box terminal | 160 A         | 33540    |  |

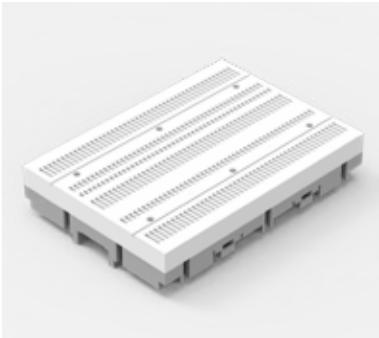


# General Accessories

## Busbar CrossBoard

### CrossBoard mounting platform

| Description:                   | 3-pole modular power distribution system, with touch safe protection. Mounting platform for all CrossBoard components. |          |
|--------------------------------|--|----------|
| Rated voltage:                 | 690 V.   |          |
| Rated current:                 | 125 A.   |          |
| Power dissipation at 80% load: | 3.4 W (11225), 6 W (11405).  |          |
| Pack quantity:                 | 1 pc.  |          |
| Approvals:                     | IEC, UL.   |          |
| Height                         | Width  | Item no. |
| 160                            | 225  | 11225    |
| 160                            | 405  | 11405    |



### CrossBoard connection module

|                                |   |
|--------------------------------|---|
| Description:                   | Connection module 16 mm², 3-pole with integrated spring terminals 1.5 - 16 mm². Cover cap included. |
| Rated voltage:                 | 690 V   |
| Rated current:                 | 63 A  |
| Power dissipation at 80% load: | 2.9 W   |
| Dimensions:                    | 22.5 × 160 × 115 mm   |
| Pack quantity:                 | 1 pc.   |
| Approvals:                     | IEC,UL  |
|                                |   |
| Item no.                       |   |
| 01592                          |   |





General Accessories

Busbar CrossBoard

CrossBoard Adapter Slim

|                                |   |
|--------------------------------|---|
| Description:                   | 3 pole adapter, 16 A. One fixed mounting rail, with fuse-carrier 10 x 38 / Class CC. With cables 2.5 mm². |
| Rated voltage:                 | 690 V   |
| Rated current:                 | 16 A  |
| Power dissipation at 80% load: | 2.6 W   |
| Dimensions:                    | 22.5 x 160 x 85 mm  |
| Pack quantity:                 | 1 pc.   |
| Approvals:                     | IEC,UL  |
| Item no.                       |   |
| 36009                          |   |



CrossBoard Adapter Basic

**Description:** 3 pole adapter. One fixed mounting rail. For compact mounting of complete motor circuits.

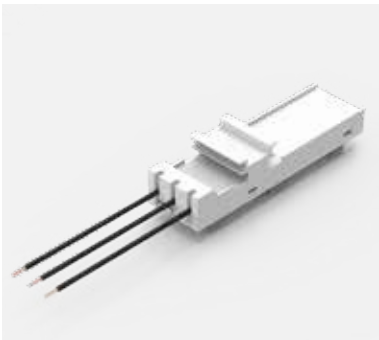
**Rated voltage:** 690 V

**Dimensions:** 45 × 160 × 45 mm

**Pack quantity:** 1 pc.

**Approvals:** IEC, UL

| Cable diameter (mm) | Rated current | Item no. |
|---------------------|---------------|----------|
| 2.5 mm²             | 16 A          | 32666    |
| 6 mm²               | 32 A          | 32682    |



General Accessories

Busbar CrossBoard

CrossBoard Adapter Comfort

**Description:** 3 pole adapter. One fixed mounting rail. For compact mounting of complete motor circuits Adapters are equipped with cables.

**Rated voltage:** 690 V

**Dimensions:** 45 × 160 × 45 mm

**Pack quantity:** 1 pc.

**Approvals:** IEC,UL

| Cable diameter (mm) | Rated current | Item no. |
|---------------------|---------------|----------|
| 2.5 mm <sup>2</sup> | 16 A          | 32668    |
| 2.5 mm <sup>2</sup> | 25 A          | 32676    |
| 6 mm <sup>2</sup>   | 32 A          | 32684    |
| 10 mm <sup>2</sup>  | 45 A          | 32692    |

For more bus-bar products please contact your nVent HOFFMAN sales representative.

