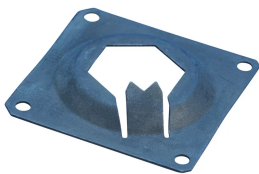


# HFF Steel Nailing Plate, 10 mm, 12 mm, #3, #4, 10M

## CATALOG NUMBER

**EL1012HFF**



The HFF nailing plate is sold separately from the A12 couplers. The plates easily attach to the couplers by orienting the hexagon opening in the plate to the coupler and then rotating the plate 15 degrees.

Used in segmental pour and closure pour applications. Permanent form saving plates allow easy attachment to form work, eliminating costly damage to the forms.

## FEATURES

- Designed for use with the A12 coupler families
- Positively locks onto the hexagon-shaped coupler
- Easy to install
- No special tools required

## PRODUCT ATTRIBUTES

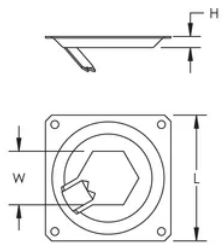
- Article Number: 152840
- Material: Spring Steel
- Rebar Size, Metric: 10 mm; 12 mm
- Rebar Size, US: #3;#4
- Rebar Size, Canada: 10M
- Length (L): 50mm
- Hex Width (W): 17 mm
- Height (H): 5 mm
- Package Quantity: 100

ADDITIONAL PRODUCT DETAILS

Can also be used on A2N couplers.

Always wear gloves when installing plates to couplers.

DIAGRAMS



WARNING

nVent products shall be installed and used only as indicated in nVent's product instruction sheets and training materials. Instruction sheets are available at [www.nvent.com](http://www.nvent.com) and from your nVent customer service representative. Improper installation, misuse, misapplication or other failure to completely follow nVent's instructions and warnings may cause product malfunction, property damage, serious bodily injury and death and/or void your warranty.

North America

+1.800.753.9221  
Option 1 – Customer Care  
Option 2 – Technical  
Support

Europe

Netherlands:  
+31 800-0200135  
France:  
+33 800 901 793

Europe

Germany:  
800 1890272  
Other Countries:  
+31 13 5835404

APAC

Shanghai:  
+ 86 21 2412 1618/19  
Sydney:  
+61 2 9751 8500



Our powerful portfolio of brands:

CADDY   ERICO   HOFFMAN   ILSCO   SCHROFF   TRACHTE