

# CPP Tapered Plastic Screw-In Plug for A12, A22 and A32K



## FEATURES

Designed for use with the A12, A22 and A32K coupler families

Designed to keep dirt, water and concrete slurry out of the coupler during the concrete pour

Color coded for the appropriate coupler size

## SPECIFICATIONS

**Material:** High Density Polyethylene (HDPE)

Table 1/2

Catalog Number	Article Number	Rebar Size, Metric	Rebar Size, US	Rebar Size, Canada	Diameter (Ø)	Height (H)
EL10CPPB100	153060	10 mm	#3		17 mm	13 mm
EL12CPPB100	153070	12 mm	#4	10M	17 mm	13 mm
EL14CPPB100	153080	14 mm			22 mm	13 mm
EL16CPPB100	153090	16 mm	#5	15M	22 mm	13 mm
EL18CPPB100	153100	18 mm			27 mm	13 mm

CatalogNumber	Article Number	Rebar Size, Metric	Rebar Size, US	Rebar Size, Canada	Diameter (Ø)	Height (H)
EL20CPPB100	153110	20 mm	#6	20M	27 mm	13 mm
EL22CPPB100	153120	22 mm	#7		33 mm	16 mm
EL25CPPB100	153130	25 mm	#8	25M	33 mm	16 mm
EL28CPPB100	153140	28 mm	#9	30M	37 mm	16 mm
EL30CPPB100	153150	30 mm			37 mm	16 mm
EL32CPPB100	153160	32 mm	#10		42 mm	16 mm
EL36CPPB50	153180	36 mm	#11	35M	46 mm	16 mm
EL40CPPB50	153200	40 mm			52 mm	16 mm
EL50CPPB40	153220	50 mm			64 mm	16 mm

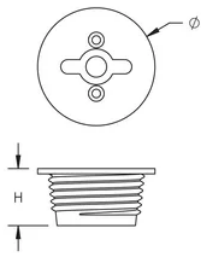
Table 2/2

Catalog Number	Article Number	Color
EL10CPPB100	153060	Yellow
EL12CPPB100	153070	Red
EL14CPPB100	153080	Green
EL16CPPB100	153090	Black
EL18CPPB100	153100	White
EL20CPPB100	153110	Yellow
EL22CPPB100	153120	Blue
EL25CPPB100	153130	Red

Catalog Number	Article Number	Color
EL28CPPB100	153140	Black
EL30CPPB100	153150	White
EL32CPPB100	153160	Yellow
EL36CPPB50	153180	Blue
EL40CPPB50	153200	Green
EL50CPPB40	153220	Black

## DIAGRAMS

---



## WARNING

---

nVent products shall be installed and used only as indicated in nVent's product instruction sheets and training materials. Instruction sheets are available at [www.nvent.com](http://www.nvent.com) and from your nVent customer service representative. Improper installation, misuse, misapplication or other failure to completely follow nVent's instructions and warnings may cause product malfunction, property damage, serious bodily injury and death and/or void your warranty.

**North America**

+1.800.753.9221

Option 1 – Customer Care

Option 2 – Technical

Support

**Europe**

Netherlands:

+31 800-0200135

France:

+33 800 901 793

**Europe**

Germany:

800 1890272

Other Countries:

+31 13 5835404

**APAC**

Shanghai:

+ 86 21 2412 1618/19

Sydney:

+61 2 9751 8500



Our powerful portfolio of brands:

**CADDY**

**ERICO**

**HOFFMAN**

**ILSCO**

**SCHROFF**

**TRACHTE**