

# Early Streamer Emission Terminal Mast Adaptor



## FEATURES

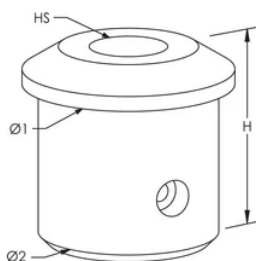
Mounts nVent ERICO System 1000 Interceptor into the fiberglass mast

## SPECIFICATIONS

Table 1/1

Catalog Number	Material	Hole Size (HS)	Diameter 1 (Ø1)	Diameter 2 (Ø2)	Height (H)	Unit Weight
INTCPTADBUT TSII	High Density Polyethylene (HDPE)	30 mm	70.1 mm	59.5 mm	65.5 mm	0.13 kg

## DIAGRAMS



## WARNING

nVent products shall be installed and used only as indicated in nVent's product instruction sheets and training materials. Instruction sheets are available at [www.nvent.com](http://www.nvent.com) and from your nVent customer service representative. Improper installation, misuse, misapplication or other failure to completely follow nVent's instructions and warnings may cause

product malfunction, property damage, serious bodily injury and death and/or void your warranty.

**North America**

+1.800.753.9221

Option 1 – Customer Care

Option 2 – Technical

Support

**Europe**

Netherlands:

+31 800-0200135

France:

+33 800 901 793

**Europe**

Germany:

800 1890272

Other Countries:

+31 13 5835404

**APAC**

Shanghai:

+ 86 21 2412 1618/19

Sydney:

+61 2 9751 8500



Our powerful portfolio of brands:

**CADDY**

**ERICO**

**HOFFMAN**

**ILSCO**

**SCHROFF**

**TRACHTE**