

nVent CADDY Speed Link SLK with Hook



CERTIFICATIONS



FEATURES

Complete system includes wire, locking device and pre-assembled hook end fitting

Hooks to a wide range of nVent CADDY fasteners

Fastens to the building structure or hanging services by looping around and hooking to wire rope

Easy to remove for applications requiring maintenance

Spring latch helps provide secure connection

Insert cable through hole and use bottom side of hook as an end stop

Also available in Y-hook configuration

SPECIFICATIONS

Static Load Safety Factor:	5:1
Finish:	Electrogalvanized
Material:	Steel;Polypropylene;Zinc Alloy
Complies With:	SMACNA HVAC-DCS

Table 1/3

Catalog Number	Article Number	Wire Rope Diameter	Wire Rope Length	A	B	C
----------------	----------------	--------------------	------------------	---	---	---

SLK15L1	196508	1.5 mm	1m	48 mm	18 mm	4.5 mm
SLK15L10	196513	1.5 mm	10m	48 mm	18 mm	4.5 mm
SLK15L2	196509	1.5 mm	2m	48 mm	18 mm	4.5 mm
SLK15L2R2	196614	1.5 mm	2m	48 mm	18 mm	4.5 mm
SLK15L3	196510	1.5 mm	3m	48 mm	18 mm	4.5 mm
SLK15L3R2	196615	1.5 mm	3m	48 mm	18 mm	4.5 mm
SLK15L5	196511	1.5 mm	5m	48 mm	18 mm	4.5 mm
SLK2L1	196537	2 mm	1m	57 mm	22 mm	5.5 mm
SLK2L10	196542	2 mm	10m	57 mm	22 mm	5.5 mm
SLK2L2	196538	2 mm	2m	57 mm	22 mm	5.5 mm
SLK2L2R2	196619	2 mm	2m	57 mm	22 mm	5.5 mm
SLK2L3	196539	2 mm	3m	57 mm	22 mm	5.5 mm
SLK2L3R2	196620	2 mm	3m	57 mm	22 mm	5.5 mm
SLK2L5	196540	2 mm	5m	57 mm	22 mm	5.5 mm
SLK3L1	196700	3 mm	1m	57.6 mm	23.2 mm	6.1 mm
SLK3L10	196705	3 mm	10m	57.6 mm	23.2 mm	6.1 mm
SLK3L2	196701	3 mm	2m	57.6 mm	23.2 mm	6.1 mm
SLK3L3	196702	3 mm	3m	57.6 mm	23.2 mm	6.1 mm
SLK3L3R2	196625	3 mm	3m	57.6 mm	23.2 mm	6.1 mm

SLK3L5	196703	3 mm	5m	57.6 mm	23.2 mm	6.1 mm
SLK3L5R2	196626	3 mm	5m	57.6 mm	23.2 mm	6.1 mm

Table 2/3						
Catalog Number	Article Number	Height (H)	Width (W)	Thickness (T)	Angle (a)	Static Load
SLK15L1	196508	55 mm	19 mm	12.5 mm	90 ° Max	195N
SLK15L10	196513	55 mm	19 mm	12.5 mm	90 ° Max	195N
SLK15L2	196509	55 mm	19 mm	12.5 mm	90 ° Max	195N
SLK15L2R2	196614	55 mm	19 mm	12.5 mm	90 ° Max	195N
SLK15L3	196510	55 mm	19 mm	12.5 mm	90 ° Max	195N
SLK15L3R2	196615	55 mm	19 mm	12.5 mm	90 ° Max	195N
SLK15L5	196511	55 mm	19 mm	12.5 mm	90 ° Max	195N
SLK2L1	196537	55 mm	19 mm	12.5 mm	90 ° Max	440N
SLK2L10	196542	55 mm	19 mm	12.5 mm	90 ° Max	440N
SLK2L2	196538	55 mm	19 mm	12.5 mm	90 ° Max	440N
SLK2L2R2	196619	55 mm	19 mm	12.5 mm	90 ° Max	440N
SLK2L3	196539	55 mm	19 mm	12.5 mm	90 ° Max	440N
SLK2L3R2	196620	55 mm	19 mm	12.5 mm	90 ° Max	440N
SLK2L5	196540	55 mm	19 mm	12.5 mm	90 ° Max	440N
SLK3L1	196700	62 mm	24 mm	16 mm	90 ° Max	890N

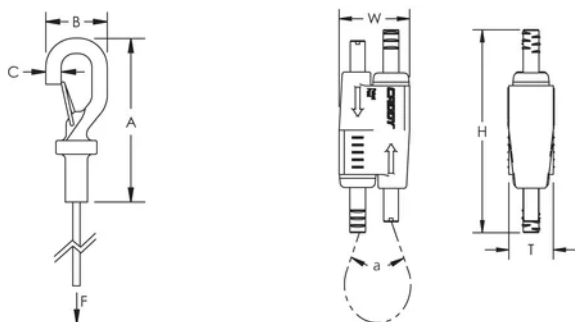
CatalogNumber	Article Number	Height (H)	Width (W)	Thickness (T)	Angle (a)	Static Load
SLK3L10	196705	62 mm	24 mm	16 mm	90 ° Max	890N
SLK3L2	196701	62 mm	24 mm	16 mm	90 ° Max	890N
SLK3L3	196702	62 mm	24 mm	16 mm	90 ° Max	890N
SLK3L3R2	196625	62 mm	24 mm	16 mm	90 ° Max	890N
SLK3L5	196703	62 mm	24 mm	16 mm	90 ° Max	890N
SLK3L5R2	196626	62 mm	24 mm	16 mm	90 ° Max	890N

Table 3/3

Catalog Number	Article Number	Certifications
SLK15L1	196508	UL, cUL, SMACNA
SLK15L10	196513	SMACNA, UL, cUL
SLK15L2	196509	SMACNA, UL, cUL
SLK15L2R2	196614	SMACNA, UL, cUL
SLK15L3	196510	UL, cUL, SMACNA
SLK15L3R2	196615	UL, cUL, SMACNA
SLK15L5	196511	SMACNA, UL, cUL
SLK2L1	196537	SMACNA, UL, cUL
SLK2L10	196542	SMACNA, UL, cUL
SLK2L2	196538	UL, cUL, SMACNA
SLK2L2R2	196619	UL, cUL, SMACNA

Catalog Number	Article Number	Certifications
SLK2L3	196539	SMACNA, UL, cUL
SLK2L3R2	196620	SMACNA, UL, cUL
SLK2L5	196540	UL, cUL, SMACNA
SLK3L1	196700	SMACNA
SLK3L10	196705	SMACNA
SLK3L2	196701	SMACNA
SLK3L3	196702	SMACNA
SLK3L3R2	196625	SMACNA
SLK3L5	196703	SMACNA
SLK3L5R2	196626	SMACNA

DIAGRAMS



WARNING

nVent products shall be installed and used only as indicated in nVent's product instruction sheets and training materials. Instruction sheets are available at www.nvent.com and from your nVent customer service representative. Improper installation, misuse, misapplication or other failure to completely follow nVent's instructions and warnings may cause product malfunction, property damage, serious bodily injury and death and/or void your warranty.

North America

+1.800.753.9221

Option 1 – Customer Care

Option 2 – Technical

Support

Europe

Netherlands:

+31 800-0200135

France:

+33 800 901 793

Europe

Germany:

800 1890272

Other Countries:

+31 13 5835404

APAC

Shanghai:

+ 86 21 2412 1618/19

Sydney:

+61 2 9751 8500



Our powerful portfolio of brands:

CADDY

ERICO

HOFFMAN

ILSCO

SCHROFF

TRACHTE

