

2 Hole Telecom Lug



FEATURES

Provides an efficient bolting surface for grounding and power applications

Electrolytic grade copper

Hole spacing for telecom ground bars

For use with nVent ERICO Cadweld mold GLPCC001TC only

SPECIFICATIONS

Material: Copper

Finish: Tinned

Table 1/2

Catalog Number	Height (H)	Length (L)	Width (W)	Thickness (T)	A	B
B922CC14A	7.93 mm	47.63mm	15.88 mm	3.18 mm	9.5 mm	15.88 mm
B922CC14B	7.93 mm	47.63mm	15.88 mm	3.18 mm	9.5 mm	19.05 mm
B922CC14C	7.93 mm	47.63mm	15.88 mm	3.18 mm	9.5 mm	25.4 mm
B922CC38B	7.93 mm	47.63mm	15.88 mm	3.18 mm	9.5 mm	19.05 mm
B922CC38C	7.93 mm	47.63mm	15.88 mm	3.18 mm	9.5 mm	25.4 mm

CatalogNumber	Height (H)	Length (L)	Width (W)	Thickness (T)	A	B
B922CE716B	11.18 mm	47.63mm	25.4 mm	3.18 mm	15.9 mm	19.05 mm

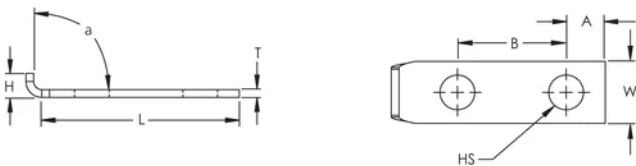
Table 2/2

Catalog Number	Hole Size (HS)	Angle (a)	Equivalent Conductor Size
B922CC14A	7.14 mm	90 °	50.39mm ²
B922CC14B	7.14 mm	90 °	50.39mm ²
B922CC14C	7.14 mm	90 °	50.39mm ²
B922CC38B	7.14 mm	90 °	50.39mm ²
B922CC38C	7.14 mm	90 °	50.39mm ²
B922CE716B	7.14 mm	90 °	80.63mm ²

ADDITIONAL PRODUCT DETAILS

For sizes not listed, contact us.

DIAGRAMS



WARNING

nVent products shall be installed and used only as indicated in nVent's product instruction sheets and training materials. Instruction sheets are available at www.nvent.com and from your nVent customer service representative. Improper installation, misuse, misapplication or other failure to completely follow nVent's instructions and warnings may cause product malfunction, property damage, serious bodily injury and death and/or void your warranty.

North America

+1.800.753.9221

Option 1 – Customer Care

Option 2 – Technical

Support

Europe

Netherlands:

+31 800-0200135

France:

+33 800 901 793

Europe

Germany:

800 1890272

Other Countries:

+31 13 5835404

APAC

Shanghai:

+ 86 21 2412 1618/19

Sydney:

+61 2 9751 8500



Our powerful portfolio of brands:

CADDY

ERICO

HOFFMAN

ILSCO

SCHROFF

TRACHTE